

2 0 1 7

PRODUCT CATALOGUE

DISPENSING SYSTEMS

 Franklin Fueling Systems



CREATE EFFICIENCIES SPEED INSTALLATIONS REDUCE COSTS



Our product systems are designed to create efficiencies and user benefits beyond those of standalone products. Check out these examples of how our system solutions can help your business.

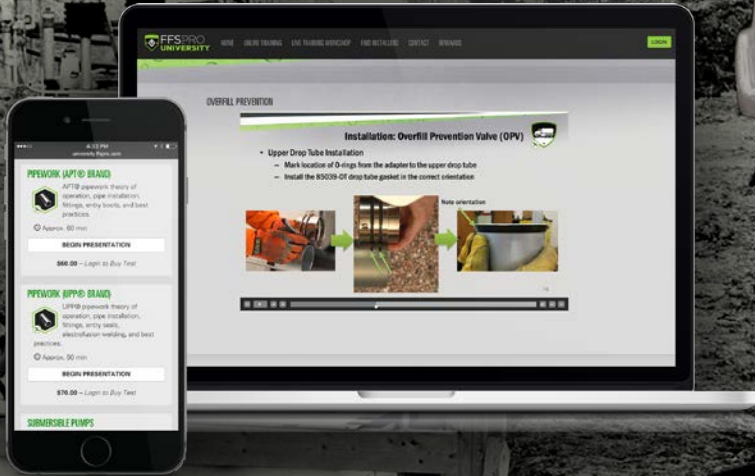
TOTAL SYSTEM
SOLUTIONS

go.franklinfueling.com/total-system-solution



Franklin Fueling Systems

TRAINED CERTIFIED READY TO WORK



Introducing the industry's premier training, certification, and resource tool for installation professionals. FFS PRO: University is your go-to source for installation safety education, best practices, and product training. It's about being safe. It's about staying educated. It's about getting the job done right.

university.ffspro.com

 Franklin Fueling Systems

WORK JUST GOT A LITTLE EASIER



It's a handy quick reference tool full of all the calculations and install tips installers need on the job site - plus plenty of pages for their own notes. What's more, it's completely FREE - no sign-up form, no strings. Just go to our Literature Order Page and we'll send them to you.

go.franklinfueling.com/forecourt-guide

 **Franklin Fueling Systems**

QUOTE LIKE A PRO



 **FFS PRO**
SITE BUILDER

Introducing the industry's most powerful quoting tool. Our new FFS PRO: Site Builder will have you quoting a complete site like a pro in no time. The intuitive user interface guides you through the process of quoting a site including a full bill of materials, pricing, and a site drawing.

About Us

Total System Solution

Dispensing Systems

Omni Series®

- Vapour Recovery Nozzles
- Vapour Recovery Hose
- Conventional Hose
- Vapour Recovery Break Away Valves
- Conventional Break Away Valves
- High Flow Break Away Valves & Sight Glasses
- Integrated Break Away Valves & Sight Glasses

Vapor Recovery

Vacuum Sources

- VP1000 Series
- VP1200 Series
- 9000 Mini-Jet
- VP500 Vane

Nozzles

- 600 Series Bootless
- 800 Series ORVR

Hoses

- Standard
- Metric and Balance Ready

Break Away Valves, Swivels, Accessories

- Break Aways
- Hose Adapters
- Retrofit Kits

Conventional

Hoses

- FLEX-ON™ Hardwall
- FLEX-ON™ Softwall
- FLEX-ON™ Marina
- FLEX-COLD Cold Weather
- Hardwall Service Station Air
- Softwall Service Station Air
- Ethanol

Break Away Valves, Swivels, Accessories

- Safety-Sever™ Break Aways
- RE-STAGE™ Adapters

Utility

Nozzles

- 402 Utility

9	410 Fuel Oil	46
10	415 Bulk	47
12	490 Duel Poppet	48
13	498 Manual	49
13	495 Aircraft	50
18	Break Away Valves, Swivels, Accessories	51
19	ACCUBREAK™ Utility Break Aways	51
20	Single-Plane Utility Swivels	52
21	Accessories	53
22	System Accessories	54
23	Hose Retriever System	54
24	Hose Support	55
24	Hose Retractor	55
24	Hose Retriever	55
28	Hose Accessories and Spare Parts	56
29	Hoses and System Accessories	57
30	System Test Equipment	59
31	DEF/AdBlue®	60
31	DuraDEF™ Nozzle with Mis-Fill Spout	60
32		
33		
33		
34		
35		
35		
35		
36		
36		
36		
37		
38		
39		
40		
41		
42		
43		
43		
44		
45		
45		
45		

DuraDEF™ Nozzle	61
Hose	62
Break Away	63
Swivel Break Away	64

Contact Us **65**

ABOUT US



Welcome to Franklin Fueling Systems, the world's leading provider of complete fuelling systems.

We are comprised of the industry's most extensive lines of fuelling product solutions. With us, you can get the most comprehensive product offering from the industry's leader in total system solutions.

Franklin Fueling Systems provides unparalleled simplicity in placing one order, having one point of contact, relying on one service team and receiving one consolidated shipment.

A wide variety of products, a world class customer service experience and extensive technical background create a complete system solution where our services, features and products set us apart as the industry leader.

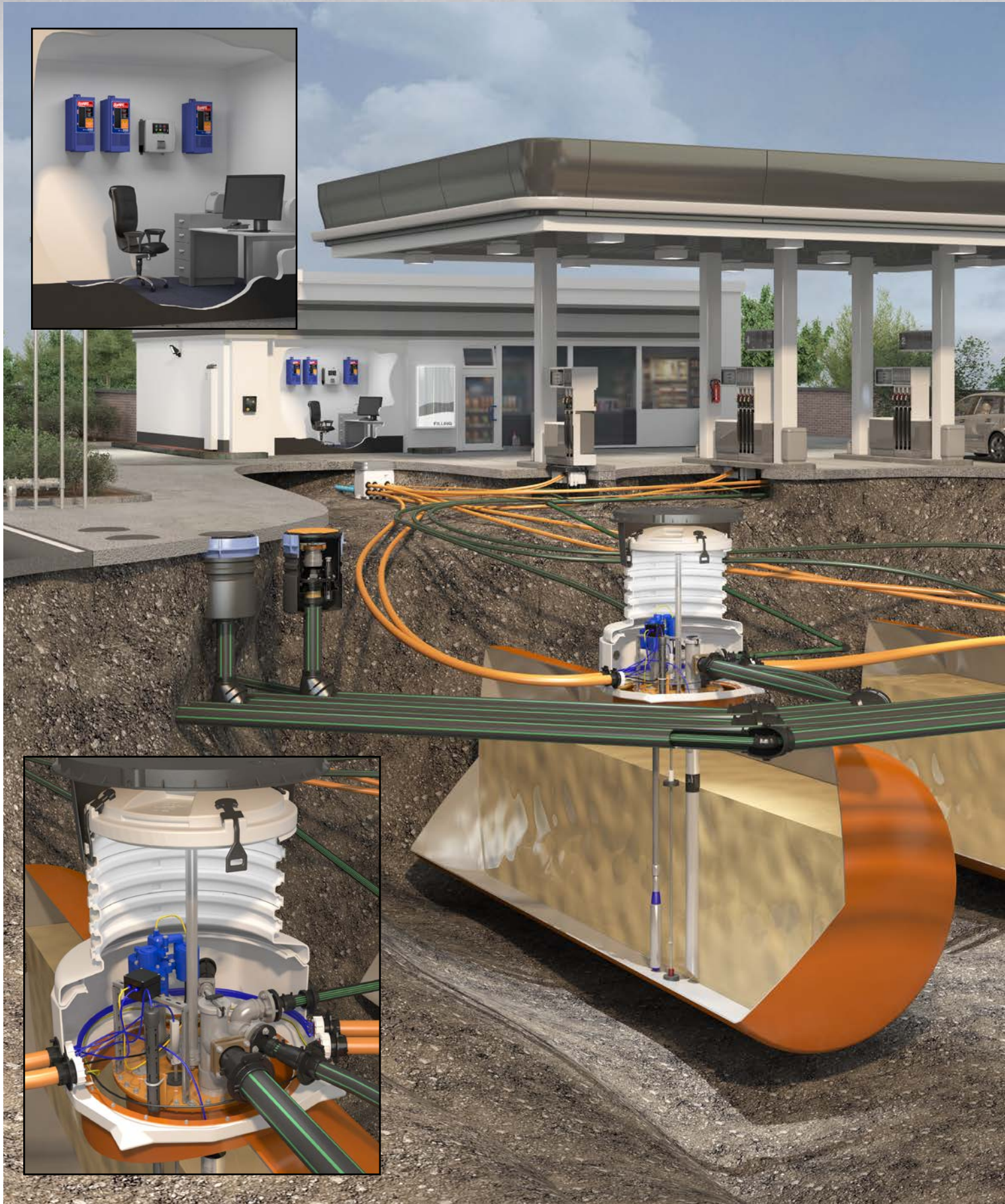
Whether you want to automate your station or network, build or re-build your station according to the latest environmental laws, update a station to fulfill new regulations or intend to realize a more cost efficient site construction and operation, you can rely on Franklin Fueling Systems. Our submersible pumping systems, service station hardware, fuel management systems and complete pipework solutions can increase your efficiency and improve your business.

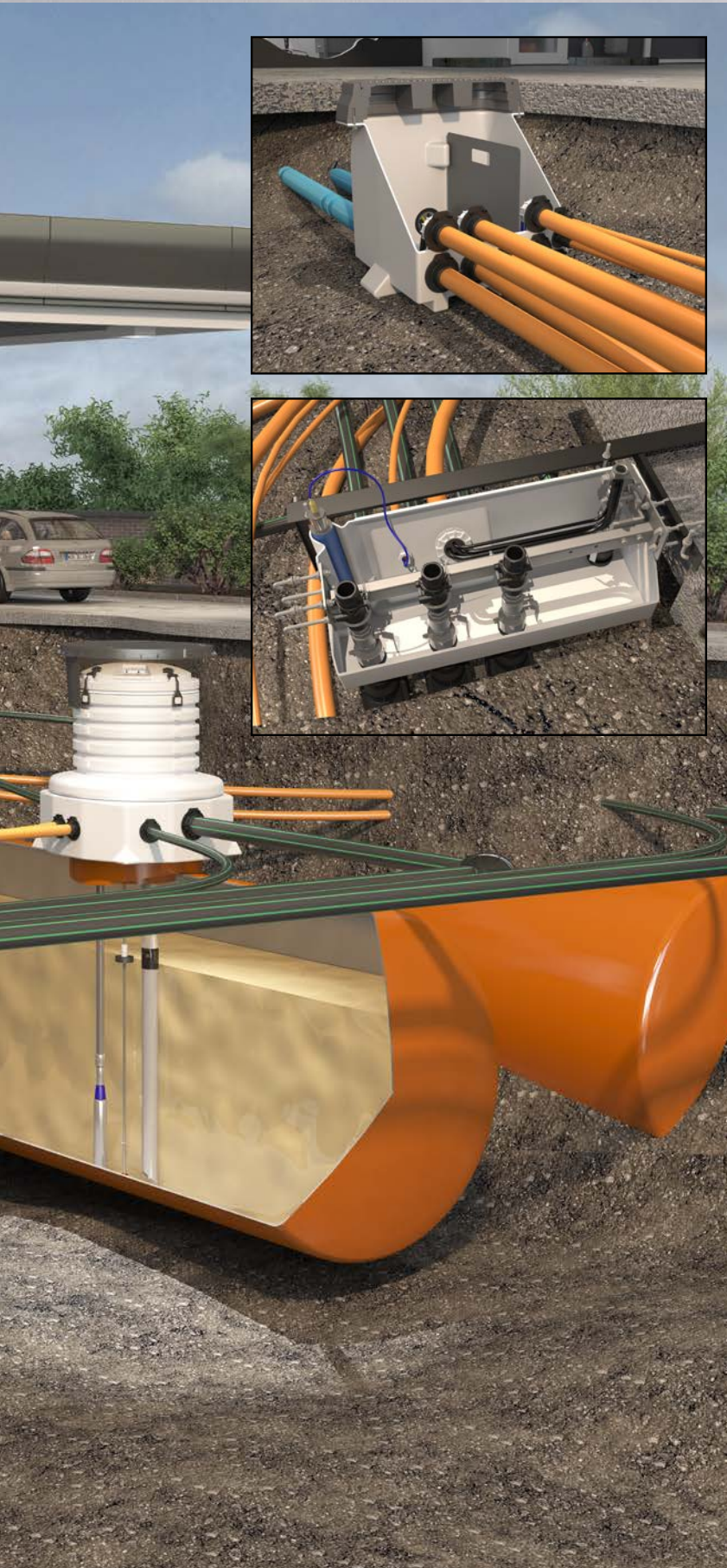
In addition to the industry's most comprehensive product offering, Franklin Fueling Systems also provides:

- One order for all equipment
- Factory tested leak-tight equipment
- Reduced site downtimes
- 100% Bio-fuel compatible options
- Effective control of your fuel stocks
- Ensured environmental protection
- Solutions to keep fuel in and water out
- Lowest total cost of ownership
- Time and money savings

Franklin Fueling Systems can deliver a complete package of pipework, manhole chambers, under dispenser containment, submersible pumps and intelligent fuel stock & environmental monitoring systems all designed around your exact needs and delivered in one shipment, ready for installation.

TOTAL SYSTEM SOLUTION





Fuel Management Systems

Franklin Fueling Systems offers a complete line of inventory monitoring systems, providing users the capability to take complete control of fuel management. The complete range is ideal for monitoring inventory, environmental control and fuel management. Next generation technology from INCON® allows users to monitor tanks from any web browser.

Submersible Pumping Systems

Franklin Fueling Systems submersible pumping systems provide faster fuel dispensing, improved efficiency and unmatched reliability. The FE Petro® brand industry-leading product design offers the highest performing submersible pumping systems available.

Piping and Containment

Franklin Fueling Systems offers the most comprehensive line of piping and containment products in the industry. The UPP® brand features innovative technology and outstanding quality. With 30 years' worth of installations and a 100% leak-free performance record, Franklin Fueling Systems is the leading provider of fuel pipe.

Dispensing Systems

Franklin Fueling Systems manufactures and markets a complete line of Stage II vapour recovery systems globally under the Healy™ product brand. Healy™ vapour recovery products suit any application and customise to any site, ensuring proper connection.

Service Station Hardware

Franklin Fueling Systems fuel station hardware products comprise a comprehensive and environmentally friendly system, including a complete biofuel approved system for E85 and biodiesel sold under the brands EBW® and Phil-Tite.

Transport Systems

Franklin Fueling Systems road tanker systems products make it easy to connect to loading terminals and underground storage tanks with our broad line of adapters, elbows and valves. Sold under the brand EBW®, these products cover both loading and off-loading applications. Our road tanker hardware products provide a wide range of connection options.

DEF/AdBlue®

Franklin Fueling Systems offers a complete system of Diesel Exhaust Fluid (DEF) or AdBlue® compatible products all from a single manufacturer. Our system is designed together – to work together, resulting in unmatched system performance and an energy efficient means of keeping DEF from freezing at low temperatures.

DISPENSING SYSTEMS

As the industry's leading Stage II vapour recovery system, the HEALY™ and Omni Series® brand Dispensing Systems offers a diversified product line providing reliable, efficient and user-friendly vapour recovery equipment for a global market.



Highlights



Performance & Protection

Dispensing System products are designed to provide maximum performance while providing long service life and safe consumer operation.



System Solutions

Get each vapour recovery system component from a single manufacturer that is known throughout the world for providing quality products.



Technology Leader

As the leading provider and innovator of vacuum-assist vapour recovery technology, we are constantly enhancing the fuelling experience with products like the Omni Series®; the next vapour recovery solution for a truly global market.



VAPOUR RECOVERY NOZZLES

Omni Series® vapour recovery nozzles are available in both ON/OFF vapour path (for multi-nozzle dispensers) and open vapour path (for single nozzle dispensers) model options. Serviceability of the nozzle is made easy with the modular two-cartridge system which allows all internal-wear components of the nozzle to be quickly and easily removed from the nozzle for servicing. Standard features including no pressure-no flow, over-horizontal automatic shutoff, and full-tank shutoff ensure safe user operation as well as facilitate easy nozzle testing and servicing. Compatible with most European-style dispensers, hanging hardware and vapour recovery vacuum sources, Omni Series® vapour recovery nozzles are easily interchangeable with most existing installations.

Highlights

A Radical Shift in Nozzle Design

What really sets the Omni Series® nozzle apart is a revolutionary new modular interior design that makes servicing them faster and easier than ever. Meaning your nozzles spend less time being serviced and more time in service.

- As the single-most-handled piece of petrol station equipment, the nozzle is constantly under attack from the harsh wear and tear that users put on them, making frequent repair and service an unfortunate reality.
- The new modular design features a pre-assembled cartridge containing all inner components.
- Servicing a nozzle is as simple as unloading a single cartridge and replacing it with a new one.

Compliance Testing Has Never Been This Easy

A standard No Pressure - No Flow feature prevents the nozzle from dispensing fuel if the nozzle doesn't detect pressure from the dispenser. This translates to quick and clean testing without the use of additional tools or the dispensing of fuel.

- To perform a compliance test, the service provider simply pulls the nozzle lever, authorizes the dispenser, and initiates testing.
- No fuel will be dispensed and no specialized keys, tools or magnets are needed to prevent fuel from flowing.
- Quicker testing times mean more time your dispenser positions are open for business.

Safety is Not Just an Option, It's a Must Have

At Franklin, we believe that you shouldn't have to pay extra for safety. It should be a given. That's why every Omni Series® nozzle comes with several standard key safety features.

- The No Pressure - No Flow feature provides a safe and reliable means of preventing accidental fuel spills, keeping your customers safe and your forecourt clean.
- The Over-Horizontal Automatic Shutoff feature safeguards against any unintentional fuel spillage if the nozzle is tilted past horizontal.
- Additional safety measures include a Full Tank Shutoff Port that automatically stops the flow of fuel once a vehicle's tank is full as well as a drip-less spout construction.

Customize Each Nozzle to Meet Your Needs

Omni Series® nozzles are available with a variety of customizable functional features that provide full compatibility with a wide assortment of popular dispenser models. This includes both an Open Vapour Path model and an ON/OFF Vapour Path model.

- Ideal for multiple-nozzle dispensers, the ON/OFF Vapour Path model will automatically sense which nozzle is in use and close the vapour return path in the idle nozzles, preventing clean air from being pulled into the system.
- The Open Path model is meant for single-nozzle dispensers.
- With seven different hand guard and hand guard magnet options to choose from, Omni Series® nozzles are compatible with most major dispenser models.

At Home in Any Petrol Station

To marketers and oil companies, a petrol station's brand is as important as the quality of the fuel flowing through it. It's how customers identify their preferred petrol station. Station owners need to carry their branding right through to the most-handled

Highlights - continued

element of the station – the nozzle.

- Omni Series® nozzles can be customized to match station branding with 11 different scuff guard color options.
- For the ultimate in customization choose from Franklin's growing library of standard nozzle badge options.
- Franklin can also help you create a completely custom badge.

A Complete Hanging Hardware Solution

With Omni Series®, you get a quality, complete hanging hardware solution all manufactured by a single company. Hanging hardware components in addition to the Omni Series® nozzle include hoses as well as break away valves and sight glasses.

- Each Omni Series® break away valve and sight glass provides durable and reliable protection against potential forecourt damage, fuel spill contamination, and loss of revenue or injury.
- Drive-offs occur in hundreds of forecourts around the world every day. Omni Series® break away valves ensure protection from hazardous fuel spills and costly damage caused when a vehicle drives away with a nozzle still in a vehicle's fill pipe.
- Omni Series® 21 mm vapour recovery hose is available in a wide assortment of custom length options to meet the needs of any application.

Specifications

- Flow rate capability: Up to 45 lpm
- Working pressure: Up to 3.5 bar
- Low temperature rating: -25 °C (Standard), -40 °C (Low Temp)
- Fuel compatibility: Motor fuels including petrol up to 15% ethanol
- Electrical conductivity: Factory tested to <100k Ohm
- Internal pressure: 14 bar
- Body material: Aluminium
- Spout material: Aluminium with stainless steel tip
- Lever material: Glass-filled Nylon
- Inlet size: M34
- Weight: 1,035 grams

Approvals/Certifications

- ATEX certified per the EN13012 standard.
- TÜV approval.

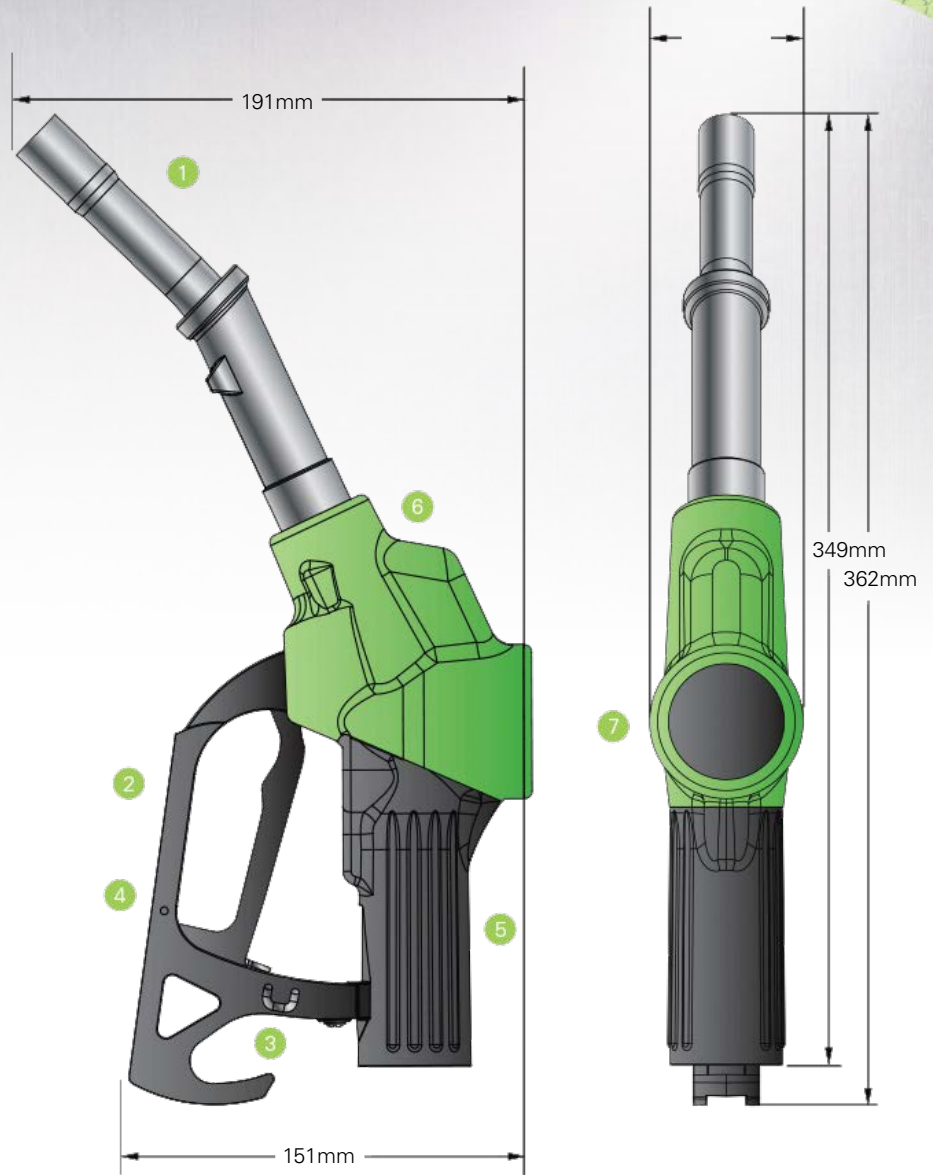
Additional Highlights

- Familiar, user-friendly and light-weight design.
- Modular design allows quick and easy repair and servicing.
- No pressure-no flow feature makes compliance testing quick and clean without the use of special tools or the dispensing of fuel.
- Over-horizontal automatic shutoff feature helps to prevent unintentional spills.
- Custom scuff guard colour options.
- Full range of hand guard and hand guard magnet options to fit the most popular dispenser models.
- Standard and cold-weather model options available.
- Latching pin option for full-service refueling available.
- The ON/OFF vapour path model is for use with multi-nozzle dispensers. This model will automatically sense which nozzle is in use and close the vapour return path in the idle nozzles, preventing clean air from being pulled into the system.
- The Open Vapour Path model is for use with single-nozzle dispensers equipped with vapour recovery equipment.

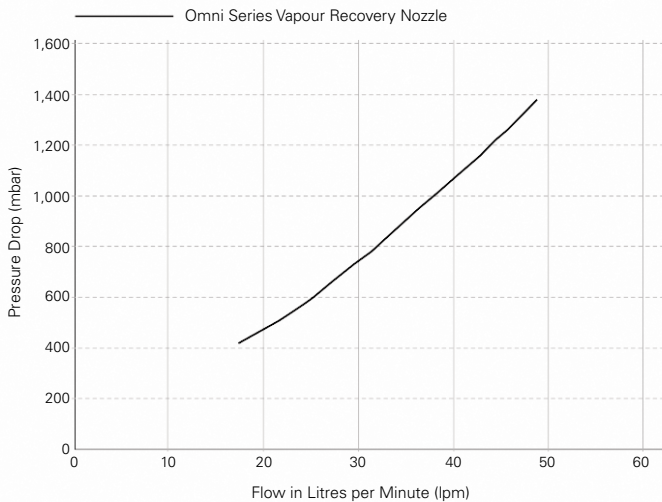
Specifications - continued

Components/Dimensions

1. Spout
2. Hand guard
3. Latch pin (optional)
4. Hand guard magnet (optional)
5. Handle cover
6. Scuff guard
7. Badge graphic (optional)



Flow vs. Pressure Drop



Order Information

Complete part numbers have a specific order and are created using the following guidelines and ordering diagrams:

OS - VA - BCDE - FG - H

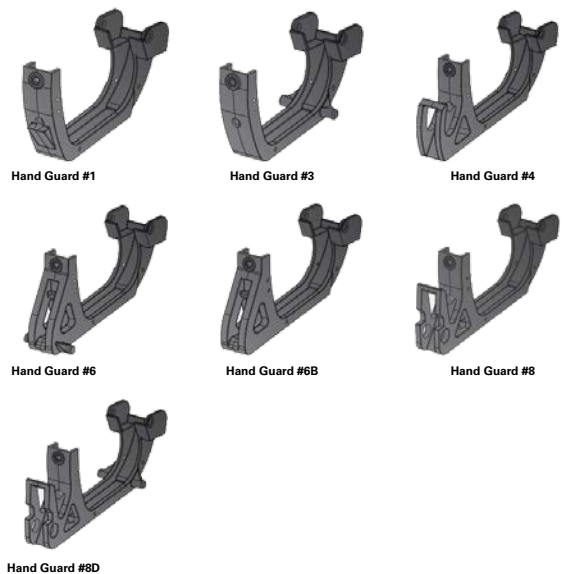
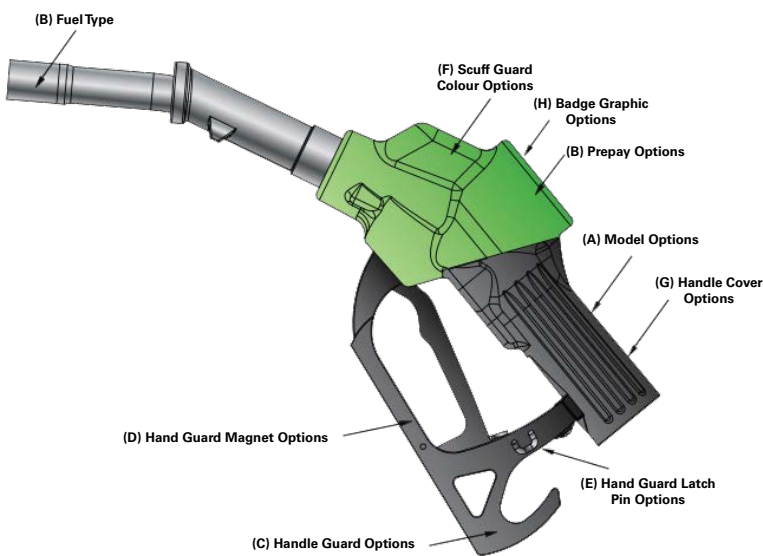
- OS = Omni Series® base model
- V = Vapour recovery nozzle
- A = Model options
 - O = Open path (no vapour valve)
 - C = Check valve (on/off vapour valve)
 - OL = Low temp. open path (-40 °C)
 - CL = Low temp. check valve (-40 °C)
 - OR = Open path w/ prepay restriction
 - CR = Check valve w/ prepay restriction
 - OLR = Low temp. open path (-40 °C) w/ prepay restriction
 - CLR = Low temp. check valve (-40 °C) w/ prepay restriction
- B = Fuel Type
 - U = Unleaded
- C = Hand guard options
 - A = #1 (Gilbraco™, Scheidt & Bachmann™)
 - C = #3 (Gilbraco™, Pumptronics™, Scheidt & Bachmann™)
 - E = #4 (Adast™, Dresser Wayne™, Gilbraco™, Pumptronics™, Tatsuno Benc™, & Tokheim™)
 - G = #6 (Tokheim™)
 - H = #6B (Tokheim™)
 - J = #8 (Dresser Wayne™, Gilbraco™, Hmag™, Instrumentoint™)
 - K = #8D (Dresser Wayne™)
- D = Hand guard magnet options
 - M = Magnet block
 - R = Round magnet
 - T = Two magnets (round & block)
 - W = Without magnets
- E = Hand guard latch pin options

- N = No latch (self-service)
- L = Latching (full-service)
- F = Scuff guard colour options
 - 00 = None
 - 01 = Black
 - 02 = Blue
 - 03 = Green
 - 04 = Gold
 - 05 = Orange
 - 06 = Red
 - 07 = Silver
 - 08 = White
 - 09 = Yellow
 - 10 = Light Blue
 - 11 = Light Green
- G = Handle cover options
 - N = Not imprinted
 - F = FFS logo imprinted
- H = Badge graphic options
 - 000 = No badge
 - 502 = Plain white badge graphic

See Badge Graphic Library opposite for additional badge options or contact Franklin Fueling Systems to have a custom badge graphic created.

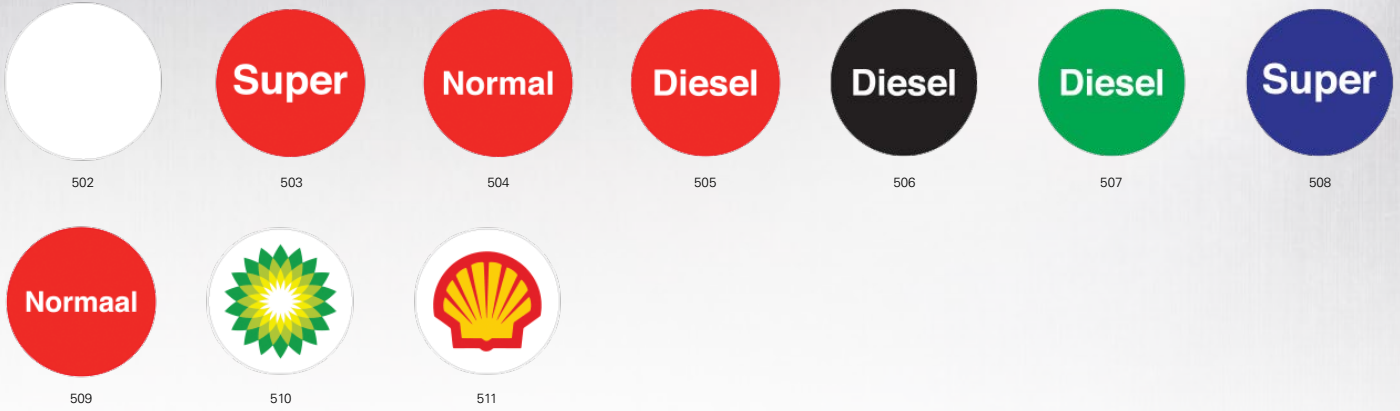
Example: OS-V0-UAMN-01N-502 = Omni Series® vapour recovery nozzle, open path, unleaded, with #1 hand guard, magnet block hand guard, no latch, black scuff guard, not imprinted handle cover, no badge graphic.

Ordering Diagrams



Omni Series® Nozzle Badge Graphic Library

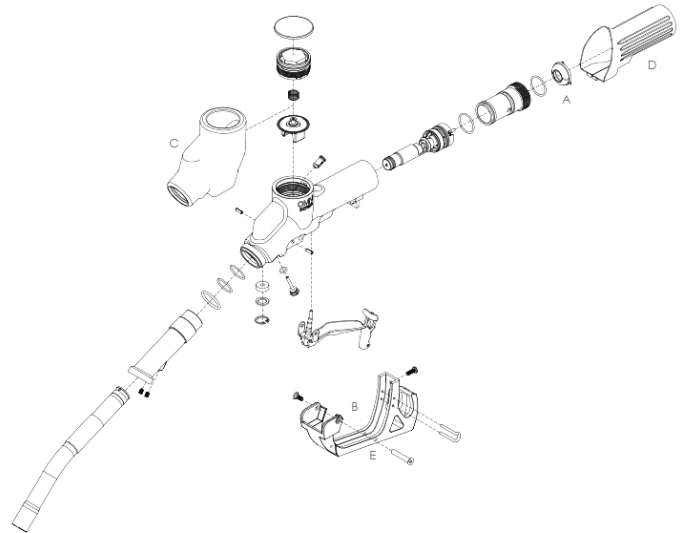
With each Omni Series® nozzle you have the option to choose from a selection of badge graphics to fit the use of the nozzle. Use the part number suffixes below in conjunction with the Ordering Guide above to create custom Omni Series® nozzle part numbers.



Omni Series® Replacement Parts

Use the drawing for reference.

Model	Description	Drawing
405655901	Vapour recovery nozzle filter screen	A
405655912	Handguard #1 (Gilbraco™, Scheidt & Bachmann™)	B
405655913	Handguard #3 (Gilbraco™, Pumtronics™, Scheidt & Bachmann™)	B
405655914	Handguard #4 (Adast™, Dresser Wayne™, Gilbraco™, Pumtronics™, Tatsuno Benc™, & Tokheim™)	B
405655915	Handguard #6 (Tokheim™)	B
405655916	Handguard #6B (Tokheim™)	B
405655917	Handguard #8 (Dresser Wayne™, Gilbarco™, Hmag™, Instrumentointi™)	B
405655918	Handguard #8D (Dresser Wayne™)	B
H117002B	Black scuffguard	C
H117002Y	Yellow scuffguard	C
H117002BL	Blue scuffguard	C
H117002LB	Light blue scuffguard	C
H117002R	Red scuffguard	C
H117002GD	Gold scuffguard	C
H117002G	Green scuffguard	C
H117002LG	Light green scuffguard	C
H117002O	Orange scuffguard	C
H117002S	Silver scuffguard	C
H117002W	White scuffguard	C
H118003	Handle boot	D
405655919	Magnet block with cover	E
405655920	Round magnet with fastener	E





VAPOUR RECOVERY HOSE

Omni Series® 21 mm vapour recovery hoses are available with both swivel and fixed end fitting options and come in a wide assortment of custom length options to meet the needs of any application. Their textile hose reinforcement allows for maximum flexibility suitable for use with hose retractor applications. Omni Series® vapour recovery hoses come standard with anti-kink sleeves on both ends of the hose to protect the hose from kinking and provide a long service life.

Highlights

- Stainless steel end fittings with optional integrated swivel for easy connection and freedom of movement.
- Standard anti-kink sleeves provide flexibility near hose end fittings while preventing the hose from kinking or collapsing.

Specifications

Specifications

- Compatibility: For unleaded fuels with up to 15% Ethanol content
- Tube construction: NBR, black, smooth
- Reinforcement: Textile spiral construction
- Cover construction: CR, black, smooth, electrically conductive
- Internal diameter: 21 mm
- Wall width: 5.5 mm
- External diameter: 32 mm

- Fittings: Stainless steel
- Work pressure (max.): 16 bar
- Bend radius: 130 mm
- Temperature rating: -30 °C to 60 °C

Approvals

- EN13483

Order Information

Ordering Guide

Complete part numbers have a specific order and are created using the following guidelines:

OS - VH - A - B - C - D - BK

- OS-VH = Omni Series® vapour recovery hose base model
- A = Hose Diameter
 - 21 = 21mm diameter
- B = Hose Length
 - See table below
- C & D = End Fitting Options
 - A = 21 mm, fixed end, M34 1.5
 - B = 21 mm, swivel end, M34 1.5
- BK = Standard Black Hose Colour

Hose Lengths

290 = 2.9 m	366 = 3.66 m	440 = 4.4 m	560 = 5.6 m
300 = 3.0 m	375 = 3.75 m	450 = 4.5 m	580 = 5.8 m
305 = 3.05 m	385 = 3.85 m	457 = 4.57 m	591 = 5.91 m
330 = 3.3 m	390 = 3.9 m	480 = 4.8 m	600 = 6.0 m
335 = 3.35 m	400 = 4.0 m	490 = 4.9 m	610 = 6.1 m
340 = 3.4 m	417 = 4.17 m	500 = 5.0 m	762 = 7.62 m
345 = 3.45 m	420 = 4.2 m	520 = 5.2 m	800 = 8.0 m
350 = 3.5 m	430 = 4.3 m	535 = 5.35 m	1224 = 12.24 m
360 = 3.6 m	435 = 4.35 m	540 = 5.4 m	

Example: OS-VH-21-450-A-B-BK = Omni Series® vapour recovery hose, 21 mm diameter, 4.5 m length, 21 mm fixed end, M34 1.5 end fitting and 21 mm, swivel end, M34 1.5 end fitting.



CONVENTIONAL HOSE

Omni Series® hoses are conventional-style hoses available in both 16 mm and 19 mm diameters. Hoses are available with both female union nut and fixed male end fitting options and come in a wide assortment of custom length options to meet the needs of any application. Their textile hose reinforcement allows for maximum flexibility suitable for use with hose retractor applications. Omni Series® hoses come standard with anti-kink sleeves on both ends of the hose to protect the hose from kinking and provide a long service life.

Highlights

- Stainless steel female end fitting options feature an integrated union nut for easy connection.
- Standard anti-kink sleeves provide flexibility near hose end fittings while preventing the hose from kinking or collapsing.

Specifications

Specifications

- Compatibility: For unleaded fuels with up to 15% Ethanol content
- Tube construction: NBR, black, smooth
- Reinforcement: Textile spiral construction
- Cover construction: CR, black, smooth, electrically conductive
- Internal diameter: 16 mm / 19 mm
- Wall width: 5 mm (16 mm) / 6 mm (19 mm)
- External diameter: 26 mm (16 mm) / 31 mm (19 mm)

- Fittings: Stainless steel (female union nut)
- Work pressure (max.): 16 bar
- Bend radius: 80 mm (16 mm) / 100 mm (19 mm)
- Temperature rating: -30 °C to 60 °C

Approvals

- EN13460

Order Information

Ordering Guide

Complete part numbers have a specific order and are created using the following guidelines:

OS - VH - A - B - C - D - BK

- OS-CH = Omni Series® hose base model
- A = Hose Diameter
 - 16 = 16 mm
 - 19 = 19 mm
- B = Hose Length
See table below
- C & D = End Fitting Options
 - D = 16 mm, 3/4" BSPP male
 - E = 16 mm, 3/4" BSPT male
 - I = 19 mm, 1" BSPP male
 - J = 19 mm, 3/4" BSPP male
 - M = 19 mm, 1" BSPP female
- BK = Standard Black Hose Colour

Hose Lengths			
290 = 2.9 m	366 = 3.66 m	440 = 4.4 m	560 = 5.6 m
300 = 3.0 m	375 = 3.75 m	450 = 4.5 m	580 = 5.8 m
305 = 3.05 m	385 = 3.85 m	457 = 4.57 m	591 = 5.91 m
330 = 3.3 m	390 = 3.9 m	480 = 4.8 m	600 = 6.0 m
335 = 3.35 m	400 = 4.0 m	490 = 4.9 m	610 = 6.1 m
340 = 3.4 m	417 = 4.17 m	500 = 5.0 m	762 = 7.62 m
345 = 3.45 m	420 = 4.2 m	520 = 5.2 m	800 = 8.0 m
350 = 3.5 m	430 = 4.3 m	535 = 5.35 m	1224 = 12.24 m
360 = 3.6 m	435 = 4.35 m	540 = 5.4 m	

Example: OS-CH-19-450-I-M-BK = Omni Series® hose, 16 mm diameter, 4.5 m length, 19 mm, 1" BSPP male end fitting and 19 mm, 1" BSPP female end fitting.



VAPOUR RECOVERY BREAK AWAY VALVES

Omni Series® vapour recovery break away valves ensure proper drive-off protection for vapour recovery refueling applications. Their lightweight, compact design allow for easy installation directly between the nozzle and hose. The integrated swivel action provides easy nozzle rotation during vehicle refueling while also helping to reduce hose wear and kinking.

Highlights

- Installs directly between the hose and nozzle.
- Compatible with high hose and retractor applications.
- Heat-treated aluminium or stainless steel construction.
- Separate with axial or up to 30° angular force.
- All rubber-to-machined metal connections ensure optimal sealing surfaces.
- Non-reusable design prevents unauthorized reconnection of breakaways by unqualified personnel or end user.
- Multiple models and thread size options available to accommodate the needs of any application.
- Clearly marked flow direction ensures proper installation.
- Easily installed without specialised tools. Simply mount the break away valve or directly into the nozzle and tighten using a torque wrench to 30 Nm.

Specifications

Specifications

- Nozzle flow rate compatibility: Up to 45 lpm
- Working pressures compatibility: 0.5 bar up to 3.5 bar
- Separation force: Between 800 N and 1,500 N force
- For use with motor fuels including: Gasoline, gasoline with up to 15% ethanol, diesel fuel
- Temperature rating: -30 °C to 55 °C
- Fuel release: < 10 ml after separation
- Internal pressure: BAV factory tested to 5.3 bar, SG factory tested to 3.5 bar
- Electric conductivity: Factory tested to < 100k Ohm

Approvals/Certifications

- ATEX approved.

Order Information

Model	Inlet Connection (Hose Side)	Outlet Connection (Nozzle Side)	Description
627980	M34x1.5 female coaxial	M34x1.5 male coaxial	Omni Series® vapour recovery break away valve with integrated swivel, aluminium
628980	M34x1.5 female	M34x1.5 male coaxial	Omni Series® vapour recovery break away valve with integrated swivel, stainless steel



CONVENTIONAL BREAK AWAY VALVES

Omni Series® conventional break away valves ensure proper drive-off protection for conventional refueling applications. Their lightweight, compact design allow for easy installation directly between the nozzle and hose. The integrated swivel action provides easy nozzle rotation during vehicle refueling while also helping to reduce hose wear and kinking.

Highlights

- Installs directly between the hose and nozzle.
- Compatible with high hose and retractor applications.
- Heat-treated aluminium or stainless steel construction.
- Separate with axial or up to 30° angular force.
- All rubber-to-machined metal connections ensure optimal sealing surfaces.
- Non-reusable design prevents unauthorized reconnection of breakaways by unqualified personnel or end user.
- Multiple models and thread size options available to accommodate the needs of any application.
- Clearly marked flow direction ensures proper installation.
- Easily installed without specialised tools. Simply mount the break away valve or directly into the nozzle and tighten using a torque wrench to 30 Nm.

Specifications

Specifications

- Nozzle flow rate compatibility: Up to 45 lpm
- Working pressures compatibility: 0.5 bar up to 3.5 bar
- Separation force: Between 800 N and 1,500 N force
- For use with motor fuels including: Gasoline, gasoline with up to 15% ethanol, diesel fuel
- Temperature rating: -30 °C to 55 °C
- Fuel release: < 10 ml after separation
- Internal pressure: BAV factory tested to 5.3 bar, SG factory tested to 3.5 bar
- Electric conductivity: Factory tested to < 100k Ohm

Order Information

Model	Inlet Connection (Hose Side)	Outlet Connection (Nozzle Side)	Description
627970	1" BSPP female	1" BSP male	Omni Series® break away valve with integrated swivel, aluminium
627971	M34x1.5 female	M34x1.5 male	Omni Series® break away valve with integrated swivel, aluminium
627984	1" BSPP female	M34x1.5 male	Omni Series® break away valve with integrated swivel, aluminium
627985	1" BSPP male	M34x1.5 male	Omni Series® break away valve with integrated swivel, aluminium
628970	1" BSPP female	1" BSP male	Omni Series® break away valve with integrated swivel, stainless steel
628971	M34x1.5 female	M34x1.5 male	Omni Series® break away valve with integrated swivel, stainless steel
628984	1" BSPP female	M34x1.5 male	Omni Series® break away valve with integrated swivel, stainless steel
628985	1" BSPP male	M34x1.5 male	Omni Series® break away valve with integrated swivel, stainless steel



HIGH FLOW BREAK AWAY VALVES & SIGHT GLASSES

Omni Series® high flow conventional break away valves ensure proper drive-off protection as well as provide visual fuel security for higher throughput conventional refueling applications. Their lightweight, compact design allow for easy installation directly between the nozzle and hose. The integrated swivel action provides easy nozzle rotation during vehicle refueling while also helping to reduce hose wear and kinking.

Highlights

- Installs directly between the hose and nozzle.
- Compatible with high hose and retractor applications.
- Heat-treated aluminium or stainless steel construction.
- Separate with axial or up to 30° angular force.
- All rubber-to-machined metal connections ensure optimal sealing surfaces.
- Non-reusable design prevents unauthorised reconnection of breakaways by unqualified personnel or end user.
- Multiple models and thread size options available to accommodate the needs of any application.
- Clearly marked flow direction ensures proper installation.
- Easily installed without specialised tools. Simply mount the break away valve or directly into the nozzle and tighten using a torque wrench to 30 Nm.

Specifications

Specifications

- Nozzle flow rate compatibility: Up to 140 lpm
- Working pressures compatibility: 0.5 bar up to 3.5 bar
- Separation force: Between 1,000 N and 1,500 N force
- For use with motor fuels including: Gasoline, gasoline with up to 15% ethanol, diesel fuel
- Temperature rating: -30 °C to 55 °C
- Fuel release: < 25 ml after separation
- Internal pressure: BAV factory tested to 5.3 bar, SG factory tested to 3.5 bar
- Electric conductivity: Factory tested to < 100k Ohm

Approvals/Certifications

- ATEX approved (627857 model).

Order Information

Model	Inlet Connection (Hose Side)	Outlet Connection (Nozzle Side)	Description
627875	M42x1.5 female	M42x1.5 male	Omni Series® high flow break away valve with integrated swivel, aluminium
627857*	M42x1.5 female	M42x1.5 male	Omni Series® high flow sight glass, aluminium

*ATEX approved.



INTEGRATED BREAK AWAY VALVES & SIGHT GLASSES

Omni Series® integrated break away valves and sight glasses ensure proper drive-off protection as well as provide visual fuel security for both conventional and vapour recovery refueling applications. With integrated models, the site glass is constructed directly into the body of the break away valve for a compact design. The stand alone sight glass models can be installed into existing hanging hardware to add visual fuel inspection capabilities. The integrated swivel action provides easy nozzle rotation during vehicle refueling while also helping to reduce hose wear and kinking.

Highlights

- Installs directly between the hose and nozzle.
- Compatible with high hose and retractor applications.
- Heat-treated aluminium or stainless steel construction.
- Separate with axial or up to 30° angular force.
- All rubber-to-machined metal connections ensure optimal sealing surfaces.
- Non-reusable design prevents unauthorised reconnection of breakaways by unqualified personnel or end user.
- Non-reusable design prevents unauthorised reconnection of breakaways by unqualified personnel or end user.
- Clearly marked flow direction ensures proper installation.
- Easily installed without specialised tools. Simply mount the break away valve or directly into the nozzle and tighten using a torque wrench to 30 Nm.

Specifications

Specifications

- Nozzle flow rate compatibility: Up to 45 lpm (vapour recovery models), up to 80 lpm (conventional models)
- Working pressures compatibility: 0.5 bar up to 3.5 bar
- Separation force: Between 800 N and 1,500 N force
- For use with motor fuels including: Gasoline, gasoline with up to 15% ethanol, diesel fuel
- Temperature rating: -30 °C to 55 °C
- Fuel release: < 10 ml after separation
- Internal pressure: BAV factory tested to 5.3 bar, SG factory tested to 3.5 bar
- Electric conductivity: Factory tested to < 100k Ohm

Approvals/Certifications

- ATEX approved (627859 & 627862 models).

Order Information

Model	Inlet Connection (Hose Side)	Outlet Connection (Nozzle Side)	Description
627982	M34x1.5 female	M34x1.5 male	Omni Series® vapour recovery break away valve with integrated swivel and sight glass, aluminum
627859*	M34x1.5 female	M34x1.5 male	Omni Series® vapour recovery sight glass, aluminum
627976	M34x1.5 female	M34x1.5 male	Omni Series® conventional break away valve with integrated swivel and sight glass, aluminum
627862*	M34x1.5 female	M34x1.5 male	Omni Series® conventional sight glass, aluminum

VP1000 SERIES

DISPENSER-MOUNTED VACUUM SOURCE



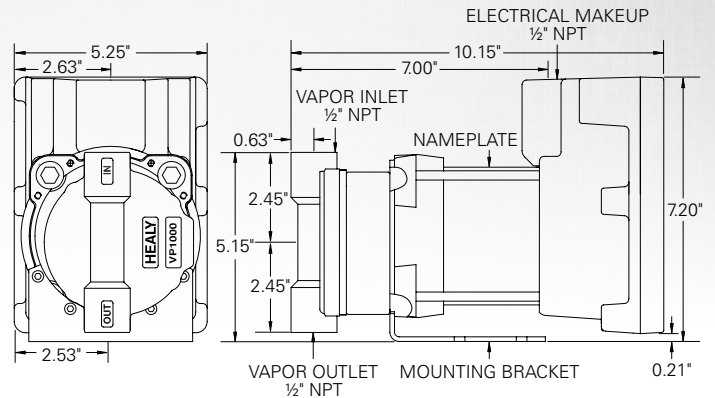
One vacuum pump per dispenser supplies both sides, reducing long term maintenance costs. The VP1000 has been designed to satisfy the vapour recovery needs of a blender or non-blender dispenser. Simple installation with no excavation minimises downtime and labor. The VP1000 connects to the dispenser with a simple interface module without costly software changes or electronic board replacement. This is the most cost-effective dispenser-mounted vacuum-assist system on the market today.

Highlights

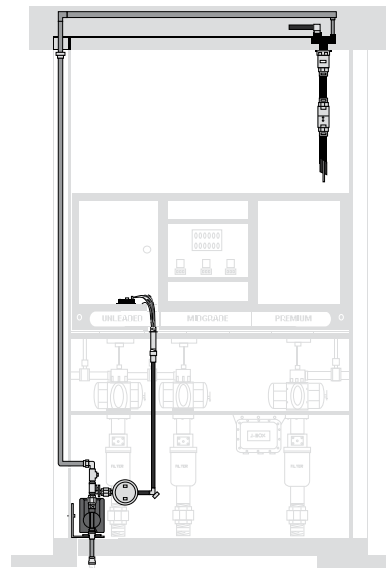
- Compatible with new and existing dispensers.
- Underground tank certification.

Specifications

CARB Certified for Use With	Executive Order Number	Tank Type
Healy™ 600 bootless nozzle	G-70-183	UST
Healy™ 800 ORVR nozzle	G-70-191	UST
Healy™ 900 EVR nozzle	VR-201	UST
	UST	UST



ALL DIMENSIONS ARE APPROXIMATE AND REFERENCE ONLY.



VP1000 INSTALLATION

Order Information

VP1000 Dispenser-Mounted Vacuum Source Kits

Each kit includes vapour and electrical conduits as listed below. One VP1000 per dispenser supplies both sides.

Model	Description
VP1000M	Gasboy™ (*) 9800 Series - Non-Vapour Ready to Healy™
Includes:	Z081H hardware kit
	Z081E electrical kit
	Z081V vapour kit
	VP1000-5 vacuum pump
	1374A MC100-1 interface module with harness



Order Information - continued

Model	Description
VP1000N	Dresser Wayne™ (*) Harmony™ (*) Series - Balance to Healy™
Includes:	Z078H hardware kit
	Z078E electrical kit
	Z078V vapour kit
	VP1000-5 vacuum pump
	1365A MC100-1 interface module with harness
VP1000P	Dresser Wayne™ (*) Ovation™ (*) Series - Balance or Wayne VAC to Healy™
Includes:	Z079H hardware kit
	Z079E electrical kit
	Z079V vapour kit
	VP1000-5 vacuum pump
	1365A MC100-1 interface module with harness
VP1000Q	Dresser Wayne™ (*) Harmony™ (*) Series - Wayne VAC to Healy™
Includes:	Z080H hardware kit
	Z080E electrical kit
	Z080V vapour kit
	VP1000-5 vacuum pump
	1365A MC100-1 interface module with harness
VP1000R	Gilbarco™ (*) Encore™ (*) 300 or 500 Series - Balance to Healy™
Includes:	Z082H hardware kit
	Z082E electrical kit
	Z082V vapour kit
	VP1000-5 vacuum pump
	1373A MC100-1 interface module with harness,
VP1000S	Gilbarco™ (*) Encore™ (*) 300 or 500 Series - VapourVac® (*) to Healy™
Includes:	Z082H hardware kit
	Z082E electrical kit
	Z083V vapour kit
	VP1000-5 vacuum pump
	1373A MC100-1 interface module with harness,
VP1000T	Dresser Wayne™ (*) 3 Vista™ (*) or 4 Vista™ (*) Series - Balance to Healy™
Includes:	Z084H hardware kit
	Z084E electrical kit
	Z084V vapour kit
	VP1000-5 vacuum pump
	1365A MC100-1 interface module with harness
VP1000V	Dresser Wayne™ (*) 1 Vista™ (*) or 2 Vista™ (*) blenders only - Balance to Healy™ (*)
Includes:	Z084H hardware kit
	Z084E electrical kit
	Z084V vapour kit
	VP1000-5 vacuum pump
	1363A MC100-1 interface module with harness,

VP1000 Dispenser Mounted Vacuum Source Kits (Non-Inclusive)

Kits do not include vapour and electrical conduits. Use Z070E and Z071V kits listed below. One VP1000 per dispenser supplies both sides.

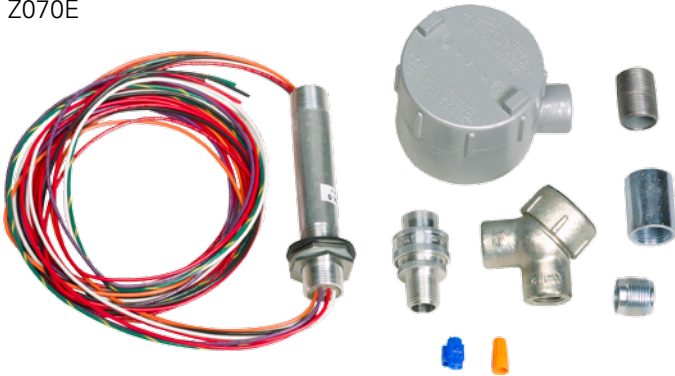
Model	Description
VP1000A	For use with all dispenser types, use if a model-specific VP1000D-V is not available. Includes VP1000-5 vacuum pump, 1360A interface module and 1404 universal hardware/mounting kit.
VP1000D	Gilbarco™ (*) 300 blender dispensers only (early model AC solenoid valves, pre-April 2003). Includes VP1000-5 vacuum pump, 1368A interface module with harness and 1404 universal hardware/mounting kit.
VP1000E	International only, VP1000-220, 1380A and 1404
VP1000G	Wayne™ (*) DL non-blender dispensers only. Includes VP1000-5 vacuum pump, 1354A interface module with harness and 1404 universal hardware/mounting kit.
VP1000H	Tokheim™ (*) Premier™ (*) C blender dispensers with 24 VDC solenoids only. Includes VP1000-5 vacuum pump, 1362A interface module with harness and 1404 universal hardware/mounting kit.
VP1000J	Tokheim™ (*) earlier-series blender dispenser with AC and DC solenoids. Includes VP1000-5 vacuum pump, 1372A interface module with harness and 1404 universal hardware/mounting kit.

Universal Vapour and Electrical Kits

For use with the VP1000 kits listed above.

Model	Description
Z070E	Electrical installation kit for VP1000 Series vacuum source, for use with VP1000A-J
Z071V	Vapour piping installation kit for VP1000 Series vacuum source, for use with VP1000A-J
Z069E	International only, 220V electrical installation kit for VP1000E

Z070E



Z071V



VP1000 Replacement Parts

Model	Description
1316	6" potted conduit assembly
1346	3" potted conduit assembly, used in Z078E, Z079E, Z080E and Z084E
1354	Wire harness for use with Wayne™ DL non-blenders
1354A	1354 wire harness with interface module
1360	Wire harness, universal
1360A	1360 wire harness with interface module, universal
1362	Wire harness for use with Tokheim™ Premier™ C blender dispensers with 24 VDC solenoids
1362A	1362 wire harness with interface module
1363	Wire harness for use with Wayne™ 1 Vista™ and 2 Vista™ blender dispensers
1363A	1363 wire harness with interface module
1365	Wire harness for use with Wayne™ Ovation™, 3 Vista™ and 4 Vista™ dispensers
1365A	1365 wire harness with interface module
1368	Wire harness for use with Gilbarco™ Encore™ 300 blender dispensers, early AC solenoids, pre-April 2003
1368A	1368 wire harness with interface module
1372	For use with earlier version Tokheim™ blender dispensers with AC and DC solenoids
1372A	1372 wire harness with interface module
1373	Wire harness for use with Gilbarco™ Encore™ 300 and 500 Series dispensers, with 24VDC solenoids
1373A	1373 wire harness with interface module
1374	Wire harness for use with Gasboy™ 9800
1374A	1374 wire harness with interface module
1404	Universal mounting kit
144401	VP1000 front cover assembly (98008 o-ring sold separately)
13602	Spare fuse 5 A, 250 Volt
MC100-1	Universal interface module only
VP1000-5	Vacuum pump only, 110 Volt
RVP1000-5	Rebuilt VP1000-5 vacuum pump only
VP1000-5 Core	VP1000-5 core in reusable condition for rebuild
VP1000VRC-G	VP1000 vacuum pump service kit containing glass fiber-filled vane, five vanes and pump cover O-ring
VP1000-220	International vacuum pump only, 220 Volt
MC200-1	International control module only, 220 Volt
131602901	International 6" potted conduit assembly, 220V
1380	International wire harness, universal 220V
1380A	International 1380 wire harness with interface module, universal 220V
MC100-1 PLUG	Replacement jumper plug for interface module
98008	O-ring for VP1000 front cover
144402	VP1000 front cover assembly (international only)



VP1200 SERIES

SELF-CONTAINED SUCTION PUMP DISPENSER-MOUNTED VACUUM SOURCE

Similar to the VP1000, except powered by a suction pump motor. One pump supplies both sides. Simple installation with no excavation minimises downtime and labor; ideal for retrofitting new or existing dispensers, installs easily on a bracket or attached to the frame of the unit. High vacuum level assures clearing of flooded vapour hoses.

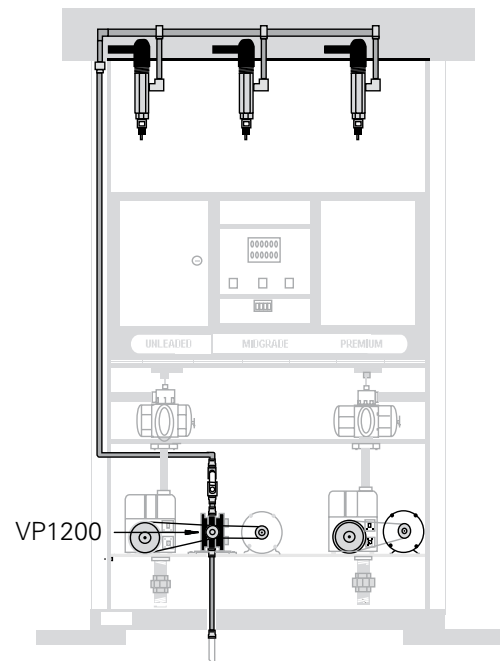
Highlights

- Small size: 5-1/4" x 5" x 4-3/8".
- Compatible with new and existing dispensers.
- International approvals, contact Franklin Fueling Systems.

Order Information

Model	Description
VP1200-11*	Replacement for VP1200-1 bronze rotor
VP1200-13*	Replacement for VP1200-3 with flame arrester bronze rotor
VP1200-21*	Self-contained suction pump-mounted assembly with PPS rotor
VP1200-23*	Self-contained suction pump-mounted assembly with PPS rotor and with flame arrester.
VP1200VR-B	Vane and rotor kit (bronze) VP1200VR Vane and rotor kit
127434	Machine key, square

Note: For international markets, contact factory for additional information.
Non-electric, powered by a suction dispenser pump motor.



VP1200 INSTALLATION



9000 MINI-JET

CENTRAL VACUUM PUMP

The popular, non-electric mini-jet offers the ultimate in versatility utilizing an existing STP's product flow to create vacuum for vapour recovery. One mini-jet can handle eight fuelling positions with four nozzles in simultaneous full flow operation. Additional mini-jets can be added for larger sites. Provides high reliability and low maintenance. High vacuum level assures clearing of flooded vapour hoses.

Highlights

- No electrical hook-up.
- No moving parts creating vacuum.
- Installs in standard existing STP tank sump.

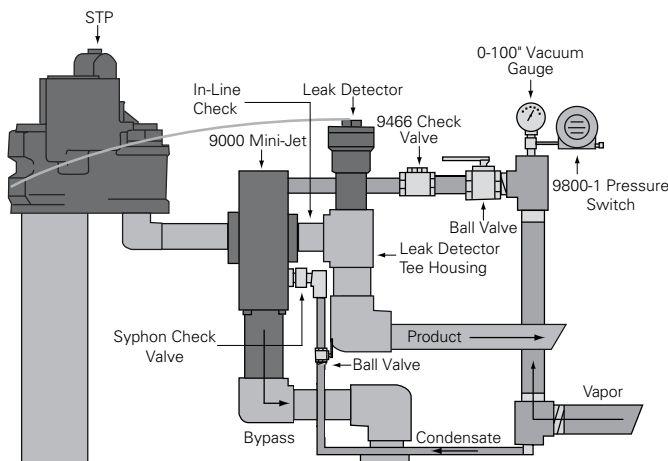
Specifications

CARB Certified for Use With	Executive Order Number	Tank Type
Healy™ 400 ORVR nozzle	G-70-187	AST
Healy™ 400 ORVR nozzle	G-70-186	UST
Healy™ 600 bootless nozzle	G-70-165	UST

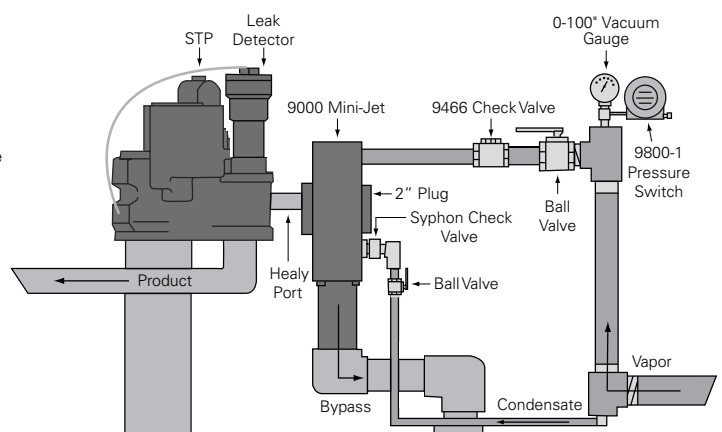
Order Information

Model	Description
9000-02	9000 mini-jet, non-electric with syphon port, can handle eight fuelling positions with four nozzles in simultaneous full flow
650-104-02	9000 mini-jet check valve strainer assembly (replaces 912A)
940A	Vacuum regulator upgrade kit
965	O-ring (1 per cover)
CV4	O-ring, for strainer assembly

Note: Central vacuum source installations may require the use of a monitor assembly.



IN-LINE INSTALLATION



HEALY™ PORT INSTALLATION





VP500 VANE CENTRAL VACUUM VANE PUMP

Provides the ultimate in central vacuum versatility. 115/230 VAC — 50/60 Hz application. High vacuum level assures clearing of flooded vapour hoses. Available in two versions. VP500B for mounting in a STP sump. Handles 10 fuelling positions with five nozzles in simultaneous full flow operation.

Highlights

- Flexible installation options.
- Low cost installation and operation.
- Unsurpassed low maintenance.

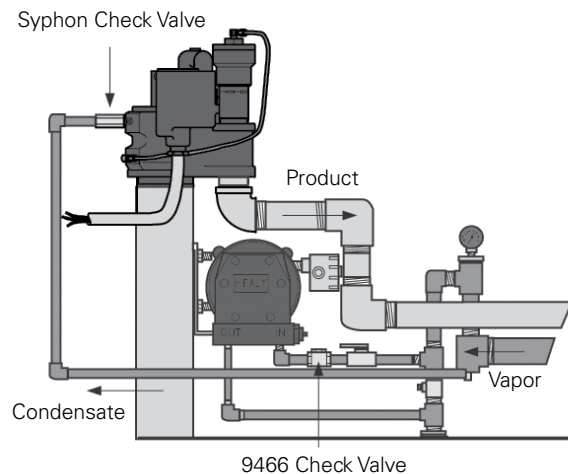
Specifications

CARB Certified for Use With	Executive Order Number	Tank Type
Healy™ 400 ORVR nozzle	G-70-187	AST
Healy™ 400 ORVR nozzle	G-70-186	UST
Healy™ 600 bootless nozzle	G-70-165	UST

Order Information

Model	Description
VP500B	VP500 vane pump with U-bolts and angle bracket for mounting, handles 10 fuelling positions with five nozzles in simultaneous full flow
VP500	Replacement VP500 vane pump with regulator and flame arrestor assembly
VP500VR-3	VP500 vane and rotor replacement kit, pin drive
5007A	Regulator assembly
9214	VP500 flame arrestor

Note: Central vacuum source installation may require the use of a monitor assembly





600 SERIES BOOTLESS

The 600 Series bootless vapour recovery nozzle is the international standard for Stage II components. For use on new or existing dispensers, it can be installed with both central or dispenser mounted vacuum sources.

Highlights

- Features the easy-to-use bootless design which captures the vapors through the nozzle spout rather than a boot.
- For use on new or existing dispensers.
- Includes easy-to-replace vapor escape guard to prevent splashback and significantly reduces spout wear.
- With the internal vapor flow control, vapor flow is matched to liquid flow by the nozzle itself, rather than by complex electronic controls or variable speed pumps in the dispenser.
- This internal vapor flow control helps simplify installation, reduce system costs, and can significantly reduce downtime, system diagnostics, and maintenance costs.
- External parts are field-replaceable.
- The lightweight and bootless design makes this a very user-friendly Stage II Vapor Recovery nozzle.

Specifications

- Weight: 3 Lbs (1.4 Kg)
- Flow rate: 10 gpm (37.85 lpm)

Approvals/Certifications

- CARB approved.
- UL listed (UL 2586).

CARB Certified for Use With	Executive Order Number	Tank Type
9000 mini-jet	G-70-165	UST
VP500 vane pump	G-70-165	UST
VP1000 Series vacuum pump	G-70-183	UST

Order Information

Model	Description
600-02G3 FS	600 bootless nozzle, unleaded, full-service with black scuffguard*
600-02G3 RFS	Rebuilt 600 bootless nozzle, unleaded, full-service with black scuffguard*
600-02G3 SS	600 bootless nozzle, unleaded, self-service with black scuffguard*
600-02G3 RSS	Rebuilt 600 bootless nozzle, unleaded, self-service with black scuffguard*
469	600 nozzle handle cover
600 Core	600 nozzle core, in reusable condition for rebuild
6030	600 nozzle scuffguard, black
6030BL	600 nozzle scuffguard, blue
6030G	600 nozzle scuffguard, green
6030GD	600 nozzle scuffguard, gold
6030R	600 nozzle scuffguard, red
6030SL	600 nozzle scuffguard, silver
6030W	600 nozzle scuffguard, white
6030Y	600 nozzle scuffguard, yellow
405219903	600 nozzle vapour escape guard and 6119 boot clamp, black
405220903	600 nozzle spout kit includes 6206-G4 spout assembly, 6206-OR O-ring kit, 6118 vapour escape guard, and 6119 boot clamp
405221901	600 nozzle hold-open clip kit includes 6238-2 hold-open clip, 239-L rear guard rivet, 6249 spring, 6130-4 lever assembly, 240-SS pal nut, 219 front guard rivet, 6358 handguard and 235-C lever cover

*Nozzles are supplied with black scuffguards unless otherwise specified. To order a nozzle with a scuffguard colour other than black, place appropriate "X" code after "G3" in model number, as follows: BL for blue, GD for gold, G for green, R for red, SL for silver, W for white or Y for yellow.





800 SERIES ORVR

Converts any new or existing dispenser to a CARB certified system for ORVR compatibility. ORVR detection is built into the nozzle, and there is no need for a back-end processor.

Highlights

- Features the easy-to-use design which captures the vapors through a reduced sized boot.
- Features internal ORVR sensor.
- With the internal vapor flow control, vapor flow is matched to liquid flow by the nozzle itself, rather than by complex electronic controls or variable speed pumps in the dispenser.
- This internal vapor flow control helps simplify installation, reduce system costs, and can significantly reduce downtime, system diagnostics, and maintenance costs.
- External parts are field-replaceable.
- The lightweight design makes this a very user-friendly Stage II Vapor Recovery nozzle.
- Comes with two standard safety shut-off features including a pressure sensing feature that terminates flow at the end of a prepaid sale even if the hook is still engaged and a horizontal shut-off to terminate flow whenever the spout tip is raised above horizontal.

Specifications

- Weight: 3.5 Lbs (1.6 Kg)
- Flow rate: 10 gpm (37.85 lpm)

Approvals/Certifications

- UL listed (UL 2586).
- CARB approved.

CARB Certified for Use With	Executive Order Number	Tank Type
VP1000 Series vacuum pump	G-70-191	UST

Order Information

Model	Description
800-02G3 FS	800 ORVR compatible nozzle, unleaded, full-service with black scuffguard*
800-02G3 RFS	Rebuilt 800 ORVR compatible nozzle, unleaded, full-service with black scuffguard*
800-02G3 SS	800 ORVR compatible nozzle, unleaded, self-service with black scuffguard*
800-02G3 RSS	Rebuilt 800 ORVR compatible nozzle, unleaded, self-service with black scuffguard*
469	800 nozzle handle cover
6408	800 nozzle scuffguard, black
6408BL	800 nozzle scuffguard, blue
6408G	800 nozzle scuffguard, green
6408GD	800 nozzle scuffguard, gold
6408R	800 nozzle scuffguard, red
6408SL	800 nozzle scuffguard, silver
6408W	800 nozzle scuffguard, white
6408Y	800 nozzle scuffguard, yellow
800 Core	800 nozzle core, in reusable condition for rebuild
405219902	800 nozzle mini-boot with face seal and 640956 boot clamp
405220902	800 nozzle spout kit includes 8177 spout assembly, 6206-OR O-ring kit, 6395A boot and 640956 boot clamp
405221901	800 nozzle hold-open clip kit includes 6238-2 hold open clip, 239-L rear guard rivet, 6249 spring, 6130-4 lever assembly, 240-SS pal nut, 219 front guard rivet, 6358 hand guard and 235-C lever cover

*Nozzles are supplied with black scuffguards unless otherwise specified. To order a nozzle with a scuffguard colour other than black, place appropriate "X" code after "G3" in the model number as follows: BL for blue, GD for gold, G for green, R for red, SL for silver, W for white or Y for yellow.



STANDARD



75 Series 3/4" Standard Healy™ Hose

Healy™ straight threaded swivels at nozzle and breakaway ends.

Model	Description
75B-030-S2S2	3' standard Healy™ coaxial hose
75B-035-S2S2	3½' standard Healy™ coaxial hose
75B-040-S2S2	4' standard Healy™ coaxial hose
75B-045-S2S2	4½' standard Healy™ coaxial hose
75B-050-S2S2	5' standard Healy™ coaxial hose
75B-055-S2S2	5½' standard Healy™ coaxial hose
75B-060-S2S2	6' standard Healy™ coaxial hose
75B-065-S2S2	6½' standard Healy™ coaxial hose
75B-070-S2S2	7' standard Healy™ coaxial hose
75B-075-S2S2	7½' standard Healy™ coaxial hose
75B-080-S2S2	8' standard Healy™ coaxial hose
75B-085-S2S2	8½' standard Healy™ coaxial hose
75B-090-S2S2	9' standard Healy™ coaxial hose
75B-095-S2S2	9½' standard Healy™ coaxial hose
75B-100-S2S2	10' standard Healy™ coaxial hose
75B-105-S2S2	10½' standard Healy™ coaxial hose
75B-110-S2S2	11' standard Healy™ coaxial hose
75B-115-S2S2	11½' standard Healy™ coaxial hose
75B-120-S2S2	12' standard Healy™ coaxial hose
75B-125-S2S2	12½' standard Healy™ coaxial hose
75B-130-S2S2	13' standard Healy™ coaxial hose
75B-135-S2S2	13½' standard Healy™ coaxial hose
75B-140-S2S2	14' standard Healy™ coaxial hose

Note: Healy™ hoses are available from three feet up to 20 feet; contact factory for pricing and availability of lengths not shown. Hoses are CARB-approved for overall assembly lengths up to 20 feet, including breakaway and whip hose.

Hoses are supplied in black unless otherwise specified. To order a hose in a colour other than black, replace "B" with the code as follows: BL = blue, G = green, R = red. Consult factory for pricing.

75 Series 3/4" Standard Whip Hose

For use with 8710VV breakaway and Healy™ product hose.



Model	Description
75B-008-F2F2	Healy™ straight thread, fixed ends on breakaway and dispenser ends
75B-008-F3F2	Healy™ straight thread, fixed end on breakaway end, metric thread on dispenser end
75B-008-S2F2	Healy™ straight thread, fixed end on breakaway end, swivel end on dispenser end
75B-008-S3F2	Healy™ straight thread, fixed end on breakaway end, metric swivel thread end on dispenser end
75B-010-S4F2	Fixed end on breakaway end, balance swivel end on dispenser end

Note: Hose ends are defined as follows: F2 = fixed ends with Healy™ straight thread, F3 = fixed ends with metric M-34 thread, S2 = swivel ends with Healy™ straight thread, S3 = swivel ends with metric M-34 thread, S4 = swivel ends with balance-type thread.

Hoses are supplied in black unless otherwise specified. To order a hose in a colour other than black, replace "B" with the code as follows: BL = blue, G = green, R = red. Consult factory for pricing.



METRIC AND BALANCE READY



75 Series 3/4" Healy™ Hose for Balance-Ready Dispensers

Healy™ straight thread fixed at 807 swivel breakaway or nozzle and balance-type thread swivel at dispenser outlet.

Model	Description
75B-080-S4F2	8' balance-ready dispenser coaxial hose
75B-085-S4F2	8½' balance-ready dispenser coaxial hose
75B-090-S4F2	9' balance-ready dispenser coaxial hose
75B-095-S4F2	9½' balance-ready dispenser coaxial hose
75B-100-S4F2	10' balance-ready dispenser coaxial hose
75B-105-S4F2	10½' balance-ready dispenser coaxial hose
75B-110-S4F2	11' balance-ready dispenser coaxial hose
75B-115-S4F2	11½' balance-ready dispenser coaxial hose
75B-120-S4F2	12' balance-ready dispenser coaxial hose
75B-125-S4F2	12½' balance-ready dispenser coaxial hose
75B-130-S4F2	13' balance-ready dispenser coaxial hose
75B-135-S4F2	13½' balance-ready dispenser coaxial hose
75B-140-S4F2	14' balance-ready dispenser coaxial hose

Note: Healy™ hoses are available from three feet up to 20 feet; contact factory for pricing and availability of lengths not shown. Hoses are CARB-approved for overall assembly lengths up to 20 feet, including breakaway and whip hose.

Hoses are supplied in black unless otherwise specified. To order a hose in a colour other than black, replace "B" with the code as follows: BL = blue, G = green, R = red. Consult factory for pricing.

75 Series 3/4" Healy™ Hose for Metric-Ready Dispensers

Healy™ straight thread fixed at 807 swivel breakaway or nozzle and metric thread swivel at dispenser outlet.



Model	Description
75B-080-S3F2	8' metric-ready dispenser coaxial hose
75B-085-S3F2	8½' metric-ready dispenser coaxial hose
75B-090-S3F2	9' metric-ready dispenser coaxial hose
75B-095-S3F2	9½' metric-ready dispenser coaxial hose
75B-100-S3F2	10' metric-ready dispenser coaxial hose
75B-105-S3F2	10½' metric-ready dispenser coaxial hose
75B-110-S3F2	11' metric-ready dispenser coaxial hose
75B-115-S3F2	11½' metric-ready dispenser coaxial hose
75B-120-S3F2	12' metric-ready dispenser coaxial hose
75B-125-S3F2	12½' metric-ready dispenser coaxial hose
75B-130-S3F2	13' metric-ready dispenser coaxial hose
75B-135-S3F2	13½' metric-ready dispenser coaxial hose
75B-140-S3F2	14' metric-ready dispenser coaxial hose

Hoses are supplied in black unless otherwise specified. To order a hose in a colour other than black, replace "B" with the code as follows: BL = blue, G = green, R = red. Consult factory for pricing.



BREAK AWAYS



75 Series Standard and Balance-Ready Healy™ Hose Break Aways

Model	Description
715VV	Repair kit for 8701VV breakaway, includes valves and O-rings
761	Nozzle end for 8701VV breakaway scuffguard
762	Dispenser end for 8701VV breakaway scuffguard
787	Nickel plated brass shear screw for 8701VV
787-1	Nickel plated brass shear screw for 807 swivel breakaway
795	Clamp repair tool for 8701VV and 807 breakaway
807	Swivel breakaway installed between hose and nozzle
8701VV	Standard hose breakaway with vapour path shut-off, 350 lbs. strength
Z055	O-ring kit for 8701VV with nickel plated shear screw
405417001	807 Swivel break away replacement scuff guard

HOSE ADAPTERS



75 Series Coaxial Hose Adapters

Model	Description
CX6-A	Hose adapter, non-vapour ready, NPT
CX6-AE	Hose adapter, non-vapour ready, BSP, international only
CX6-VV3A	Hose adapter, non-vapour ready, multi-product units

RETROFIT KITS

Dispenser Vapour Retrofit Kits

Model	Description
Z008	Standard for single-hose dispenser
Z009	Standard for dual-hose dispenser
Z044C	Universal for six-hose multi-product dispenser
Z046C	Universal for four-hose multi-product dispenser
Z047C	Universal for two-hose multi-product dispenser

Note: Hose adapters are not included in retrofit kits.



FLEX-ON™ HARDWALL CURB HOSE

FLEX-ING™ brand FLEX-ON™ Hardwall Hose features an abuse-resistant, solid wire braid construction that prevents kinking and assures a long service life and minimal maintenance. The ozone-resistant outer hose construction prevents ozone cracking and wear. This high quality hose offering features robust hose and fitting designs built to stand up to the harshest forecourt conditions.

Highlights

- Available in 5/8", 3/4" and 1" diameters, a variety of curb and whip hose lengths, and fixed or swivel fitting options
- Available with swivel fitting option for enhanced ease of use.
- Resistant to ozone cracking and wear.
- High gloss cover retains color quality.
- Stainless steel ferrules and fluoroelastomer seals to ensure compatibility with gasoline, diesel, Ethanol blends (up to E10) and biodiesel blends (up to B5).
- Compatible with reel or retractable cable dispensing applications.

Specifications

Specifications

- Tube: Synthetic rubber
- Cover: Ozone-resistant rubber
- Fittings: Machined nickel-plated carbon steel with chrome finish

- Reinforcement: Hardwall wire braided
- Temperature rating: -40 °F to 140 °F (-40 °C to 60 °C)
- For use with gasoline, diesel, Ethanol blends (up to E10) and biodiesel blends (up to B5).

Approvals

- UL and cUL listed.

Order Information

Ordering Guide

FLHFR A B C D E

- FLHFR = FLEX-ON™ Hardwall Hose
- A = Hose Diameter
 - 1 = 5/8"
 - 2 = 3/4"
 - 3 = 1"
- B = Hose Length Feet
 - Use three-digit format
- C = Hose length Inches
 - Use two-digit format

- D = Hose Colour Options
 - Blank = Black
 - YL = Yellow
 - RD = Red
 - GR = Green
 - BL = Blue
- E = Swivel Options
 - Blank = No Swivels
 - SWOE = Swivel on one end
 - SWEE = Swivel on both ends

Example: FLHFR200806YLSWOE = FLEX-ON™ Hardwall Hose, 3/4" diameter, 8 feet 6 inches length, yellow colour, swivel on one end.





FLEX-ON™ SOFTWALL CURB HOSE

FLEX-ING™ brand FLEX-ON™ Softwall Hoses provide a highly flexible, economical alternative to hardwall hose. Softwall hoses offer additional flexibility making them ideal for reel or retractor applications where longer hose lengths are required.

Highlights

- Available in ¾" and 1" diameters, a variety of curb and whip hose lengths, and fixed or swivel fitting options.
- Available with swivel fitting option for enhanced ease of use.
- The minimally designed structure promotes the high flexibility perfect for longer length applications requiring a retractor or reel.
- The lightweight design is ideal for longer length applications to ensure easy maneuverability of the hose over long distances.
- An integrated fitting spring extends inside the hose to provide extra strength and prevent kinking at hose ends.

Specifications

Specifications

- For use with gasoline, diesel, ethanol blends and biodiesel blends (up to E10)
- Available in ¾" and 1"
- Nitrile synthetic rubber tube
- Machined nickel plated fittings
- Optional swivel end fittings
- -40 °F to 140 °F (-140 °C to 60 °C) temperature rating

Approvals

- UL listed (hoses with fixed fittings).

Order Information

Ordering Guide

1(XXX) - 2(X) - 3(X) 4(X) 5(X) - 6(X) 7(X) - 8(XXXX)

- 1 = Hose Type
 - FLXSW = FLEX-ON FR Softwall
- 2 = Hose Diameter
 - 2 = ¾"
 - 3 = 1"
- 3 - 5 = Hose Length Feet
- 6 - 7 = Hose Length Inches
- 8 = Swivels
 - SWOE = Swivel on one end
 - SWEE = Swivel on both ends

Example: FLXSW201006SWOE = Softwall ¾" x 10' 6" male x male with swivel on one end.





FLEX-ON™ MARINA HOSE

FLEX-ING™ brand FLEX-ON™ marina hose is designed for dispensing gasoline to personal watercraft, boats, and commercial boats at both fresh and salt water marinas. These hoses feature robust hose and fitting designs that are built to stand up to the harshest conditions.

Highlights

- Available in ¾" and 1"
- Available with swivel fitting option for enhanced ease of use.
- The minimally designed structure promotes the high flexibility perfect for longer length applications requiring a retractor or reel.
- The lightweight design is ideal for longer length applications to ensure easy maneuverability of the hose over long distances.
- An integrated fitting spring extends inside the hose to provide extra strength and prevent kinking at hose ends.

Specifications

- Tube: Synthetic rubber, oil resistant sheet
- Cover: Synthetic rubber, oil resistant sheet, non-marking
- Fittings: Machined nickel-plated steel with aluminum ferules
- Reinforcement: Braided two-layer synthetic yarn with static wire
- Temperature rating: -40 °F to 140 °F (-40 °C to 60 °C)

Order Information

Ordering Guide

FLXBM A B C D

- FLXBM = FLEX-ON™ Marina Hose
- A = Hose Diameter
 - 2 = ¾"
 - 3 = 1"
- B = Hose Length Feet
 - Use three-digit format
- C = Hose length Inches
 - Use two-digit format
- D = Swivel Options
 - Blank = No Swivels
 - SWOE = Swivel on one end
 - SWEE = Swivel on both ends

Example: FLXBM201006SWOE = FLEX-ON™ Marina Hose, ¾" diameter, 10 feet, 6 inches, swivel on one end.





FLEX-COLD COLD WEATHER HOSE

FLEX-ING™ brand FLEX-COLD cold weather hose is designed for dispensing gasoline in extremely cold environments. This hose is designed to remain flexible in environments where temperatures reach as low as -65 °F (-54 °C). Each end fitting is assembled onto the hose with exacting precision and then fully tested before leaving the factory.

Highlights

- Available in ¾" and 1".
- Premium extra thick hose construction for superior performance in cold environments.
- Available with fixed fittings.
- Compatible with reel or retractable cable dispensing applications.

Specifications

Specifications

- Tube: Black, low-temperature synthetic rubber
- Cover: Black, low temperature synthetic rubber (wrapped finish)
- Reinforcement: Braided synthetic yarn with antistatic wire
- Fittings: Machined nickel-plated steel with chrome finish and aluminum ferrules

- Temperature: -65 °F to 140 °F (-54 °C to 60 °C)
- For use with gasoline, diesel, ethanol blends and biodiesel blends (up to E15)

Approvals

- UL 330 and cUL approved.

ID		Nom. OD		Weight	
In.	mm	In.	mm	Lb./Ft.	kg/m
¾	19.1	1.13	28.7	0.32	0.48
1	25.4	1.5	38.1	0.57	0.85

Order Information

Ordering Guide

FLXCW A B C

- FLXCW = FLEX-COLD Cold Weather Hose
- A = Hose Diameter
 - 2 = ¾"
 - 3 = 1"
- B = Hose Length Feet
 - Use three-digit format
- C = Hose Length Inches
 - Use two-digit format

Example: FLXCW200906 = FLEX-COLD cold weather hose, ¾" diameter, 9 feet 6 inches length.

¾" FLEX-COLD Cold Weather Hose

Model	Description
FLXCW200800	¾" X 8' FLEX-COLD cold weather hose
FLXCW200900	¾" X 9' FLEX-COLD cold weather hose
FLXCW201000	¾" X 10' FLEX-COLD cold weather hose
FLXCW201200	¾" X 12' FLEX-COLD cold weather hose
FLXCW201500	¾" X 15' FLEX-COLD cold weather hose
FLXCW202500	¾" X 25' FLEX-COLD cold weather hose
FLXCW203000	¾" X 30' FLEX-COLD cold weather hose

1" FLEX-COLD Cold Weather Hose

Model	Description
FLXCW300800	1" X 8' FLEX-COLD cold weather hose
FLXCW300900	1" X 9' FLEX-COLD cold weather hose
FLXCW301000	1" X 10' FLEX-COLD cold weather hose
FLXCW301200	1" X 12' FLEX-COLD cold weather hose
FLXCW302000	1" X 20' FLEX-COLD cold weather hose
FLXCW302500	1" X 25' FLEX-COLD cold weather hose
FLXCW303000	1" X 30' FLEX-COLD cold weather hose





HARDWALL SERVICE STATION AIR

FLEX-ING™ brand ¼" hardwall service station air hose is designed for tire inflation service from towers, reels or curb connections.

Highlights

- The abuse-resistant, solid wire braid construction prevents kinking and assures a long service life and minimal maintenance.
- The abrasion- and oil-resistant synthetic rubber cover will stand up to the constant contact with the forecourt pavement.
- Available in standard 25' lengths for full access to all four standard vehicle tires or 50' lengths for larger commercial vehicles.

Specifications

- Tube: Nitrile synthetic rubber, RMA Class B (medium/high oil resistance)
- Cover: Red or black nitrile synthetic rubber, abrasion- and oil-resistant, RMA Class B (medium/high oil resistance)
- Reinforcement: Braided (1) steel wire braid
- Fittings: Brass NPT
- Working pressure: 250 PSI
- Temperature: -20 °F to 160 °F (-40 °C to 71 °C)

ID		Nom. OD		Max. WP		Weight	
In.	mm	In.	mm	psi.	Mpa	Lb./Ft.	kg/m
¼	6.4	0.61	15.5	250	1.72	0.18	0.28

Order Information

Model	Description
FLBAH25X025	25' black hardwall service station air hose
FLBAH25X025-FSWOE	25' black hardwall service station air hose, swivel on one end
FLBAH25X050	50' black hardwall service station air hose
FLBAH25X050-FSWOE	50' black hardwall service station air hose, swivel on one end
FLRAH25X025	25' red hardwall service station air hose
FLRAH25X025-FSWOE	25' red hardwall service station air hose, swivel on one end
FLRAH25X050	50' red hardwall service station air hose
FLRAH25X050-FSWOE	50' red hardwall service station air hose, swivel on one end





SOFTWALL SERVICE STATION AIR

FLEX-ING™ brand ¼" softwall service station air hose is an economical air and water hose ideal for a wide range of industrial, construction and agricultural applications.

Highlights

- The abuse-resistant, solid wire braid construction prevents kinking and assures a long service life and minimal maintenance.
- The abrasion- and oil-resistant synthetic rubber cover will stand up to the constant contact with the forecourt pavement.
- Available in standard 25' lengths for full access to all four standard vehicle tires or 50' lengths for larger commercial vehicles.

Specifications

- Tube: Versigard® synthetic rubber, RMA Class C (Limited Oil Resistance)
- Cover: Black, Red, or Blue Versigard® synthetic rubber (*)
- Reinforcement: Spiral synthetic yarn
- Fittings: Brass NPT
- Working pressure: 200 PSI
- Temperature: -40 °F to 160 °F (-40 °C to 71 °C)

ID		Nom. OD		Max. WP		Weight	
In.	mm	In.	mm	psi.	Mpa	Lb./Ft.	kg/m
¼	6.4	0.53	13.5	200	1.38	0.1	0.15

Order Information

Model	Description
FLXAH25X025BK	1/4" x 25' black softwall service station air hose
FLXAH25X025BL	1/4" x 25' blue softwall service station air hose
FLXAH25X025RD	1/4" x 25' red softwall service station air hose
FLXAH25X025-FSWOEBK	1/4" x 25' black softwall service station air hose, swivel on one end
FLXAH25X025-FSWOEBL	1/4" x 25' blue softwall service station air hose, swivel on one end
FLXAH25X025-FSWOERD	1/4" x 25' red softwall service station air hose, swivel on one end
FLXAH25X050BK	1/4" x 50' black softwall service station air hose
FLXAH25X050BL	1/4" x 50' blue softwall service station air hose
FLXAH25X050RD	1/4" x 50' red softwall service station air hose
FLXAH25X050-FSWOEBK	1/4" x 50' black softwall service station air hose, swivel on one end
FLXAH25X050-FSWOEBL	1/4" x 50' blue softwall service station air hose, swivel on one end
FLXAH25X050-FSWOERD	1/4" x 50' red softwall service station air hose, swivel on one end





ETHANOL HOSE

The 3/4" Flexsteel® Futura™ Ethan-ALL™ dispensing hose assembly is UL certified for use in ethanol dispensing applications up to E85.

Highlights

- Hose cover features a premium abuse-resistant cover compound with enhanced ozone resistance for service longevity.
- Premium nickel coated end fittings ensure corrosion resistance.

Specifications

- Tube: Nitrile synthetic rubber
- Cover: Synthetic rubber (wrapped finish)
- Reinforcement: Wire braid
- Temperature: -40°F to 140°F (-40°C to 60°C)

ID		Nom. OD		Max. WP		Weight	
In.	mm	In.	mm	psi.	Mpa	Lb./Ft.	kg/m
3/4	19.1	1.13	28.7	50	0.34	0.46	0.69

Approvals

- The tube construction meets the E25/E85 compatibility test requirements of UL 87A.

Order Information

Model	Description
FLXE200009	3/4" x 9' ethanol hose
FLXE200100	3/4" x 1' ethanol hose
FLXE200800	3/4" x 8' ethanol hose
FLXE200900	3/4" x 9' ethanol hose
FLXE201000	3/4" x 10' ethanol hose
FLXE201200	3/4" x 12' ethanol hose
FLXE201400	3/4" x 14' ethanol hose
FLXE201600	3/4" x 16' ethanol hose
FLXE201800	3/4" x 18' ethanol hose
FLXE202000	3/4" x 20' ethanol hose
FLXE205000	3/4" x 50' ethanol hose





SAFETY-SEVER™ BREAK AWAYS

EBW® brand Safety-Sever™ break aways prevent drive offs from becoming major disasters by uncoupling and instantly sealing both ends of the break. They prevent costly damage to dispensers, eliminate downtime and avert the major danger of runaway fuel spillage. A safety-sever coupler can be reconnected in minutes by simply replacing the metal tipped shear screw. The break away force provides ample protection for dispensers, while preventing accidental disconnection caused by ordinary aggressive hose handling.

Highlights

- Easy break away field reconnection with replacement shear screw.
- Available in ¾" NPT, BSPP and BSPT and 1" NPT inlet options.
- 1" model provides greater flow rates ideal for truck stops and other high-capacity flow rate applications.

Specifications

Specifications

- cULus listed for use with gas 10% ethanol blend and diesel.

Order Information

Model	Description
697-137-01	¾" NPT Safety-Sever™ break away
698-133-21 *	¾" BSPT Safety-Sever™ break away
697-133-01	¾" Safety-Sever™ break away replacement shear screw
797-225-01	1" NPT Safety-Sever™ break away
797-133-01	1" Safety-Sever™ break away replacement shear screw

*Non-reconnectable.

HEX075FNP



BAX075FNPT

VAX075FNPT

RE-STAGE™ ADAPTERS

FLEX-ING™ brand RE-STAGE™ Conversion Adapters provide an easy and cost-effective means for converting Stage II Vapour Recovery hanging hardware over to a conventional system. The adapters simply screw into the dispenser outlet and in-line with Safety Break Hose.

Specifications

- Aluminium construction
- Vacuum-assist vapour recovery to 3/4" standard conventional model
- Balance to 3/4" standard conventional model
- Healy™ vacuum-assist to 3/4" standard conventional model

Order Information

Model	Description
VAX075FNPT	Vapour recovery conversion adapter, vac-assist to 3/4" standard conventional
BAX075FNPT	Balance vapour recovery conversion adapter, balance to 3/4" standard conventional
HEX075FNP	HEALY™ vac-assist conversion adapter, HEALY™ vac-assist to 3/4" standard conventional



402 UTILITY

This nozzle is constructed of high tensile strength aluminium alloy. Its angled design allows more efficient fuelling positions by reducing hose wear and pinch points. It features a zinc plated steel lever and molded Buna-N or fluorocarbon disc seats and O-rings. A throttling disc is also available for smooth operation.

Highlights

- Spout: 15/16" aluminum (leaded), 13/16" aluminum (unleaded)
- Body: Heat-treated aluminum
- Poppet seal: UL listed Nitrile
- Weight: 1.31 Lbs (0.59 Kg) For use with gasoline, diesel and Ethanol blends up to E15.

Approvals/Certifications

- UL listed (UL 2586).

Order Information

Model	Description	Inlet Size:		Outlet	Weight	
		In.	mm		lbs.	Kg
402315901	¾" utility nozzle, leaded spout	0.75	19.1	Leaded	1.31	0.59
402315902	1" utility nozzle, leaded spout	1	25.5	Leaded	1.31	0.59
402315903	¾" utility nozzle, unleaded spout	0.75	19.1	Unleaded	1.31	0.59
402315904	1" utility nozzle, unleaded spout	1	25.5	Unleaded	1.31	0.59
90003	Utility nozzle service kit, includes: O-ring, seal ring, and poppet assembly	0.75	19.1	Leaded	1.31	0.59

*Biofuel approved models (E15 and biofuel).



410 FUEL OIL

The EBW® 410 fuel oil delivery nozzle has hold-open notches and a lever pin bushing made of Nylafil, which resists wear five times longer than metal and is unaffected by temperature extremes. This is the most rugged nozzle available with a heavy duty body and increased wear lugs. Dashpot construction ensures smooth opening, shockproof closure and maximum flow.

Highlights

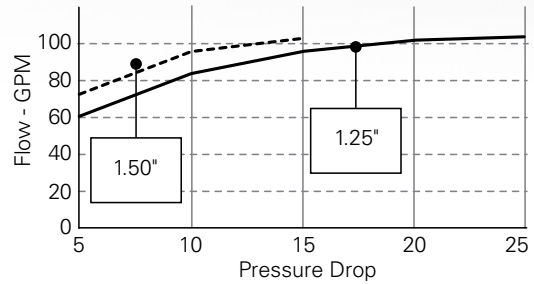
- 100 psi rating.
- Aluminium body.
- Stainless steel stem.
- PTFE-impregnated graphite package.
- Fluorocarbon disc.
- Patent number 3285564.

Specifications

Materials

- Body: aluminium.
- Stem: stainless steel.
- Packing: PTFE-impregnated graphite.
- Discs: fluorocarbon.
- Note: Tubes not included and must be ordered separately. See page 79.

EBW 410 Nozzles



- **WARNING:** This is a non-automatic nozzle with a manually operated latch which will not shut off automatically. Use should be limited to applications sanctioned by OSHA, State Fire Marshal Codes, and other appropriate regulating bodies and/or safety codes.

Order Information

Model	Inlet Size:		Outlet Size		Weight	
	In.	mm	In.	mm	Lbs.	Kg
41030003	1.25	31.9	1.25	31.9	1.31	0.59
41040103	1.5	38.3	1.5	38.3	1.31	0.59





415 BULK

The EBW® automatic bulk fuelling nozzle is an extra heavy duty, high flow fuel dispensing nozzle designed for bulk fuelling operations such as marine/truck/bus dispensing or home fuel oil delivery. This nozzle comes complete with automatic venturi shut-off and a dual position, hold-open mechanism.

Highlights

- Extra-large hand opening to accommodate gloves or mittens.
- Check valve is in nozzle body, not spout, for inexpensive, fast spout replacement.
- Self-adjusting stem packing means no field adjustment is required.
- Automatic shut-off with dual poppets for easy opening.
- Two position hold-open latch.
- Right angle design allows nozzle to fit close to walls and corners.
- Cast-in protective standoffs provide durability with rough usage.

Specifications

Materials

- Body: cast aluminium.
- Stem: stainless steel.
- Packing: PTFE-impregnated graphite.
- Discs: fluorocarbon.

Order Information

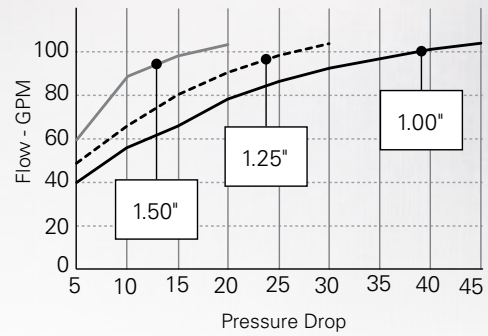
Model	Inlet Size:		Outlet Size	
	In.	mm	In.	mm
41511001	1.5	38.1	3.31	73

490 DUEL POPPET

This nozzle fulfills your requirements when dashpot construction is not required. The same rugged construction and long wear features of the 410 dashpot nozzle have also been built into this model.



EBW 490 Nozzles



Specifications

Materials

- Body: aluminium.
- Stem: stainless steel.
- Packing: PTFE-impregnated graphite.
- Discs: fluorocarbon.

- Note: Tubes not included and must be ordered separately. See page 79.
- **WARNING:** This is a non-automatic nozzle with a manually operated latch which will not shut-off automatically. Use should be limited to applications sanctioned by OSHA, State Fire Marshal Codes, and other appropriate regulating bodies and/or safety codes.

Order Information

Model	Inlet Size:		Outlet Size		Weight	
	In.	mm	In.	mm	Lbs.	Kg
49030105	1	25.5	1.25	31.9	1.38	0.62
49030106	1.25	31.9	1.25	31.9	1.38	0.62
49030201	1.25	38.3	1.5	38.3	1.38	0.62



498 MANUAL

The 498 manual nozzle has a cast aluminium body, stainless steel trim and aluminium chrome plated parts, for trouble-free service and easy operation. In addition, this nozzle's high flow, minimum pressure loss and excellent throttling characteristics provide fast and accurate deliveries with top-off control. Its ball-burnished finish also adds an attractive appearance to any pump installation.

Highlights

- PTFE-impregnated graphite.

Specifications

Materials

- Spout: 15/16" aluminum (leaded), 13/16" aluminum (unleaded)
- Body: Heat-treated aluminum
- Packing: PTFE-impregnated graphite
- Poppet seal: UL listed Nitrile
- Weight: 1.31 Lbs (0.59 Kg)
- For use with gasoline, diesel and Ethanol blends up to E15.

Approvals/Certifications

- UL listed (UL 2586).

Order Information

Model	Inlet Size:		Outlet	Seal	Weight	
	In.	mm			Lbs.	Kg
49830101	0.75	19.1	Leaded	Buna-N	1.38	0.62
49830102	1	25.5	Leaded	Buna-N	1.38	0.62
49830106	1	25.5	Leaded	Buna-N	1.38	0.62

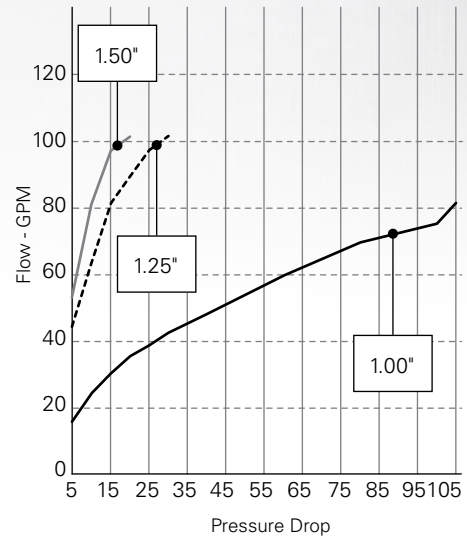


495 AIRCRAFT

Standard features include a 100 mesh tube strainer, a dust cap assembly and a 6-1/2' static discharge ground wire. 1-1/4" and 1-1/2" models have an aluminium discharge tube with a knurled area for hand assembly; the 1" model has a brass tube standard. Dashpot construction ensures smooth opening, shockproof closure and maximum flow.

Nozzle can be built to military specifications, consult factory for details.

EBW 495 Nozzles



Specifications

- Patent number 3,285,564.
- **WARNING:** This is a non-automatic nozzle with a manually operated latch which will not shut-off automatically. Use should be limited to applications sanctioned by OSHA, State Fire Marshal Codes, and other appropriate regulating bodies and/or safety codes.

Order Information

Model	Inlet Size:		Outlet Size		Weight	
	In.	mm	In.	mm	Lbs.	Kg
49540001	1.5	38.3	1.50 NPT	38.3	6.5	3
49540101	1.25	31.9	1.25 NPT	31.9	5.3	2.4
49540201	1	25.5	1.25 NPT	31.9	4.15	1.9

495 Replacement Parts

Bauteil	495-400-01	495-401-01	495-402-01	495-404-01
	Model	Model	Model	Model
Spout	495-210-01	495-211-01	495-112-01	495-210-01
Strainer	495-208-01	495-125-01	495-204-01	
Dust cap assembly	495-105-01	495-106-01	495-111-01	495-105-01
Ground wire assembly	495-107-01	495-107-01	495-107-01	497-107-01

Model	Description
49512001	1-1/2" aluminium tube and brass strainer assembly
49512002	1-1/2" tube and strainer assembly, brass
49512201	1-1/4" aluminium tube and brass strainer assembly





ACCUBREAK™ UTILITY BREAK AWAYS

FLEX-ING™ brand ACCUBREAK™ utility break aways are designed to provide protection for dispensing equipment at high capacity fueling locations. These heavy-duty break aways are ideal for applications including marinas, truck and bus terminals, off road refueling, fuel oil delivery and other industrial applications.

Highlights

- Brass break rings provide consistent separation force.
- Ball check valves seal both halves instantly upon separation eliminating fuel loss.
- No fuel is lost during reassembly as the two halves seal before the check valves open.
- Available in 2" and 3" NPT inlet options.

Specifications

- Body and ring cover: Machined solid aluminum bar stock with nickel plating
- Seals: Nitrile
- Check valve: PTFE
- Max. working pressure: 50 PSI
- Break ring break force: 400 Lbs.
- ACCUBREAK™ utility break aways are not intended for use in commercial retail applications.
- For use with gasoline 10% ethanol blend and diesel fuel.

Model	Height		Weight	
	In.	cm	Lbs.	kg
1¼"	9	22.86	1.1	0.5
1½"	9	22.86	1.1	0.5

Order Information

Model	Description
BRK14-N	1¼" NPT ACCUBREAK™ utility break away
BRK15-N	1½" NPT ACCUBREAK™ utility break away



SINGLE-PLANE UTILITY SWIVELS

EBW® brand single-plane utility swivels are designed to provide an in-line swivel action between the nozzle and hose, providing ease of delivery in utility refuelling applications.

Highlights

- O-ring seals provide smooth swivel action with little effort while remaining leakproof.
- Waterproof dust seal assures constant free-turning action.
- 1¼" and 1½" NPT inlet/outlet options available to accommodate larger diameter utility nozzles and hoses.
- Available with check option to prevent back flow.

Specifications

- Body: Hard-coated anodized aluminium
- O-rings: Fluorocarbon
- 1¼" weight: 0.69 Lbs (0.31 Kg)
- 1½" weight: 0.72 Lbs (0.33 Kg)
- Swivels at up to 125 Psi

Order Information

Model	Description
46510101	1¼" x 1¼" single-plane utility swivel
46510102	1¼" x 1¼" single-plane utility swivel with check valve
46510201	1½" x 1½" single-plane utility swivel
46510202	1½" x 1½" single-plane utility swivel with check valve

ACCESSORIES

Brass Nozzle Tubes

Nozzle tubes fit EBW® 410 and 490 nozzles, are constructed of brass for durability and include a cast brass nut for a secure attachment to the nozzle.

Model	Thread Size		Tube Dia.		Tube Length		Weight	
	In.	mm	In.	mm	In.	mm	Lbs.	Kg
41011601	1.5	38.3	1.38	35.2	8.5	216.8	1	0.45
41012201	1.25	31.9	1.12	28.6	8.5	216.8	0.88	0.4
41012901	1.5	38.3	1.62	41.3	8.5	216.8	1	0.45
41013301	1.25	31.9	1.38	35.2	8.5	216.8	1	0.45

Aluminium Tube Nozzles

Nozzle tubes fit EBW® 410 and 490 nozzles and are constructed of schedule 40 aluminium. 491-107-01 includes a 1-1/4" brass nut for a secure attachment to the nozzle.

Model	Thread Size		Tube Dia.		Tube Length		Weight	
	In.	mm	In.	mm	In.	mm	Lbs.	Kg
49110001	1.25 NPT	31.9	1.66	42.3	8.5	216.8	0.56	0.25
49110101	1.50 NPT	38.3	1.91	48.7	8.5	216.8	0.69	0.31
49110701	1.25 NPT	31.9	1.31	33.4	8.5	216.8	0.63	0.29
41013301	1.25	31.9	1.38	35.2	8.5	216.8	1	0.45



Dust Cap Assembly

Dust cap assembly consists of a cast aluminium cap, zinc coated chains and a phosphor bronze spring for corrosion resistance.

Model	Size		Weight	
	In.	mm	Lbs.	Kg
49510501 *	1.91	48.7	0.25	0.11
49510601 **	1.66	42.3	0.19	0.09
49511101 ***	1.12	28.6	0.19	0.09

*For use with 1.50" nozzle.
**For use with 1.25" nozzle
***For use with 1.00" nozzle.



Ground Wire Assembly

6-1/2' of preformed galvanized steel cable with a terminal eye and heavy duty battery clip..

Model	Size		Weight	
	In.	mm	Lbs.	Kg
49510701	78	1.9	0.13	0.06



Strainers

495-125 strainers are made of a six mesh brass outer screen, 100 mesh brass inner screen, two O-rings and a thrust ring. The 495-204 strainer is made of an eight mesh brass outer screen and 100 mesh brass inner screen.

Model	Size		Description	Weight	
	In.	mm		Lbs.	Kg
49512501	1.25	31.9	Brass	0.19	0.09
49520401	1	25.5	Brass	0.13	0.06
49520901	1.5	38.3	Brass	0.31	0.14



HOSE RETRIEVER SYSTEM

FLEX-ING™ brand hose retrievers are used to keep excess hose raised off the ground at sites which typically use long hoses such as truck refuelling sites. The hose retriever prevents safety hazards, kinks, tangles and prolongs the life of the hose. Combine the hose retriever with the hose retriever base plate and hose support for a complete hose retriever system.

Highlights

- Rust-resistant epoxy-coated cast iron body.
- Swivel head with 360° rotation for service in any direction and 2" NPT female inlet threads directly onto locally supplied 2" pipe.
- Hose retriever kit (HRTRVR) includes 20' of 1/8" stainless steel aircraft cable, 20 Lbs. steel counterweight, plated steel pulley, two adjustable stainless steel clamps and all necessary hardware for easy installation.
- Hose retriever base plate and hose clamp or hose support available to complete the hose retriever system.
- Installs on a locally supplied 2" pipe.
- Hose retriever base plate allows you to avoid breaking concrete for installation.

Specifications

- Head and body: Cast iron
- Cable: Stainless steel
- Base: Steel
- Recommended installation height if installed with hose retriever base plate is 10'6" maximum pipe length.
- Recommended installation height if installed without hose retriever base plate is 17' maximum pipe length with minimum of 18" buried in concrete.

Order Information

Model	Description
HRTRVR	Hose retriever kit including head with 2" NPT inlet, cable, counterweight, pulley and clamps
HRTRVRBASE	Hose retriever base plate, 2" NPT inlet
8103	¾" single hose clamp
HB100	1" hose diameter hose support
HB125	1¼" hose diameter hose support
HB150	1½" hose diameter hose support





HOSE SUPPORT

The hosebun hose support features a polyurethane saddle designed to suspend hoses while accommodating the manufacturer's minimum bend radius and protects the hose from kinking which prolongs the life of the hose.

Order Information

Model	Description
HB100	1" hose diameter hosebun hose support
HB125	1 ¼" hose diameter hosebun hose support
HB150	1 ½" hose diameter hosebun hose support



HOSE RETRACTOR

The hose retractor keeps excess conventional or vapour recovery hose raised off the ground. Mounted adjacent to the dispenser, the retractor prevents safety hazards, kinks, tangles and prolongs the life of the hose. The hose retractor features a corrosion-resistant cast aluminium body and base, two ball bearing pulleys, 3/16" Nylon retractor rope, steel counterweight and includes all necessary hardware for easy installation. The hose retractor is also available with hose clamps.

Order Information

Model	Description
HRTRTR	80" tall hose retractor, 20 lbs counterweight, 30 lbs.

Hose bun is not included with the hose retractor.



HOSE RETRIEVER

The hose retriever is used to keep excess hose raised off the ground at sites which typically use long hoses such as truck fuelling sites. Threaded onto a 17' 2" pipe (not included), the retriever prevents safety hazards, kinks, tangles and prolongs the life of the hose. The hose retriever features a rust-resistant epoxy-coated cast iron body, a swivel head with 360° rotation, 20' 1/8" stainless steel aircraft cable, 20 lbs. steel counterweight, plated steel pulley, two adjustable stainless steel hose clamps and includes all necessary hardware for easy installation.

Order Information

Model	Description
HRTRVR	37" tall hose retriever

HOSE ACCESSORIES AND SPARE PARTS



75 Series Coaxial Hose Adapters

Model	Description
CX6-A	Hose adapter, non-vapour ready, NPT
CX6-AE	Hose adapter, non-vapour ready, BSP, international only
CX6-VV3A	Hose adapter, non-vapour ready, multi-product units



75 Series Standard and Balance-Ready Healy™ Hose Breakaways

Model	Description
715VV	Repair kit for 8701VV breakaway, includes valves and O-rings
761	Nozzle end for 8701VV breakaway scuffguard
762	Dispenser end for 8701VV breakaway scuffguard
787	Nickel plated brass shear screw for 8701VV
787-1	Nickel plated brass shear screw for 807 swivel breakaway
795	Clamp repair tool for 8701VV and 807 breakaway
807	Swivel breakaway installed between hose and nozzle
8701VV	Standard hose breakaway with vapour path shut-off, 350 lbs. strength
Z055	O-ring kit for 8701VV with nickel plated shear screw

Dispenser Vapour Retrofit Kits

Model	Description
Z008	Standard for single-hose dispenser
Z009	Standard for dual-hose dispenser
Z044C	Universal for six-hose multi-product dispenser
Z046C	Universal for four-hose multi-product dispenser
Z047C	Universal for two-hose multi-product dispenser

Note: Hose adapters are not included in retrofit kits.

Hose Accessories and Spare Parts

Model	Description
516	Hose end O-ring for S4 fitting, large
1301	Hose flow limiter for 8701VV standard breakaway, installed between breakaway and main hose
1302	Hose flow limiter for 807 swivel breakaway, installed between main hose and nozzle
8103	Hose clamp, for connect to hose retractor
HB-2	Hose end O-ring for S2 fitting, large
HB-4	Vapour end quad ring (2 required per adaptor)
291	Vapour end O-ring, small (2 required per adaptor)
6094	Hose end O-ring for S3 fitting, large



HOSES AND SYSTEM ACCESSORIES



Number	Description
1	75 Series coaxial hose
2	F2F2 whip hose
3	CX6-VV3A non-vapour ready multi-product dispenser hose adapter
4	CX6-A non-vapour ready dispenser hose adapter
5	F3F2 metric-type whip hose
6	S4F2 balance-type whip hose
7	8701VV breakaway
8	807 swivel breakaway



75 Series Coaxial Hose

Manufactured with a swivel on each end to provide the ease of handling customers prefer. Inverted coaxial design reduces hose size and the steel braided, premium, abuse-resistant outer hose assures long service life and low maintenance. Available in up to 20' lengths.



F2F2 Whip Hose

Standard inverted coaxial with fixed, Healy™ thread hose ends.



CX6-VV3A Non-Vapour Ready Multi-Product Dispenser Hose Adapter

Converts a non-vapour ready high-hose multi-product dispenser to Healy's inverted coaxial hose thread.



CX6-A Non-Vapour Ready Dispenser Hose Adapter

Converts a non-vapour ready conventional dispenser thread to Healy's inverted coaxial hose thread.



F3F2 Metric-Type Whip Hose

Adapter-type whip hose allows direct connection to the metric balance hose outlet without the need for a hose adapter.



S4F2 Balance-Type Whip Hose

Adapter-type whip hose allows direct connection to the balance hose outlet without the need for a hose adapter.



8701VV Breakaway

Full product and vapour shut-off, with 350 lbs separation force. Spare shear screw allows ease of field repair in the event of a drive-off.



807 Swivel Breakaway

Breakaway and nozzle swivel in one. Allows for easier far side fuelling. Full product and vapour path shut-off, with 350 lbs separation force. Spare shear screw allows ease of field repair in the event of a drive-off.

SYSTEM TEST EQUIPMENT

Number	Description
8175	Surrogate spout assembly, for use with 700/800/900 Series nozzles
9968	Clean air separator test port assembly
2302A	Gauge kit, 1-0-1" water column
6059	Spout adapter, air/liquid ratio test, for use with 600 Series nozzle only
8034-1	Spout adapter, air/liquid ratio test, for use with 700/800/900 Series nozzles only
8175-1	Surrogate spout assembly including 8034-1, for use with 700/800/900 Series nozzles only
939349A	Gauge kit, 0-100" water column
Z076	Roots™ meter package, 600 Series nozzle, includes Dresser Roots™ vapour recovery meter, flange kit, 1½" NPT × ½" NPT reducer, 6' × ¾" hose, 600 Series nozzle spout adapter and two ½" NPT × ¾" hose barb fittings
Z077	Roots™ meter package, 700/800/900 ORVR nozzle, includes Dresser Roots™ vapour recovery meter, flange kit, 1½" NPT × ½" NPT reducer, 6' × ¾" hose, ORVR nozzle spout adapter and two ½" NPT × ¾" hose barb fittings
63034	O-ring, for 8034-1 spout adapter



DURADEF™ NOZZLE WITH MIS-FILL SPOUT FOR DEF/ADBLUE®

The FLEX-ING™ brand DuraDEF™ nozzle features a specially encapsulated aluminum casting which is lightweight yet completely DEF/AdBlue® compatible. It provides the performance and construction specifications required for DEF/AdBlue® delivery in a familiar, user-friendly design. This nozzle features a mis-fill prevention spout that prevents DEF from being dispensed unless the spout is engaged with a mis-fill prevention device (MPD). The MPD is available separately.

Highlights

- High strength aluminum body and stainless steel spout.
- Protective vinyl scuff guard.
- Available with or without hold-open clip.
- Spout designed for use with mis-fill prevention device.
- Internal components are manufactured from stainless steel or plastic for full DEF/AdBlue® compatibility.
- Sealed in a plastic bag to ensure no contamination.
- Meets all required specifications set by ISO 22241 for DEF/AdBlue® delivery.
- Mis-fill device available separately.

Specifications

- Inlet: 3/4" BSPP
- Spout: 19mm stainless steel
- Seals and poppet disc: Viton® A
- Packing: PTFE
- Weight / length / height: 2.5 Lbs. / 13.5" / 9"
- Body casting: Coated aluminium
- Handguard and vac cap: Nylon
- Lever: Electroless nickel plated steel & nylon
- Scuff guard: Vinyl
- Body cap: Coated zinc

Order Information

Model	Description
DURADEF-MPD	DuraDEF nozzle with mis-fill prevention spout, hold-open clip, light blue scuff guard
DURADEF-MPD-O	DuraDEF nozzle with mis-fill prevention spout no hold-open clip, light blue scuff guard
DEF-MPD	Mis-fill prevention device for 3/4" spout





DURADEF™ NOZZLE FOR DEF/ADBLUE®

The FLEX-ING™ brand DuraDEF™ nozzle features a specially encapsulated aluminium casting that makes it lightweight yet completely compatible with DEF (Diesel Exhaust Fluid)/AdBlue®. This nozzle provides the performance and construction specifications required for DEF/AdBlue® delivery with a lightweight, more user-friendly design.

Highlights

- High strength aluminium body and stainless steel spout.
- Protective vinyl scuff guard available in green, yellow, red, blue, black and light blue to match station branding.
- Available with or without hold-open clip.
- Internal components are manufactured from stainless steel or plastic for full DEF/AdBlue® compatibility.
- Sealed in a plastic bag to ensure no contamination.
- Meets all required specifications set by ISO 22241 for DEF/AdBlue® delivery.

Specifications

- Inlet: 3/4" BSPP
- Spout: 19mm stainless steel
- Seals and poppet disc: Viton® A
- Packing: PTFE
- Weight / length / height: 2.5 Lbs. / 13.5" / 9"
- Body casting: Coated aluminium
- Handguard and vac cap: Nylon
- Lever: Electroless nickel plated steel & nylon
- Scuff guard: Vinyl
- Body cap: Coated zinc

Order Information

Ordering Guide

FLDEF A B C D - E - F

- FLDEF = DEF/AdBlue® Hose
- B = Hose Diameter
 - 02 = 3/4"
- C = Hose Length Feet
 - Use three-digit format
- D = Hose Length Inches
 - Use two-digit format
- E & F = End Fitting Options
 - 2N = 3/4" NPT
 - 2P = 3/4" BSPP
 - 3P = 1" BSPP

Model	Description
DURADEF-LB	Light Blue DuraDEF nozzle with locking clip
DURADEF-LB-O	Light Blue DuraDEF nozzle without locking clip





HOSE FOR DEF/ADBLUE®

FLEX-ING™ brand diesel exhaust fluid hose features a specially formulated low-extraction EPDM rubber tube making it completely compatible with DEF/AdBlue®. The flexible softwall construction provides superior handling for both standard and reel applications. Each curb hose length features dual anti-kink sleeves at each end to protect the hose from accelerated wear and kinking. The anti-kink sleeves are factory installed over the end fitting ferrule to ensure maximum wear protection.

Highlights

- Peroxide cured tube provides superior extraction levels and significantly reduces contamination.
- Premium polyester braided construction reduces volumetric expansion.
- Integrated static wire.
- All curb hoses over 2' in length are outfitted with factory installed anti-kink sleeves on both ends.
- BSPP outlets include a fluoroelastomer flat seal to ensure compression tightness.

Specifications

- Tube: Specially formulated low-extraction EPDM rubber, peroxide cured
- Reinforcement: Polyester braid
- Cover: Specially formulated EPDM
- Temperature: -40 °F to 257 °F (-40 °C to 125 °C)

Approvals

- Meets ISO 22241 standard ensuring desirable characteristics of AUS 32 (DEF) are met, such as quality, safety, reliability and contamination.

Order Information

Ordering Guide

FLDEF A B C - D - E

- FLDEF = DEF/AdBlue® Hose
- A = Hose Diameter
 - 2 = ¾"
- B = Hose Length Feet
 - Use three-digit format
- C = Hose Length Inches
 - Use two-digit format
- D & E = End Fitting Options
 - 2N = ¾" NPT
 - 2P = ¾" BSPP
 - 3P = 1" BSPP
 - 3PF = 1" BSPP Female Swivel

Example: FLDEF200906-2N-2N = Def/Adblue® hose, ¾" diameter, 9 feet 6 inches length, ¾" NPT fitting on both ends.





BREAK AWAY FOR DEF/ADBLUE®

FLEX-ING™ brand diesel exhaust fluid ¾" break aways provide in-line protection for hanging hardware in the event of a drive off. These break aways feature a stainless steel design and internal components that make them completely compatible with DEF/AdBlue®. Upon separation the check valve in each half of the break away seals instantly, preventing fuel from escaping at both ends.

Highlights

- Consistent separation force.
- The ball check valves seal both halves of the break away instantly upon separation.
- Machined from solid stainless steel bar stock.
- The two halves of the break away are sealed before the check valves open creating a completely dry break.

Specifications

- Body and valve: Stainless steel
- Check valve: PTFE
- Seals: Viton
- Ring cover: Nylon (integrated)
- Max. working pressure: 50 PSI
- Break rings break force: 325 lbs.
- Height: 3.25"

Order Information

Model	Description
BRK34SS-N	¾" NPT DEF break away
BRK34SS-P	¾" BSPP DEF break away



SWIVEL BREAK AWAY

FOR DEF/ADBLUE®

FLEX-ING™ brand diesel exhaust fluid swivel break aways provide in-line protection for hanging hardware in the event of a drive off. These break aways feature a stainless steel body that makes them extremely durable and completely compatible with DEF/AdBlue®. The break away design ensures proper drive-off protection and allows for easy installation directly between the nozzle and hose. The integrated swivel action provides easy nozzle rotation during vehicle filling while also helping to reduce hose wear and kinking.

Highlights

- High strength stainless steel body with internal components that are completely compatible with DEF/AdBlue®.
- Break away valves separate with axial or up to 30° angular force.
- Fluid release limited to less than 10 ml upon break away valve separation.
- Atmospheric inner seal protects from corrosion.
- Integrated swivel action provides easy nozzle rotation during vehicle filling while also helping to reduce hose wear and kinking.
- Available with either ¾" NPT and ¾" BSPP nozzle outlet and standard 1" BSPP female inlet.
- BSPP nozzle outlet includes a fluoroelastomer flat seal to ensure compression tightness between the break away and the nozzle inlet.

Specifications

- Body: Stainless steel
- Separation force: Between 180 Lbs. and 340 Lbs. force (800 N and 1,500 N force)
- Temperature rating: -22 °F to 131 °F (-30 °C to 55 °C)
- Internal pressure: Factory tested to 76.8 PSI (5.3 bar)
- Electric conductivity: Factory tested to < 100k Ohm
- Nozzle flow rate compatibility: Up to 21 gpm (80 lpm)
- Working pressures compatibility: 0.5 bar up to 3.5 bar

Order Information

Model	Description
OMNIDEF1X34N	¾" NPT nozzle outlet, 1" BSPP female inlet DEF swivel break away
OMNIDEF1X34P	¾" BSPP nozzle outlet, 1" BSPP female inlet DEF swivel break away
OMNIDEF1PXM34	M34 (metric) nozzle outlet, 1" BSPP female inlet DEF swivel break away



If you wish to contact us about any of our products or services please contact the nearest Franklin Fueling Systems office.

For a list of local contacts please visit franklinfuelling.com for more information.

US and Canada

Franklin Fueling Systems
3760 Marsh Rd.
Madison, Wisconsin
53718, USA
T: +1 800 225 9787
F: +1 608 838 6433

UK

Franklin Fueling Systems Limited
Olympus Close, Whitehouse Industrial Estate,
Ipswich, Suffolk,
IP1 5LN, UK
T: +44 (0)1473 243 300
F: +44 (0)1473 243 301

Europe

Franklin Fueling Systems GmbH
Rudolf-Diesel-Str. 20,
54516, Wittlich,
Germany
T: +49 6571 105 380
F: +49 6571 105 510

Australia

Franklin Fueling Systems Australia
21 Aristoc Road - PO Box 47
Glen Waverley, Vic 3150
Australia
T: +61 3 9550 1874
F: +61 3 95 61 94 77

China

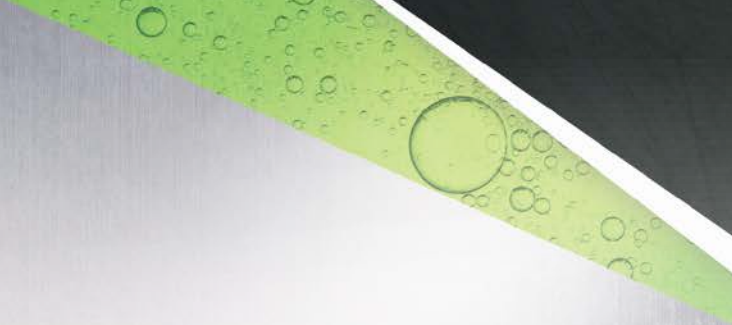
Franklin Fueling Systems (Beijing) Co., Ltd
A802, ChaoWaiMEN Centre, No. 26 Chaowai Street,
Chaoyang District,
Beijing 100020, China
T: +86 10 8565 4566
F: +86 10 8565 4766

India

Franklin Wadcorpp Pvt Ltd
C-10 / 1 Ranjangoan MIDC
Industrial Area, Tal. Shirur
Dist. Pune - 412220
T: +91 (0) 2138 610900

Brazil

Franklin Fueling Sistemas de Combustáveis Ltda
Rua Hans Dieter Schmidt, 1.501
Zona Industrial Norte
Joinville, Santa Catarina, Brazil, 89219-504
T: +55 0800 710 0300







TOTAL SYSTEM

S O L U T I O N S



Franklin Fueling Systems

franklinfueling.com

Franklin Fueling Systems GmbH
Rudolf-Diesel-Str. 20, 54516 Wittlich, Germany
Tel: +49-6571-105-380 • Fax: +49-6571-105-510
US/Can: +1 800 225 9787 • Mex: 001 800 738 7610
UK: +44 (0)1473 243300 • CN: +86 10 8565 4566



FFS-0439 DS 4-17

Global Product Catalogue