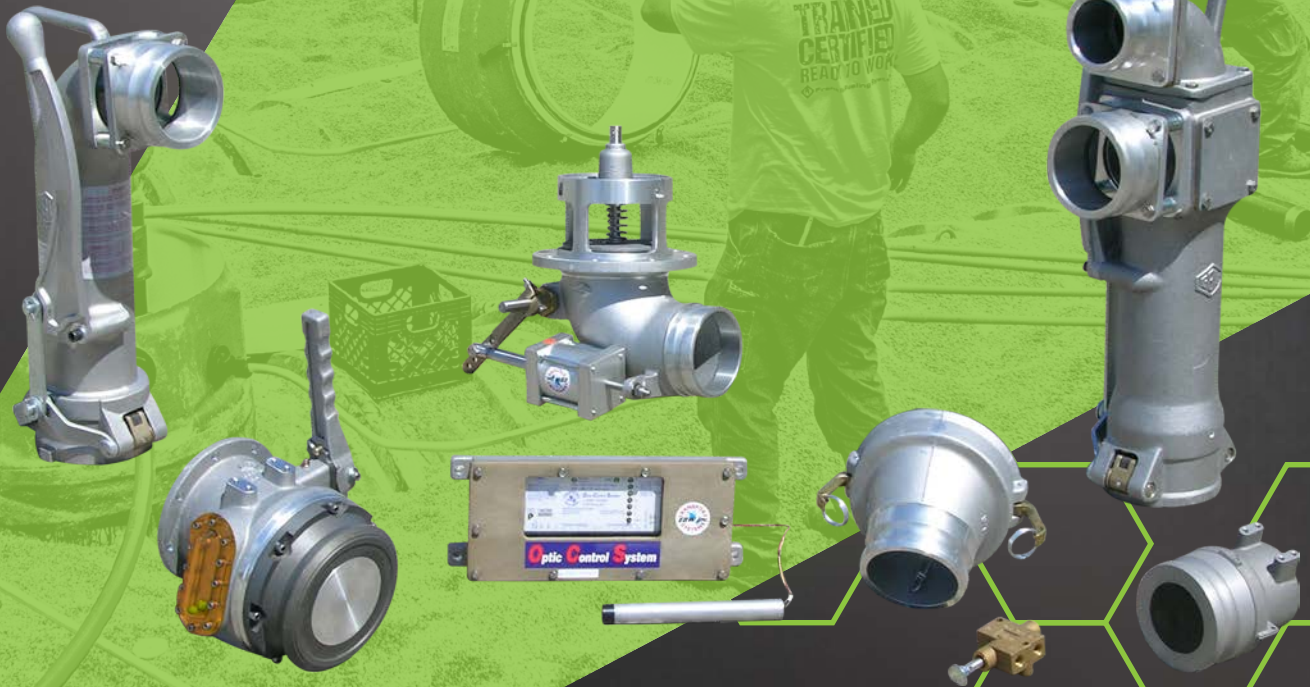


2 0 1 7

PRODUCT CATALOGUE

TRANSPORT SYSTEMS

 Franklin Fueling Systems



CREATE EFFICIENCIES SPEED INSTALLATIONS REDUCE COSTS



Our product systems are designed to create efficiencies and user benefits beyond those of standalone products. Check out these examples of how our system solutions can help your business.

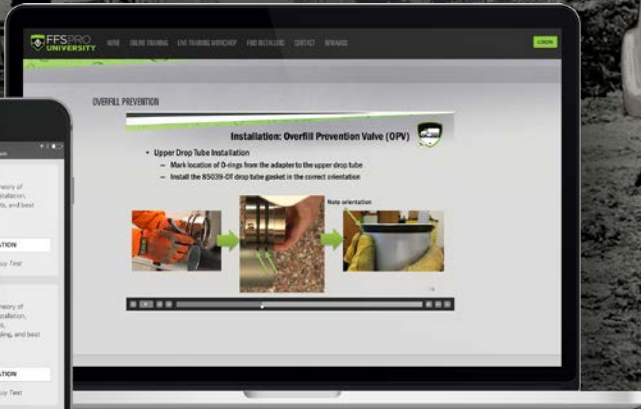
TOTAL SYSTEM
SOLUTIONS

go.franklinfueling.com/total-system-solution



Franklin Fueling Systems

TRAINED CERTIFIED READY TO WORK



Introducing the industry's premier training, certification, and resource tool for installation professionals. FFS PRO: University is your go-to source for installation safety education, best practices, and product training. It's about being safe. It's about staying educated. It's about getting the job done right.



university.ffspro.com

WORK JUST GOT A LITTLE EASIER



It's a handy quick reference tool full of all the calculations and install tips installers need on the job site - plus plenty of pages for their own notes. What's more, it's completely FREE - no sign-up form, no strings. Just go to our Literature Order Page and we'll send them to you.

go.franklinfueling.com/forecourt-guide

 **Franklin Fueling Systems**

QUOTE LIKE A PRO



 **FFS PRO**
SITE BUILDER

Introducing the industry's most powerful quoting tool. Our new FFS PRO: Site Builder will have you quoting a complete site like a pro in no time. The intuitive user interface guides you through the process of quoting a site including a full bill of materials, pricing, and a site drawing.

About Us

Total System Solution

Transport Systems

Fuel and Vapour Transfer Solutions

API Bottom Loading Adapters

Adapters

Dust Cap

Air Interlock Valves

Three-Way Air Valves

Six-Way Air Valves

Air Interlock with Limit Switch

Gravity Drop Adapters

Male and Female

Vapour Check Valves

Threaded

Flanged

Emergency Valves

Mechanically Operated 90 Degree Emergency Valve

Air Assisted 90 Degree Emergency Valve (Victaulic™)

3" Emergency Valve

9 Product Drop Elbows

10 Product Drop Elbows

12 Dual Point Vapour Recovery Elbow

13 Coaxial Delivery Elbow

15 Optic Control System

15 Two-Wire Controller

17 Two-Wire Optic Overfill Probes

18 Single Socket Solutions

18 Probe Holder Solutions

20 Installation Kits

21 Wiring Kits

22 Transport Systems

22 Vapour Caps

Vapour Return Hose Couplers

23 Air-Operated Sequential Vapour Valves

23 Hose Tube Doors

24 Attachments

25 Side Seal Adaptor

27 Contact Us

28

29

29

31

32

33

33

33

34

34

35

35

36

36

37

38

39

40

41

42

ABOUT US



Welcome to Franklin Fueling Systems, the world's leading provider of complete fuelling systems.

We are comprised of the industry's most extensive lines of fuelling product solutions. With us, you can get the most comprehensive product offering from the industry's leader in total system solutions.

Franklin Fueling Systems provides unparalleled simplicity in placing one order, having one point of contact, relying on one service team and receiving one consolidated shipment.

A wide variety of products, a world class customer service experience and extensive technical background create a complete system solution where our services, features and products set us apart as the industry leader.

Whether you want to automate your station or network, build or re-build your station according to the latest environmental laws, update a station to fulfill new regulations or intend to realize a more cost efficient site construction and operation, you can rely on Franklin Fueling Systems. Our submersible pumping systems, service station hardware, fuel management systems and complete pipework solutions can increase your efficiency and improve your business.

In addition to the industry's most comprehensive product offering,

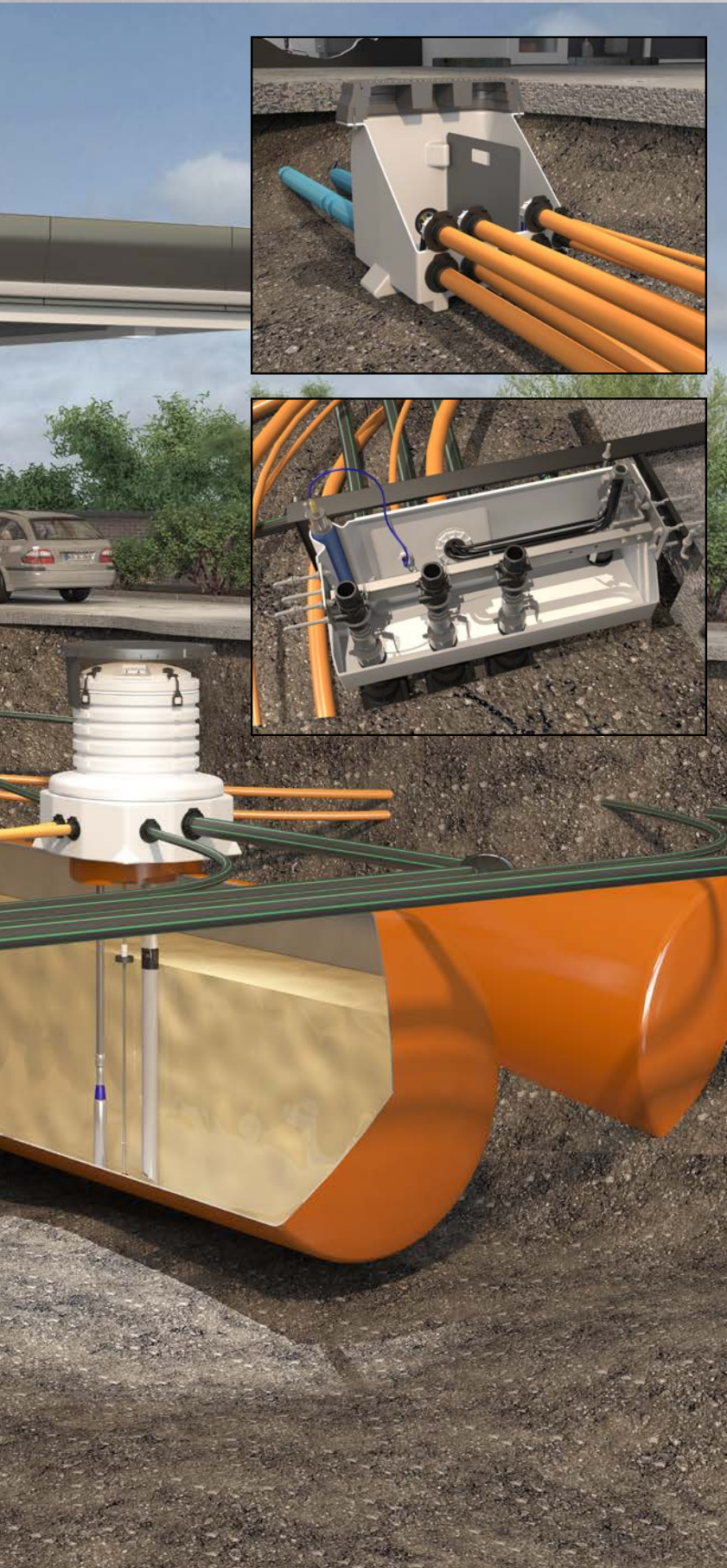
Franklin Fueling Systems also provides:

- One order for all equipment
- Factory tested leak-tight equipment
- Reduced site downtimes
- 100% Bio-fuel compatible options
- Effective control of your fuel stocks
- Ensured environmental protection
- Solutions to keep fuel in and water out
- Lowest total cost of ownership
- Time and money savings

Franklin Fueling Systems can deliver a complete package of pipework, manhole chambers, under dispenser containment, submersible pumps and intelligent fuel stock & environmental monitoring systems all designed around your exact needs and delivered in one shipment, ready for installation.

TOTAL SYSTEM SOLUTION





Fuel Management Systems

Franklin Fueling Systems offers a complete line of inventory monitoring systems, providing users the capability to take complete control of fuel management. The complete range is ideal for monitoring inventory, environmental control and fuel management. Next generation technology from INCON® allows users to monitor tanks from any web browser.

Submersible Pumping Systems

Franklin Fueling Systems submersible pumping systems provide faster fuel dispensing, improved efficiency and unmatched reliability. The FE Petro® brand industry-leading product design offers the highest performing submersible pumping systems available.

Piping and Containment

Franklin Fueling Systems offers the most comprehensive line of piping and containment products in the industry. The UPP® brand features innovative technology and outstanding quality. With 30 years' worth of installations and a 100% leak-free performance record, Franklin Fueling Systems is the leading provider of fuel pipe.

Dispensing Systems

Franklin Fueling Systems manufactures and markets a complete line of Stage II vapour recovery systems globally under the Healy™ product brand. Healy™ vapour recovery products suit any application and customise to any site, ensuring proper connection.

Service Station Hardware

Franklin Fueling Systems fuel station hardware products comprise a comprehensive and environmentally friendly system, including a complete biofuel approved system for E85 and biodiesel sold under the brands EBW® and Phil-Tite.

Transport Systems

Franklin Fueling Systems road tanker systems products make it easy to connect to loading terminals and underground storage tanks with our broad line of adapters, elbows and valves. Sold under the brand EBW®, these products cover both loading and off-loading applications. Our road tanker hardware products provide a wide range of connection options.

DEF/AdBlue®

Franklin Fueling Systems offers a complete system of Diesel Exhaust Fluid (DEF) or AdBlue® compatible products all from a single manufacturer. Our system is designed together – to work together, resulting in unmatched system performance and an energy efficient means of keeping DEF from freezing at low temperatures.

TRANSPORT SYSTEMS

Our product line is comprised of a broad range of equipment for both loading and off-loading applications. Connecting to loading terminals and underground storage tanks is made easy with a extensive line of FFS adapters, elbows, and valves.



Highlights



For Every Requirement a Solution

Franklin Fueling Systems Tank Transport Systems product line is comprised of an extensive line of products for both loading and off loading applications. Connecting to loading terminals and underground storage tanks is made easy with a broad line of FFS adapters, elbows, and valves.



Fuel Loading and Off-loading Management

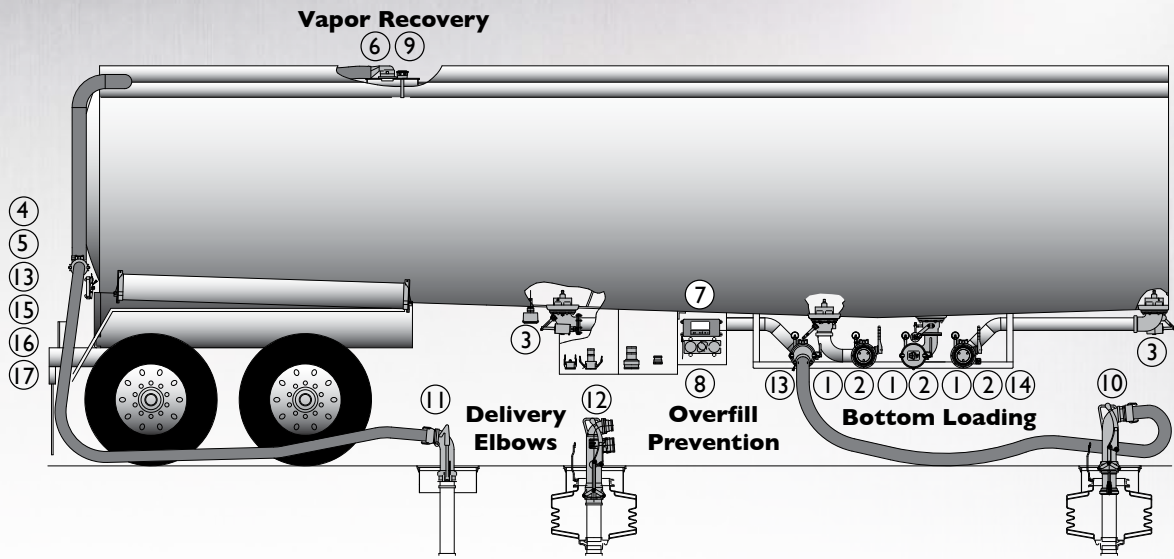
Loading and off-loading fuel from a transport truck is easier than ever with the bottom loading adapters from Franklin Fueling Systems. While loading, the free floating poppet opens under pressure allowing the handle to remain in the closed position. This minimises spillage caused by leaving the handle in the open position when disconnected from the bottom loader



Product Drop and Vapour Recovery

FFS has the solution to handle any product drop or vapour recovery situation. Preventing overfills at the loading rack is a top priority to any transporter. The FFS Optic Control Overfill Protection System (OCS) is designed to prevent such overfills and is compatible with all existing racks and monitors. A full line of nozzles compliment the system along with specialty items including Pressure Relief Valves, Hose Tube Doors and Side Seal Adapters. Each component of the Tank Transport System is designed and manufactured to work in even the toughest of environments.

FUEL AND VAPOUR TRANSFER SOLUTIONS



Bottom Loading

| No. | Model | Description |
|-----|----------|---|
| 1 | 88050002 | API adapter, short stroke three position, no sight glass |
| 1 | 88050004 | API adapter, short stroke three position, 3" bubbled sight glass |
| 1 | 88050005 | API adapter, short stroke three position, 3" bubbled sight glass, no handle |
| 1 | 88050007 | API adapter, short stroke three position, no sight glass, removable handle |
| 2 | 88033001 | Female gravity drop adapter |
| 2 | 88041101 | Male gravity drop adapter |
| 3 | 88043001 | Mechanically-operated 90 degree emergency valve (Victaulic™) |
| 3 | 88043201 | Air assisted 90 degree emergency valve (Victaulic™) |

Vapour Recovery

| No. | Model | Description |
|-----|----------|---|
| 4 | 30130001 | 3" N.P.S.M. vapour recovery adapter with poppet |
| 4 | 30344404 | 4" N.P.S.M. vapour recovery adapter, no poppet |
| 5 | 30230011 | Flanged vapour check valve |
| 6 | 88034301 | Air-operated sequential vapour valve |

Overfill Prevention

| No. | Model | Description |
|-----|----------|-------------------------|
| 7 | 89040002 | 2-wire controller |
| 8 | 90822101 | Optic socket |
| 9 | 89011001 | Optic probe, 2-wire, 8" |

Product Drop Elbows

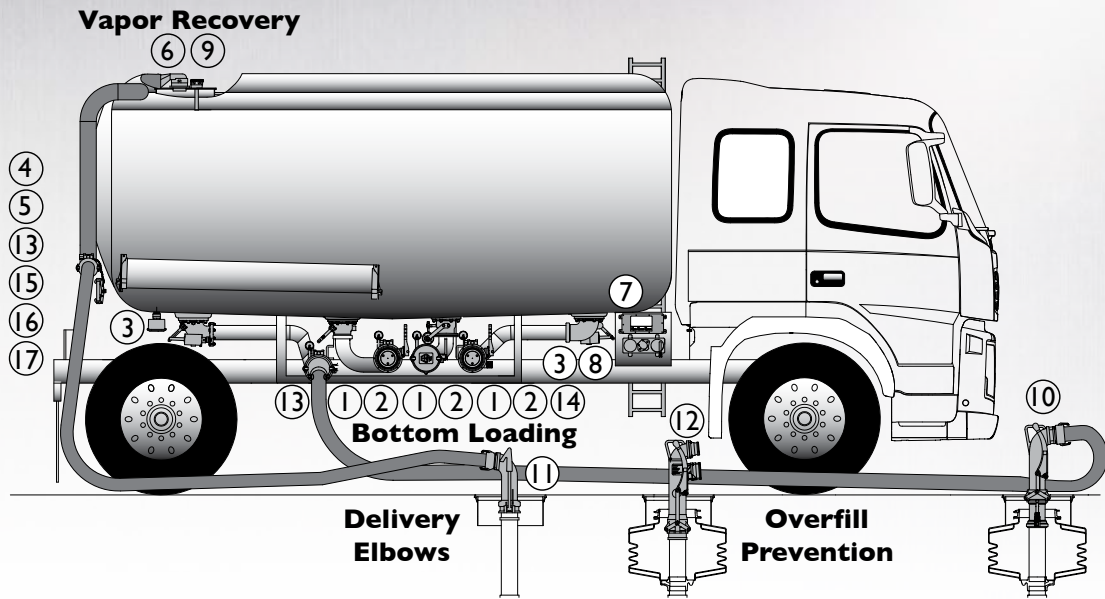
| No. | Model | Description |
|-----|----------|--|
| 10 | 88049302 | Product drop elbow with cam and groove adapter and sight glass |
| 10 | 88045501 | Product drop elbow with sight glass |
| 11 | 88046501 | Dual point vapour recovery elbow |
| 12 | 88049001 | Coaxial delivery elbow |

Accessories

| No. | Model | Description |
|-----|----------|--|
| 13 | 88015001 | Three-way air interlock valve |
| 13 | 88015002 | Three-way air interlock valve with roller top |
| 13 | 88015003 | Three-way air interlock valve with offset actuator |
| 14 | 88040301 | API adapter dust cap |
| 15 | 30420005 | Vapour cap with chain-chevroned gasket |
| 16 | 77432002 | Vapour return hose coupler |
| 17 | 78430003 | Hose tube door |



FUEL AND VAPOUR TRANSFER SOLUTIONS



Bottom Loading

| No. | Model | Description |
|-----|----------|---|
| 1 | 88050002 | API adapter, short stroke three position, no sight glass |
| 1 | 88050004 | API adapter, short stroke three position, 3" bubbled sight glass |
| 1 | 88050005 | API adapter, short stroke three position, 3" bubbled sight glass, no handle |
| 1 | 88050007 | API adapter, short stroke three position, no sight glass, removable handle |
| 2 | 88033001 | Female gravity drop adapter |
| 2 | 88041101 | Male gravity drop adapter |
| 3 | 88043001 | Mechanically-operated 90 degree emergency valve (Victaulic™) |
| 3 | 88043201 | Air assisted 90 degree emergency valve (Victaulic™) |

Vapour Recovery

| No. | Model | Description |
|-----|----------|---|
| 4 | 30130001 | 3" N.P.S.M. vapour recovery adapter with poppet |
| 4 | 30344404 | 4" N.P.S.M. vapour recovery adapter, no poppet |
| 5 | 30230011 | Flanged vapour check valve |
| 6 | 88034301 | Air-operated sequential vapour valve |

Overfill Prevention

| No. | Model | Description |
|-----|----------|-------------------------|
| 7 | 89040002 | 2-wire controller |
| 8 | 90822101 | Optic socket |
| 9 | 89011001 | Optic probe, 2-wire, 8" |

Product Drop Elbows

| No. | Model | Description |
|-----|----------|--|
| 10 | 88049302 | Product drop elbow with cam and groove adapter and sight glass |
| 10 | 88045501 | Product drop elbow with sight glass |
| 11 | 88046501 | Dual point vapour recovery elbow |
| 12 | 88049001 | Coaxial delivery elbow |

Accessories

| No. | Model | Description |
|-----|----------|--|
| 13 | 88015001 | Three-way air interlock valve |
| 13 | 88015002 | Three-way air interlock valve with roller top |
| 13 | 88015003 | Three-way air interlock valve with offset actuator |
| 14 | 88040301 | API adapter dust cap |
| 15 | 30420005 | Vapour cap with chain-chevroned gasket |
| 16 | 77432002 | Vapour return hose coupler |
| 17 | 78430003 | Hose tube door |





ADAPTERS

Loading and off-loading fuel from a transport truck is easier than ever with the bottom loading adapters from Franklin Fueling Systems. While loading, the free floating poppet opens under pressure allowing the handle to remain in the closed position. This minimises spillage caused by leaving the handle in the open position when disconnected from the bottom loader. The adapter handle is offered in aluminium or nylon and provides two open positions of flow allowing the delivery driver to manage the flow rate while off-loading fuel from the truck.

The lightweight, heavy-duty adapter is engineered and tested to meet API RP 1004 specifications. The outer end is made of hard coated aluminium and rotates seven times to maximise the products life and prevent wear that can be caused by terminal off-loading couplings. The inner wall of the adapter is

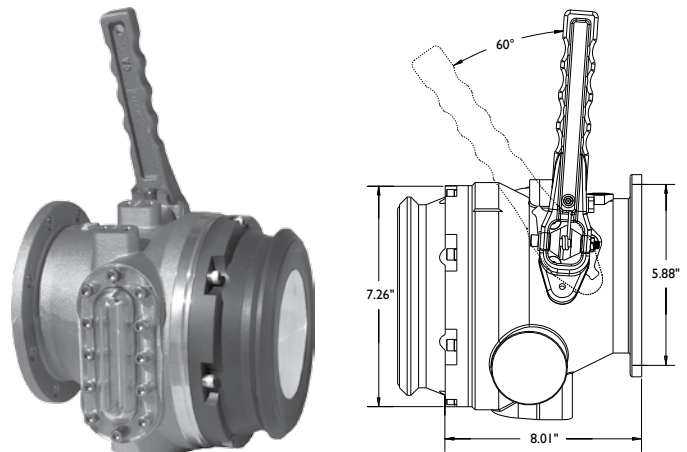
fully tapered, minimising product retention inside of the valve when off loading is complete. Each model is compatible with all API dry disconnect couplers and are constructed with a standard TTMA 4" tank truck flange and mounting lugs for FFS air interlock valves. Sight glass options are mounted on the side of the valve to maximise visibility during fuel transfer and are available in 1" and 3.5" sizes. Fuel loading and off loading management has never been easier, safer or more efficient.

Highlights

- Long Life - Front API head may be rotated up to seven times to maximise the life of the adapter.
- Long Life - Enhanced 3.5" sight glass provides greater impact strength and is compatible with Biofuels including E85 and Biodiesel.
- Safety - Free floating poppet is opened by pressure from the terminal adapter probe to minimise spills during loading.
- Speed of Delivery - The cam design utilised to retract the adapter poppet minimises product flow restriction during off loading and loading.

Order Information

| Model | Description |
|----------|---|
| 88050002 | Short stroke three position, no sight glass |
| 88050004 | Short stroke three position, 3.5" sight glass |
| 88050005 | Short stroke, three position, no handle, 3" sight glass |
| 88050007 | Short stroke, removable handle, no sight glass |
| 88012001 | Dust boot air cylinder |
| 88050701 | Replacement poppet kit with handles |
| 88050702 | Replacement poppet kit for bottom loaders with handles |



Order Information - continued

| Description | Part | 880-500 Model |
|---------------------------------------|----------|---------------|
| Poppet head | 88050901 | -02, -04, -07 |
| Spring, poppet | 88012701 | -02, -04, -07 |
| O-ring | 1103938 | -02, -04, -07 |
| Washer, flat, 5/8" ID | 88019101 | -02, -04, -07 |
| Latch dual | 88050601 | -02, -04, -07 |
| Cam, loading arm | 88021501 | -02, -04, -07 |
| Roller, cam | 88019001 | -02, -04, -07 |
| Pin, roller cam | 88018901 | -02, -04, -07 |
| Hex, permanent handle | 88019801 | -02, -04 |
| Spring, handle | 88010201 | -02, -04 |
| Handle, dual latching | 88050501 | -02, -04 |
| Handle, dual latching (Canada) | 88050503 | -7 |
| Pin, latch | 88019201 | -02, -04, -07 |
| O-ring, cross shaft | 1103912 | -02, -04, -07 |
| Pin, 3/16", spiral | 1108604 | -02, -04, -07 |
| Cap screw, socket head 1/4-20 x 2" | 1117016 | -02, -04 |
| Locknut, 1/4-20 | 1104105 | -02, -04 |
| Cap screw, socket head, 10-24 x 5/8" | 1103010 | -02, -04, -07 |
| Sight glass, 1" bubble | 88051101 | -3 |
| Sight glass, 3.5" bubble | 88051201 | -4 |
| Cap screw, socket head, 1/4-20 x 3/4" | 1117017 | -04 |
| O-ring, sight glass, 1" bubble | 1103936 | -3 |
| O-ring, sight glass, 3.5" bubble | 1103937 | -4 |
| Ball, flow indicator, 3/8", green | 88012402 | -3 |





DUST CAP

This lightweight API Dust Cap shields valuable bottom loading valves from destructive outside elements. The cap easily couples on all EBW® API bottom loading adapters using a reliable Buna-N gasket. The corrosion-resistant cap comes with forged brass cam arms and a heavy-duty attachment chain. This Dust Cap also meets API RP 1004 Specifications.

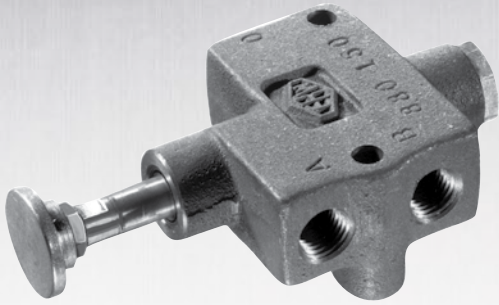
Specifications

| Model Unit | 880-403-01 | 88020601 |
|-------------|------------|----------|
| Description | Dust Cap | Gasket |
| Inches | 4 | 4 |
| Millimetres | 101.6 | 101.6 |
| Pounds | 3.06 | — |
| Kilograms | 1.39 | — |

Order Information

| Part | Description |
|------------|-------------------------------------|
| 880-403-01 | API Bottom Loading Adapter Dust Cap |
| 880-206-01 | API Bottom Loading Adapter Gasket |





THREE-WAY AIR VALVES

Play it safe with this lightweight valve that locks up the brakes on the trailer, preventing it from leaving the loading rack while connected to the loading arm. This three-way air valve can be used normally open or normally closed, has an adjustable stem, and comes with standardised TTMA and API mounting holes. The anodized aluminium valve is used on all API bottom loading adapters and all Vapour Check Valves.

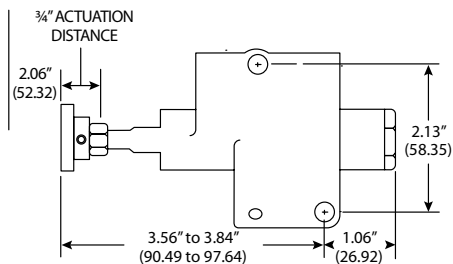
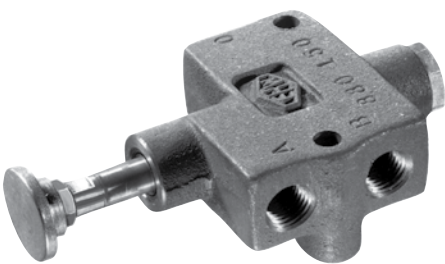
Highlights

- Heat-treated, anodized aluminium construction.
- 1/4" NPT connection ports.
- Field serviceable.
- Adjustable stem button.

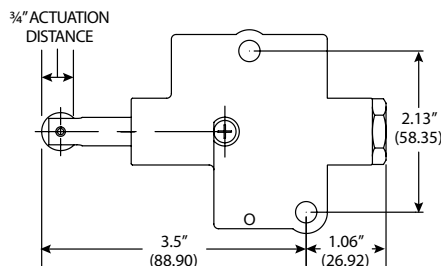
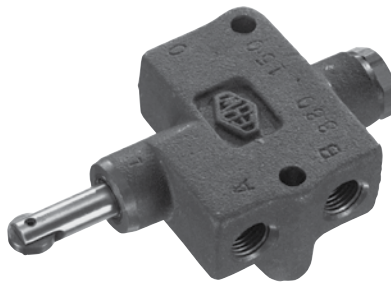
Specifications

| Model Unit | 88015001 | 88015002 | 88015003 |
|-----------------------------|-------------|-------------|-------------|
| Width (Inches/Millimetres) | 3.00/76.2 | 3.00/76.2 | 3.00/76.2 |
| Length (Inches/Millimetres) | 4.25/107.96 | 4.25/107.96 | 4.25/107.95 |
| Pounds | 0.69 | 0.69 | 0.69 |
| Kilograms | 0.31 | 0.31 | 0.31 |

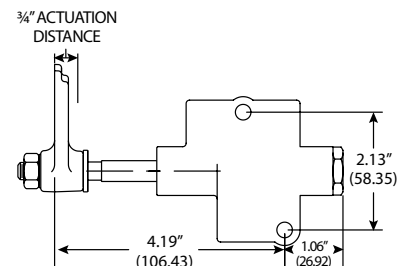
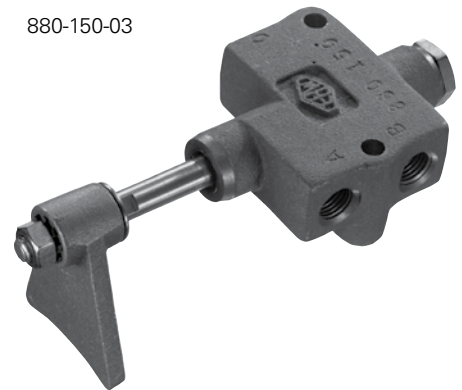
880-150-01



880-150-02



880-150-03



Order Information

| Part | Description |
|----------|--|
| 88011301 | Screw Adjustor Assembly 1.5" Button |
| 88015001 | Three-way Air Interlock Valve |
| 88015002 | Three-way Air Interlock Valve, Roller Tip |
| 88015003 | Three-way Air Interlock Valve, Offset Actuator |

| Part Name | Qty. Req. | | | 880500 Model |
|-------------------------------------|-----------|-----|-----|--------------|
| | -01 | -02 | -03 | |
| Plug - Nut | 1 | 1 | 1 | 88014501 |
| Spring | 1 | 1 | 1 | 88014801 |
| Spool & O-ring Assembly | 1 | 0 | 1 | 88017101 |
| Retaining Ring | 1 | 1 | 1 | 1109004 |
| Dust Seal | 1 | 1 | 1 | 88014201 |
| Screw Adjuster 1.0* | 1 | 0 | 0 | 88014401 |
| Screw ¼-20 × 1.75" Hex Head | 2 | 2 | 2 | 1106307 |
| Spool & O-ring Assembly, Roller Tip | 0 | 1 | 0 | 88017102 |
| Actuator - Offset | 0 | 0 | 1 | 88112001 |
| 880-150-01 Service Kit* | 1 | 0 | 0 | 90012 |
| 880-150-02 Service Kit** | 0 | 1 | 0 | 90055 |
| 880-150-03 Service Kit*** | 0 | 0 | 1 | 90056 |

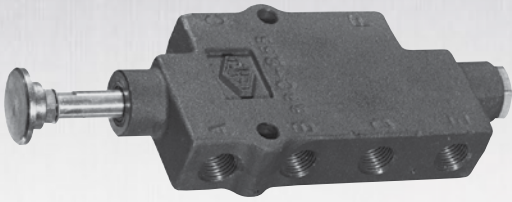
* Note: Service Kit includes: (1) #3, (1) #4, (1) #5, (1) #6, (1) #7, (1) #8, (1) #12

**Note: Service Kit includes: (1) #3, (1) #5, (1) #6, (1) #14, (1) #15, (1) #16, (1) #17

***Note: Service Kit includes: (1) #3, (1) #5, (1) #6, (1) #18, (1) #19, (1) #20, (1) #21, (1) #22



SIX-WAY AIR VALVES



These air interlock valves were designed to operate two different air systems at the same time. The lightweight valves are designed to lock the trailer brakes and open the air operated vapour valve at the same time. These six-way air valves can be used in the normally open (N/O) and normally closed (N/C) configurations of N/O, N/C, or N/O, N/O, or N/C, N/C positions. They have an adjustable stem and come standard with TTMA and API mounting holes.

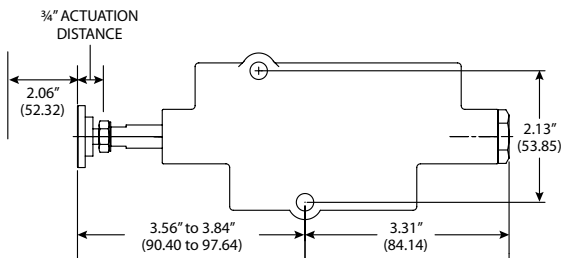
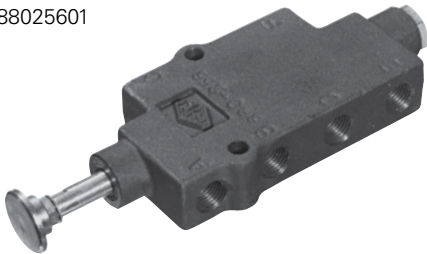
Highlights

- Heat-treated, anodized aluminium construction.
- ¼" NPT connection ports.
- Field serviceable.
- Adjustable stem button.

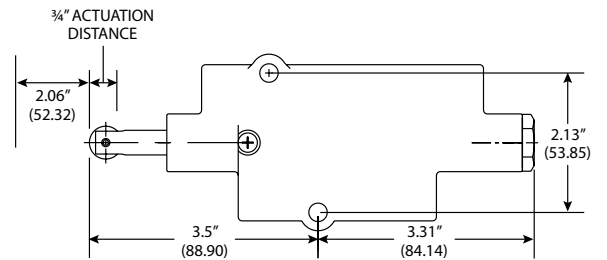
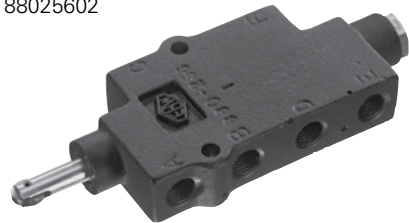
Specifications

| Model Unit | 88025601 | 88025602 | 88025603 |
|----------------------------|-----------|-----------|-----------|
| Width (Inches/Millimetres) | 3.00/76.2 | 3.00/76.2 | 3.00/76.2 |
| Pounds | 0.69 | 0.69 | 0.69 |
| Kilograms | 0.31 | 0.31 | 0.31 |

88025601



88025602



Order Information

| Part | Part Name |
|----------|--------------------------------------|
| 88025601 | ¼" - 1" Button Six-way Air Valve |
| 88025602 | ¼" - 1" Roller Tip Six-way Air Valve |
| 88025603 | ¼" - 1" Duckfoot Six-Way Air Valve |
| 90020 | Service kit for 880-256-01 |
| 90059 | Service kit for 880-256-02 |

| Part | Description |
|------------|-------------------------|
| 880-145-01 | Plug - Nut |
| 880-148-01 | Spring |
| 880-258-01 | Spool & O-ring Assembly |
| 11090-04 | Retaining Ring |
| 880-142-01 | Dust Seal |



AIR INTERLOCK WITH LIMIT SWITCH



Ensure proper vapour recovery every time by using the Air Interlock with Limit Switch. With the limit switch, bottom loading cannot begin until a vapour recovery hose is connected to the vapour check valve. The switch does its job by breaking a connection in the secondary over-fill prevention system, thus preventing the rack monitor from giving a green light to the transport. Once a vapour line is connected, loading can begin. The coupler first depresses the plunger button of the interlock, which then locks the trailer brake system and completes the connection to the rack monitor. The vapour hose must be disconnected before the brakes will release, allowing the truck to be driven away.

Specifications

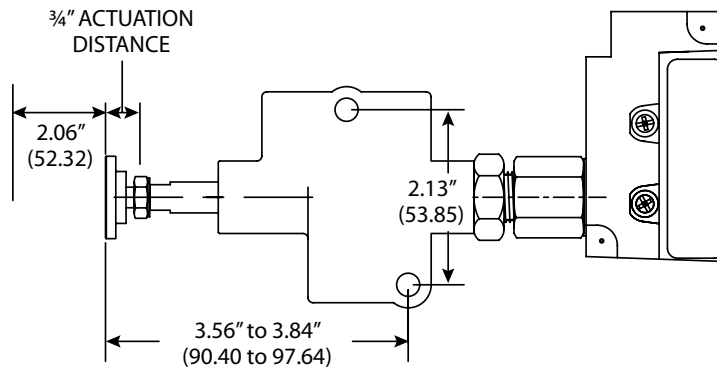
| | | |
|------------|----------|----------|
| Model Unit | 88015501 | 88015502 |
| Pounds | 1.25 | 1.25 |
| Kilograms | 0.57 | 0.57 |

Order Information

| Part | Description |
|----------|--------------------------------------|
| 88015501 | ¼" - 1" Button with Limit Switch |
| 88015502 | ¼" - 1" Roller Tip with Limit Switch |

| Part | Description |
|----------|----------------------------|
| 88115601 | Air Valve Assembly |
| 1102104 | *Nut - Hex Jam |
| 88115501 | *Adapter - Valve to Switch |
| 1100325 | O-ring |
| 1121902 | Limit Switch |
| 90012 | Service Kit for 880-155-01 |

* Note: These items are components of Air Valve Assembly 881-156-01



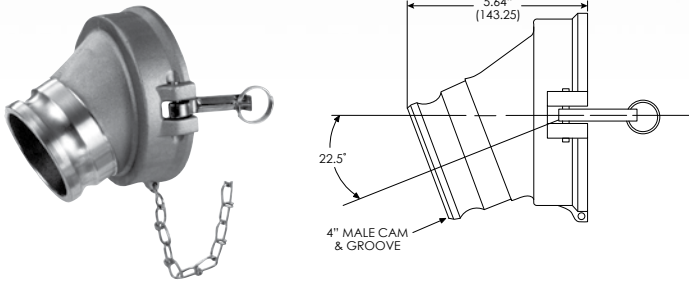
MALE AND FEMALE GRAVITY DROP ADAPTER

Let gravity do all the work with these high strength, corrosion-resistant adapters. A 22.5 degree angle makes service station drops a breeze with easy hose coupling and fast, unrestricted off-loading. Engineered to mate with API RP 1004 Bottom Loading Adapters, each adapter comes with a heavy-duty attachment chain and uses a large, resilient gasket that guarantees minimum product loss. The lightweight adapters are available in 3" male NPT or male cam and groove; 4" male NPT, male cam and groove or female cam and groove.

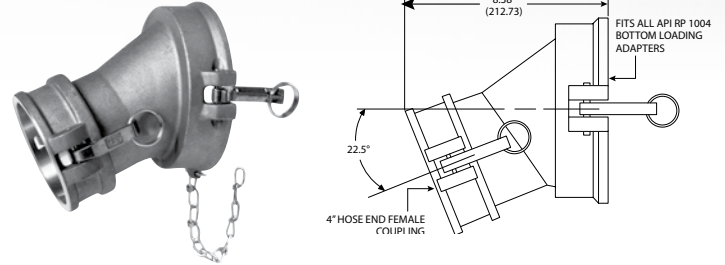
Highlights

- Heat-treated, anodized alloy body.
- Buna-N gaskets.
- Forged bronze cams and stainless steel pins.
- Meets API RP 1004 specifications.

Male



Female



Specifications

| Model Unit | 88041001 | 88041101 |
|---------------------------|-----------|------------|
| Size (Inches/Millimetres) | 3.00/76.2 | 4.00/101.6 |
| Weight (Pounds/Kilograms) | 4.00/1.81 | 5.00/2.27 |

| Model Unit | 88033001 |
|---------------------------|------------|
| Pack (In./Millimetre) | 4.00/101.6 |
| Weight (Pounds/Kilograms) | 6.06/2.75 |

Order Information

Male

| Part | Description |
|------------|----------------------|
| 880-410-01 | 3" Male Cam & Groove |
| 880-411-01 | 4" Male Cam & Groove |
| 880-206-01 | Gasket - API End |

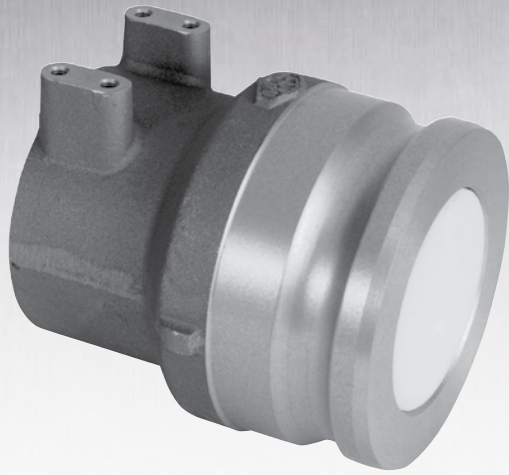
| Part Name | Part |
|------------------------------|----------|
| Rubber Gasket | 88020601 |
| 4" Drop Adapter - Body Only | 88041201 |
| Groove Pin | 1112507 |
| Cam Arm & Pull Ring Assembly | 77411603 |
| Double Loop Chain | 88011502 |
| S-Hook | 1111001 |

Female

| Part | Description |
|----------|-----------------------------|
| 88033001 | Female Gravity Drop Adapter |
| 88020601 | Gasket - API End |
| 77420204 | Gasket - Hose End |

| Part Name | Part |
|-------------------------|----------|
| Groove Pin | 1112507 |
| Cam Arm & Ring Assembly | 77411603 |
| S-Hook | 1111001 |
| Double Loop Chain | 88011502 |
| Gasket | 88020601 |
| Gasket | 77420204 |





THREADED VAPOUR CHECK VALVE

Use this Vapour Check Valve to return vapour to the truck during terminal loading and service station drops. The 3" poppet opens when coupled and closes when disconnected, preventing the vapours from escaping into the atmosphere. The valve has 3" or 4" female NPSM threads, a 4" cam and groove, and tapped mounting holes for the EBW® Air Interlock Brake. The 303 series is available without a poppet to serve as a male quick coupler with an Air Interlock Valve mounting pad.

Highlights

- Anodized aluminium construction.
- Stainless steel stem and spring.
- Buna-N gasket.
- Aluminium guide.

Specifications

| Model Unit | 30130001 | 30130002 | 30130003 | 30333303 | 30344404 |
|-------------------|-----------|-----------|-----------|-----------|-----------|
| Poppet | Yes | Yes | Yes | No | No |
| Thread Size | 3.00-NPSM | 4.00-NPSM | 3.00-BSPP | 3.00-NPSM | 4.00-NPSM |
| Weight (Lbs./Kg.) | 4.50/2.04 | 4.81/2.18 | 2.55/1.16 | 3.81/1.73 | 4.31/1.96 |

Order Information

| Part | Description |
|----------|--|
| 30130001 | 3" N.P.S.M. Vapour Recovery Adapter, with Poppet |
| 30130003 | 3" BSPP Vapour Recovery Adaptor, with Poppet |
| 30130002 | 4" N.P.S.M. Vapour Recovery Adapter, with Poppet |
| 30333303 | 3" N.P.S.M. Vapour Recovery Adapter, no Poppet |
| 30344404 | 4" N.P.S.M. Vapour Recovery Adapter, no Poppet |

| Part | Part Name |
|----------|---------------------------------------|
| 30030502 | Vapour Recovery Adapter - 3" N.P.S.M. |
| 30030202 | Vapour Recovery Adapter - 4" N.P.S.M. |
| 30030532 | Vapour Recovery Adapter - 3" B.S.P.P. |
| 1103915 | O-ring |
| 30020301 | Poppet |
| 30010501 | Spring - Poppet |
| 30020501 | Guide - Poppet Stem |
| 1109002 | Retaining Ring |
| 77020102 | 3" Gasket Cover |
| 77020103 | 4" Gasket Cover |



FLANGED VAPOUR CHECK VALVE

The sight glasses featured on this vapour recovery fitting can help detect liquid accumulation in the vapour manifold of a transport. A drain plug lets any extra fuel drain out, and the poppet prevents vapours from escaping when disconnected from the hose. A low pressure drop makes flow rates faster and vapour recovery safer. The adapter is constructed with a standard 4" TTMA flange, a 4" cam and groove, and a mounting pad for the Air Interlock Valve.

Specifications

| | | |
|---------------------------|------------|------------|
| Model Unit | 30230011 | 30230012 |
| Size (Inches/Millimetres) | 4.00/101.6 | 4.00/101.6 |
| Weight (Pounds/Kilograms) | 6.00/2.72 | 6.00/2.72 |

Order Information

| Part | Description |
|----------|--|
| 30230011 | Flanged Vapour Check Valve with Sight Glass |
| 30230012 | Flanged Vapour Check Valve without Sight Glass |

| Part | Part Name |
|----------|-----------------------------------|
| 1109002 | Retaining Ring |
| 30020501 | Poppet Stem Guide |
| 30010501 | Poppet Spring |
| 30020301 | 4" Poppet Vapour Recovery Adapter |
| 1101002 | Pipe Plug |
| 1121504 | Sight Glass |
| 1103915 | O-ring |



MECHANICALLY OPERATED 90 DEGREE EMERGENCY VALVE



Emergency Valves make product handling safer. These Emergency Valves have a shear groove that meets 49 CFR 178.345-8. The seat area of the valve is located inside the tank shell as required by DOT regulations.

This valve gives you the advantage of a faster flow rate while fitting a standard 4" TTMA sump. The high flow rate is established by a full opening throat area. Emergency Valves are available in 90 degree elbow type or straight type, 4" TTMA flanges or Victaulic™ outlet, and mechanical or air assisted.

Highlights

- High flow rate.
- Fits standard 4" TTMA sump.
- Shear section per TTMA, RP84-92 and meets DOT 49 CFR 178.345-8.
- Force ratings from TTMA RP86-92.
- Shear groove meets DOT 406 requirement.
- Optional external air cylinder available.
- Available in Victaulic™ (*) or flanged version.
- Fluorocarbon O-ring.

Specifications

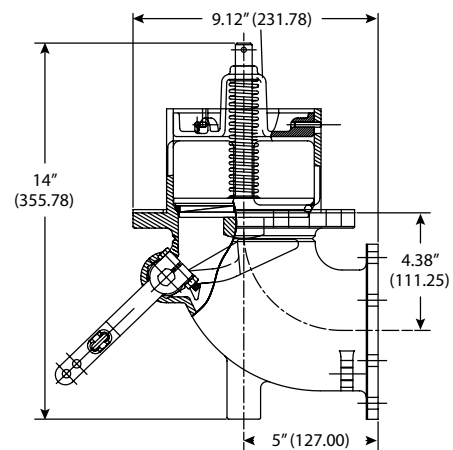
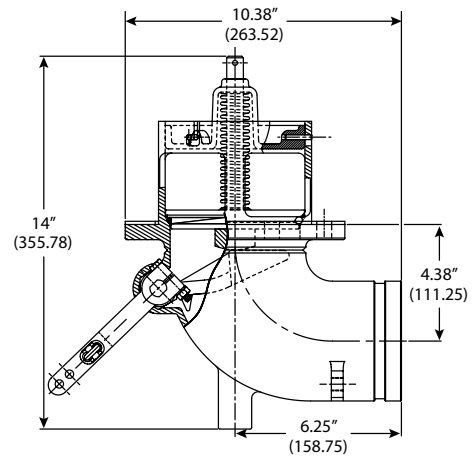
| | |
|---------------------------|-----------|
| Model Unit | 88043001 |
| Weight (Pounds/Kilograms) | 11.0/4.99 |

Flanged

| | |
|---------------------------|-----------|
| Model Unit | 88043101 |
| Weight (Pounds/Kilograms) | 11.0/4.99 |

Order Information

| Part | Description |
|----------|------------------------------------|
| 88043001 | 4" Standard-Outlet Seal Victaulic™ |



Order Information - continued

| Part Name | Part |
|------------------------------------|----------|
| Emergency Valve Victaulic™ 4" Body | 88042801 |
| 3/16" SYN PTFE Packing | 1135801 |
| O-ring FLC #2-114 | 1103920 |
| Spirol Retaining Ring | 1109008 |
| Cam Shaft | 88024101 |
| Stuffing Box Nut | 88024201 |
| Emergency Valve Retainer Assembly | 88026401 |
| Poppet Spring | 1135701 |
| Poppet Assembly | 88026301 |
| Cam | 88023301 |
| Cam Lever Assembly | 88026501 |
| Emergency Valve Sump Gasket | 1138801 |
| Anti-seize Lubricant | 1114401 |

Flanged

| Part | Description |
|------------|---------------------------------|
| 880-431-01 | 4" Standard Flanged Outlet Seal |

Flanged

| Part | Part Name |
|----------|-----------------------------------|
| 88042901 | Emergency Valve Flanged 4" Body |
| 1135801 | 3/16" SYN PTFE Packing |
| 1103920 | O-ring FLC #2-114 |
| 1109008 | Spirol Retaining Ring |
| 88024101 | Cam Shaft |
| 88024201 | Stuffing Box Nut |
| 88026401 | Emergency Valve Retainer Assembly |
| 1135701 | Poppet Spring |
| 88026301 | Poppet Assembly |
| 88023301 | Cam |
| 88026501 | Cam Lever Assembly |
| 1138801 | Emergency Valve Sump Gasket |
| 1114401 | Anti-seize Lubricant |





AIR ASSISTED 90 DEGREE EMERGENCY VALVE (VICTAULIC™)

Air assisted emergency valves make product handling safer and installation more convenient. The emergency valve has a shear groove that meets 49 CFR 179.345-7. The seat of the valve is located inside of the tank shell as required by DOT regulations. One valve has the capability to be converted to either right or left hand control.

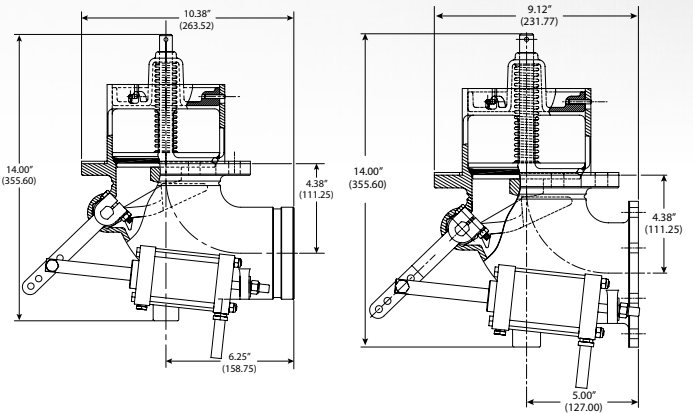
Specifications

| | |
|---------------------------|----------|
| Model Unit | 88043201 |
| Weight (Pounds/Kilograms) | 13.0/5.9 |

Flanged

| | |
|---------------------------|----------|
| Model Unit | 88043301 |
| Weight (Pounds/Kilograms) | 13.0/5.9 |

Order Information



| Part | Description |
|------------|---|
| 880-432-01 | 4" Standard Victaulic™ (*) Outlet Seal with External Air Cylinder |
| Part | Description |
| 88035002 | Emergency Valve Air Cylinder |
| 88042901 | 4" Victaulic™ (*) Emergency Valve Body |
| 1135801 | 3/16" SYN PTFE Packing |
| 1103920 | O-ring FLC #2-114 |
| 1109008 | Spirol Retaining Ring |
| 88024101 | Cam Shaft |
| 88024201 | Stuffing Box Nut |
| 88026401 | Emergency Valve Retainer Assembly |
| 1135701 | Poppet Spring |
| 88026301 | Poppet Assembly |
| 1138801 | Emergency Valve Sump Gasket |
| 88026501 | Cam Lever Assembly |
| 1152601 | Fusible Metal Pipe Plug, 1/8-27" NPT |
| 1149401 | Male Push-on Hose Fitting |
| 88015901 | Rubber Hose - Push-on Fitting |

Flanged

| Part | Description |
|----------|--|
| 88043301 | 4" Standard Flanged Outlet Seal with External Air Cylinder |



Order Information - continued

Flanged

| Part | Description |
|----------|--------------------------------------|
| 88035002 | Air Cylinder |
| 88042801 | 4" Flanged Emergency Valve Body |
| 1135801 | 3/16" SYN PTFE Packing |
| 1103920 | O-ring FLC #2-114 |
| 1109008 | Spirol Retaining Ring |
| 88024101 | Cam Shaft |
| 88024201 | Stuffing Box Nut |
| 88026401 | Emergency Valve Retainer Assembly |
| 1135701 | Poppet Spring |
| 88026301 | Poppet Assembly |
| 1138801 | Emergency Valve Sump Gasket |
| 88026501 | Cam Lever Assembly |
| 1152601 | Fusible Metal Pipe Plug, 1/8-27" NPT |
| 1149401 | Male Push-on Hose Fitting |
| 88015901 | Rubber Hose - Push-on Fitting |

3" EMERGENCY VALVE

Emergency Valves make product handling safer and installation more convenient. The emergency valve has a shear groove that meets 49 CFR 179.345-7. The seat of the valve is located inside of the tank shell as required by DOT regulations. One valve has the capability to be converted to either right- or left-hand control.

Highlights

- High flow rate.
- Fits standard TTMA sump.
- Cable Operator can be mounted right-handed or left-handed.
- Optional External Air Cylinder available.
- Air Cylinder can be mounted right-handed or left-handed.
- 3" Victaulic™ Outlet only.

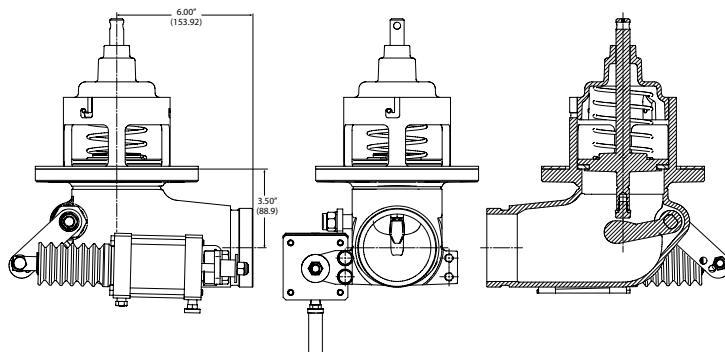
Specifications

Certifications/Listings

- TTMA, RP84-92: Shear Section.
- DOT 49 CRF 178.345-8: Shear Section.
- DOT 406: Shear Groove.
- TTMA, RP86-92: Force Rating.

Order Information

| Part | Description | Pack |
|----------|----------------------|--|
| 88045601 | Air Operated Valve | 3" TTMA Flanged x 3" Victaulic™ Outlet |
| 88044901 | Cable Operated Valve | 3" TTMA Flanged x 3" Victaulic™ Outlet |





880-455-01



880-493-01

PRODUCT DROP ELBOWS

This durable 22" tall product elbow was designed for those deep tank burial applications and has a high flow rate as a result of the unrestricted flow pattern. It fits all 4-inch top seal adapters and can also be ordered with a variety of different adapters to meet any requirement. The single four bolt flange design allows for easy replacement of adapters over competitive threaded styles and is designed for extremely easy on- and off-coupling as a result of aluminium bronze alloy docking.

Highlights

- Lightweight cast aluminium.
- Four bolt flange pattern fits all 4" seal adapters.
- Protective base shield.
- Unique cam locking handle for easy on/off coupling.
- 22" tall for deep tank burial applications.

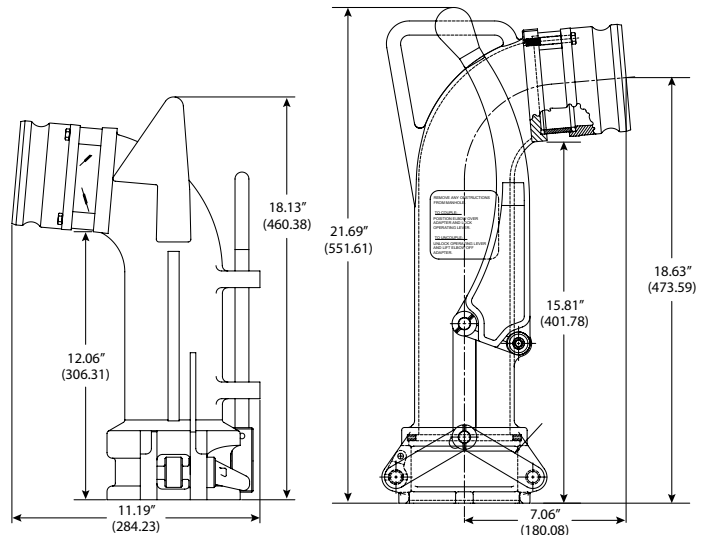
Specifications

| Model Unit | 88049301 | 88049302 | 88049303 | 88049304 | 88049305 |
|---------------------------|-----------|------------|-----------|------------|-----------|
| Weight (Pounds/Kilograms) | 12.3/5.58 | 13/5.9 | 14.5/6.59 | 14.5-6.59 | 14.5/6.59 |
| Size (Inches/Millimetres) | — | 4.00/101.6 | 3.00/76.2 | 4.00/101.6 | 3.00/76.2 |

| Model Unit | 88045001 | 88045501 | 88045502 | 88045504 | 88045505 |
|---------------------------|------------|------------|-----------|-----------|------------|
| Weight (Pounds/Kilograms) | 13.75/6.24 | 16/7.26 | 18/8.18 | 18/8.18 | 18/8.18 |
| Size (Inches/Millimetres) | — | 4.00/101.6 | 3.00/76.2 | 3.00/76.2 | 4.00/101.6 |

Order Information

| Part | Description |
|----------|---|
| 88049301 | Product Elbow Dual Point - No Adapter |
| 88049302 | 4" Cam and Groove Adapter with Sight Glass 21" tall |
| 88049303 | 3" Cam and Groove Adapter with Sight Glass |
| 88049304 | 4" NPT Adaptor with Sight Glass |
| 88049305 | 3" NPT Adaptor with Sight Glass |



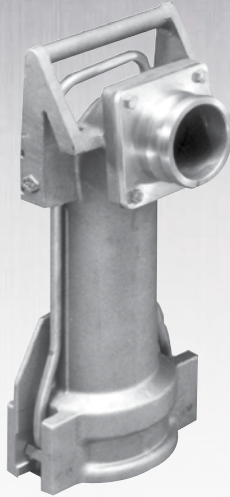
Order Information - continued

| Part | Part Name |
|----------|----------------------------------|
| 88013601 | Rear Arm Assembly |
| 88013901 | Connecting Link |
| 88048201 | Operating Handle |
| | Operational Instruction |
| 88013501 | Front Arm Assembly |
| 88015101 | Sight Tube Spacer |
| 88016201 | Sight Tube |
| 88014001 | Sight Glass Seal |
| 88028401 | 4" Dia. Coupling Adapter |
| 88039601 | 3" Cam & Groove Adapter |
| 88028901 | 4" NPT Adapter |
| 88039701 | 3" NPT Adapter |
| 1119001 | Wave Spring |
| 88013801 | Connecting Pin |
| 88014901 | Shoulder Spacer |
| 1119601 | Screw - 3/8-16 x 1.5" Hex Socket |
| 88013802 | Connecting Pin |
| 1118801 | High Alloy Groove Pin |
| 1118601 | Flanged Bushing |
| 88012101 | Cam Assembly Insert |
| 88014101 | Seal |

| Part | Description |
|----------|--------------------------------|
| 88045001 | Body Only |
| 88045501 | 4" Male Cam & Groove with S.G. |
| 88045502 | 3" Male Cam & Groove with S.G. |
| 88045504 | 3" Male NPT with S.G. |
| 88045505 | 4" Male NPT with S.G. |

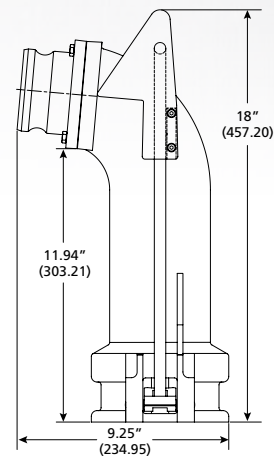
| Part | Part Name |
|----------|-------------------------|
| 88045901 | Product Elbow Body |
| 88023701 | Product Elbow Handle |
| 1130801 | Product Elbow Seal |
| 1108605 | Pin Spirol |
| 88031001 | Locking "Right" Cam |
| 88023801 | Handle Block |
| 88031002 | Locking "Left" Cam |
| 88014001 | Sight Tube Seal |
| 88016201 | Sight Tube |
| 88028401 | 4" Cam & Groove Adapter |
| 88015101 | Sight Tube Spacer |
| 88039601 | 3" Cam & Groove Adapter |
| 88024701 | Adapter Flange Gasket |
| 88039701 | 3" NPT Adapter |





DUAL POINT VAPOUR RECOVERY ELBOW

This durable cast aluminium elbow ensures complete vapour recovery for dual point systems, and can be ordered with a variety of different adapters to meet any requirement. The simple four bolt flange design allows for easy replacement of adapters over competitive threaded styles. Its low profile design allows for convenient storage and the specially designed quick grip one hand operation handle allows for easy on and off attachments.



Highlights

- Cast aluminium.
- Compact, low profile design.
- Four bolt flange pattern.
- Protective base shield.

Specifications

| Model Unit | 880460 | 88046501 | 88046502 |
|---------------------------|---------|------------|------------|
| Size (Inches/Millimetres) | — | 3/76.2 | 3/76.2 |
| Weight (Pounds/Kilograms) | 11/4.99 | 12.38/5.62 | 12.38/5.62 |

Order Information

| Part | Description |
|----------|------------------------------|
| 88046001 | Body Only |
| 88046501 | 3" Male Cam & Groove Adapter |
| 88046502 | 3" Male NPT Adapter |

| Part Name | Part |
|---------------------------------------|----------|
| #10 - 24 x 1/2" Socket Head Cap Screw | 1117012 |
| Handle Retainer Block | 88024601 |
| Vapour Elbow Locking Bar | 88039101 |
| Grooved (Straight) Pin | 1112607 |
| Elbow Seal | 87020001 |
| Locking Cam | 88024501 |
| Grooved (Straight) Pin | 1112601 |
| Adapter Flange Gasket | 88024701 |
| 3" Coupling Adapter | 88039601 |
| 3" NPT Adapter | 88039701 |





COAXIAL DELIVERY ELBOW

This longer Coaxial Delivery Elbow is designed to accommodate the needs of the tank truck industry. The longer elbow is made of durable lightweight cast aluminium. The elbow connects to the product line and vapour recovery line at the same time, allowing for single point drop and vapour recovery. This elbow meets Stage I and II vapour recovery standards.

Highlights

- Cast aluminium.
- 4" product line inlet (male cam and groove adapter).
- 3" vapour line outlet (male cam and groove adapter).
- Unique cam locking handle for easy on/off coupling.
- Accommodates all coaxial drop tube adapters.
- Four bolt flange pattern vs. threaded.

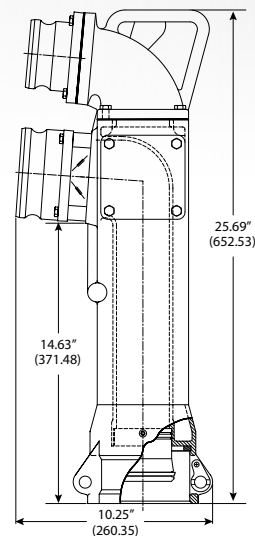
Specifications

| Model Unit | 88049001 | 88049003 |
|---------------------------|-----------|-----------|
| Size (inches) | 4 x 3 | 4 x 3 |
| Weight (Pounds/Kilograms) | 22.0/9.98 | 22.0/9.98 |

Order Information

| Part | Description |
|----------|--|
| 88049001 | Over and Under Tall 4" x 3" Cam & Groove |
| 88049003 | Over and Under Tall 4" NPT x 3" Cam & Groove |

| Part Name | Part |
|------------------------------------|----------|
| Flanged, Coaxial Elbow | 88038001 |
| Operating Handle | 88048201 |
| Gasket | 88028101 |
| Vapour Outlet Block Off Plate | 88022901 |
| Top Gasket | 88028201 |
| Rollpin - 1/8" x 1" | 1100403 |
| Connecting Pin | 88013802 |
| Connecting Pin | 88013801 |
| Wave Spring | 1119001 |
| Screw - 3/8", 16 x 1/2" Hex Socket | 1119601 |
| O-ring Seal | 88014701 |
| Fuel Connection Adapter | 88028501 |
| Coaxial Elbow Seal | 88014101 |



| Part Name | Part |
|-------------------------|----------|
| Fuel Connection Seal | 88014601 |
| Rear Arm Assembly | 88013601 |
| Front Arm Assembly | 88013501 |
| Cam Assembly Insert | 88012101 |
| Long Connecting Link | 88013902 |
| Cam & Groove 3" Adapter | 88039601 |
| Cam & Groove 4" Adapter | 88028401 |
| Sight Tube | 88016201 |
| Sight Tube Spacer | 88015101 |
| Sight Tube Seal | 88014001 |
| 4" NPT Adapter | 88028901 |
| 3" NPT Adapter | 88039701 |





TWO-WIRE CONTROLLER

The OCS Two-Wire Controller (890-400-02) is designed with a large viewing window. The anodized aluminium housing is rated NEMA® 4 with ½" NPT openings for ease of wiring. The Control Module is a microprocessor-based controller that provides continuous self-testing of probes, wiring, rack inputs, input voltage and memory settings. Inputs and outputs are intrinsically safe and FMRC/CSA approved for hazardous locations.

Highlights

- Microprocessor base controller.
- Continuous self-diagnostics.
- Internal relay outputs.
- FMRC approved for Hazardous (Classified) Locations.
- Versatile mounting features.
- Continuous self-testing of:
 - All probes attached
 - All probe and power wiring
 - Rack input signals for terminal
 - Proper input voltage

Order Information

| Part | Description |
|----------|--|
| 89040002 | Controller Mounted in Waterproof Housing |
| 89020002 | Control Module Only |



TWO-WIRE OPTIC OVERFILL PROBES

OCS Two-Wire Probes are manufactured with a leakproof aluminium body and anodized black aluminium tip to absorb stray light. For optimum performance, reliability and accuracy a glass ground prism is standard for all styles of probes. Optic Two-Wire Probes are thermistor compatible for connecting directly to the overfill monitor and require no dummy element.

Highlights

- Probes feature surface mount military spec electronic components.
- Two-Wire Probes - thermistor compatible.
- Operating temperature -40 °F to +160 °F
- FMRC approved for Hazardous (Classified) Locations.

Order Information

| Part | Description | Length |
|----------|-------------------------------|--------|
| 89011001 | Two-Wire Optic Overfill Probe | 8" |



PROBE HOLDER SOLUTIONS



Probe Holders are anodized aluminium with 1/2" NPT openings positioned for easy access and wiring. An O-ring seal is standard for short and tall caps. The three bolt locking ring prevents probe movement and seals the housing from product splash and vapours.

Highlights

- Anodized aluminium construction.
- 1/2" NPT connection ports.
- 2" NPT cast lock nut.
- Tall or short cover.
- O-ring sealed.
- Three bolt locking ring.
- For use with all EBW® and other manufacturers' probes.

Order Information

| Part | Description | Parts Included |
|----------|--|--|
| 90826202 | Probe Holder with 2" NPT Male Thread, Tall Cap | |
| 90826301 | Probe Holder with 2" Cast Lock Nut | |
| 90820801 | Tall Probe Holder Cover | |
| 89025702 | Probe Holder with Probe Kit | 1 Probe Holder (90826301) 1 Two-Wire Probe (89011001) |



SINGLE SOCKET SOLUTIONS

Single Sockets are manufactured in accordance to API RP1004 and are compatible with all overfill monitor plugs. These sockets are moisture proof and have stainless steel contact pins in a bakelite housing. Hard-coated aluminium faceplates and J-Slots are long-lasting and come standard with black plastic caps. Optic, Thermistor and Float styles are available.

Highlights

- Ease of installation.
- Moisture proof.
- Stainless steel contact pins.
- Produced in accordance with API 1004.
- Available in all three API standard socket configurations.

Order Information

| Part | Description |
|----------|------------------------------------|
| 90821101 | Thermistor Socket with Plastic Cap |
| 90822101 | Optic Socket with Plastic Cap |
| 90823001 | 7-Pin Socket with Plastic Cap |
| 90811901 | Plastic Cap Only |
| 90811001 | Thermistor Conversion Kit |
| 90812001 | Optic Conversion Kit |
| 90823101 | 7-Pin Conversion Kit |



INSTALLATION KITS

Highlights

- Seven conductor oil resistant cable included.
- Watertight connectors included.
- Controller included.
- Probes included.
- Probe holders included.

Order Information

| Part | Description | Parts Included |
|----------|-------------------|--|
| 89016202 | 2 Compartment Kit | (2) 89025702 probe w/ holder, (1) 89040002 2-wire controller, (6) 90813101 watertight bushing 1/2", (1) 90813203 7-CON cable 50' |
| 89016203 | 3 Compartment Kit | (3) 89025702 probe w/ holder, (1) 89040002 2-wire controller, (12) 90813101 watertight bushing, (1) 90813206 7-CON cable 100' |
| 89016204 | 4 Compartment Kit | (4) 89025702 probe w/ holder, (1) 89040002 2-wire controller, (16) 90813101 watertight bushing, (1) 90813206 7-LON wire 100' |

WIRING KITS

Order Information



| Part | Description | Parts Included |
|----------|---------------------------------|---------------------------------------|
| 90831301 | Three Compartment Wiring Kit | 100' Cable and 12 Watertight Fittings |
| 90831401 | Four Compartment Wiring Kit | 100' Cable and 16 Watertight Fittings |
| 90831501 | Five Compartment Wiring Kit | 100' Cable and 22 Watertight Fittings |
| 90831601 | Six Compartment Wiring Kit | 100' Cable and 30 Watertight Fittings |
| 90813101 | Watertight Fitting Only | N/A |
| 90813206 | 100' Seven Conductor Cable Only | N/A |
| 90813203 | 25' 7-CON cable | N/A |



VAPOUR CAPS

These lockable vapour caps act like dust covers, but won't activate the Air Interlock Valve when used on vapour check valves and adapters. Iron-copper infiltrated cams create a solid push-down-and-pull-up movement for quick, easy removal and replacement; steel latches hold the caps secure. Orange in colour to indicate vapour recovery, the caps can be used with any 4" male cam and groove. Caps also available with finger ring and chains.

Highlights

- Meets API RP 1004 Standard.
- Aluminium or glass-filled nylon construction.
- Iron-copper infiltrated cams and steel latches.
- Lockable.

Order Information

| Part | Description |
|----------|---|
| 30420001 | Nylon Vapour Cap without Chain |
| 30420002 | Nylon Vapour Cap with Chain |
| 30420004 | Nylon Vapour Cap without Chain-Chevroned Gasket |
| 30420005 | Nylon Vapour Cap with Chain-Chevroned Gasket |
| 30430101 | Aluminium Vapour Cap without Chain |
| 30430102 | Aluminium Vapour Cap with Chain |

for 30420001/30420002/30420004/30420005

| Part Name | Part |
|---------------------------|-----------|
| Spirol Pin | 1102409 |
| Security Chain with Rings | 77411003 |
| Handle Assembly | 30411201 |
| Vapour Recovery Cover | 30430501 |
| Flat Gasket | 77711101* |
| Gasket with Chevrons | 30410501* |

*30420001/30420002 use 77711101 Flat Gasket

30420004/30420005 use 30410501 Gasket with Chevrons

for 30430102

| Part Name | Part |
|---------------------------|----------|
| Gasket | 95021501 |
| Aluminium Body Cover | 30430601 |
| Spirol Pin | 1102403 |
| Security Chain with Rings | 77411003 |
| Cover Assembly | 30430101 |





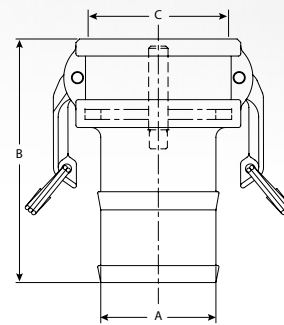
VAPOUR RETURN HOSE COUPLERS

Fast, safe vapour recovery is easy with probed hose couplers. Hose shank end bands to a vapour recovery hose and the probe automatically opens the poppet of the vapour check valve when coupled. The coupler comes in three sizes for use with most vapour check valves and hose configurations. The poppetted vapour return hose coupler design prevents vapour from escaping when disconnected. The probe automatically opens the vapour check valve when connected properly. The design also offers low restrictive vapour passage. The body and probe are made of heat-treated anodised aluminium with forged bronze cams and stainless steel pins, and the poppet has a replaceable fluorocarbon seal.

Highlights

- Meets API RP 1004 Standard.
- Heat-treated, aluminium alloy body and brass probe.
- Forged bronze cams and stainless steel pins.
- Used with probe for opening vapour check valve.

Specifications



| Model Unit | 77432002 | 77432003 |
|-----------------------------|-------------|-------------|
| Dim. A (Inches/Millimetres) | 3.00/76.2 | 4.00/101.6 |
| Dim. B (Inches/Millimetres) | 6.62/168.15 | 6.62/168.15 |
| Dim. C (Inches/Millimetres) | 4.75/120.65 | 4.75/120.65 |
| Weight (Pounds/Kilograms) | 3.00/1.36 | 3.38/1.53 |

Order Information

| Part | Description |
|----------|-------------------------|
| 77432002 | 774-CV 4" x 3" Assembly |
| 77432003 | 774-CV 4" x 4" Assembly |

| Part Name | Part |
|-------------------------|----------|
| 774-CV 4" x 3" Assembly | 77432002 |
| 774-CV 4" x 4" Assembly | 77432003 |
| Probe | 77411201 |
| 3" Gasket | 77420203 |
| 4" Gasket | 77420204 |
| Groove Pin | 1112507 |
| Cam & Ring Assembly | 77411603 |



AIR-OPERATED SEQUENTIAL VAPOUR VALVES



Handle fuel vapours safely and efficiently with this lightweight aluminium vapour valve. The air-operated valve allows fast vapour flow during loading and unloading. The poppet is designed to open into the tank, preventing accidental leakage from product surges or from a tank truck rollover. Easy-to-use air line connections are located outside the compartment for convenient installation and maintenance. The 3.5" vapour valve comes with male NPT threads or a TTMA flange for installation in conventional 16" or 20" manholes.

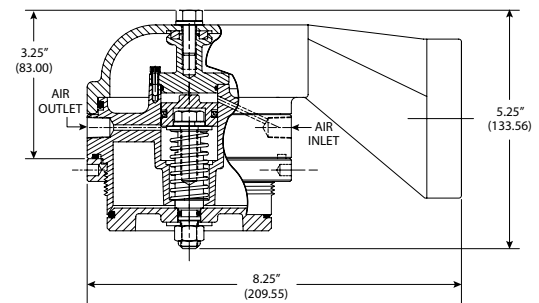
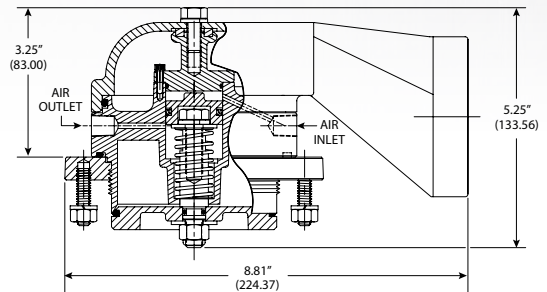
Highlights

- Lightweight aluminium body and hood.
- Fluorocarbon seal.
- TTMA specifications.

Order Information

| Part | Description |
|----------|--------------------|
| 88034301 | Flanged with Hood |
| 88034501 | Threaded with Hood |

| Part | Part Name |
|----------|---------------------------------------|
| 1103403 | Square Cut Seal Ring |
| 88034401 | Sequential Vapour Valve Body Assembly |
| 1100326 | O-ring |
| 88026701 | Mounting Assembly Flange |





HOSE TUBE DOORS

Total protection from the elements is what you get with the heavy-duty Hose Tube Door. Beyond durable, this door withstands rusting, rugged use, and continuous road wear. The cap closes securely and can be used with a padlock for theft protection. All three sizes are available plain or cast with the EBW® logo or our customised logo. Call for pricing and lead time.

Highlights

- Cast aluminium frame and cap.
- Spring steel, chrome and plated hardware.
- Nylon bushing.
- Name embossed upon request.

Specifications

| Model Unit | 78430003 | 78440003 |
|---------------------------|------------|------------|
| Style | Plain | Plain |
| Size (Inches/Millimetres) | 6.00/152.4 | 8.00/203.2 |
| Weight (Pounds/Kilograms) | 3.00/1.36 | 4.00/1.81 |

Order Information

| Part | Description |
|----------|---------------|
| 78430003 | 6" Plain Door |
| 78440003 | 8" Plain Door |



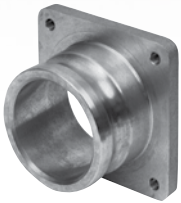
ATTACHMENTS



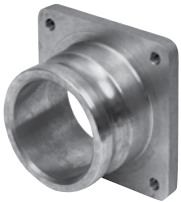
| | |
|---------------------------|----------|
| Model Unit | 88024801 |
| Weight (Pounds/Kilograms) | 6.0/0.17 |



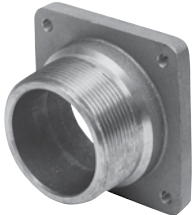
| | |
|---------------------------|-----------|
| Model Unit | 88024901 |
| Weight (Pounds/Kilograms) | 13.0/0.37 |



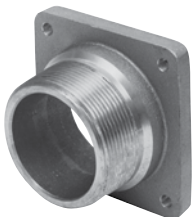
| | |
|---------------------------|-----------|
| Model Unit | 88039601 |
| Weight (Pounds/Kilograms) | 1.19/0.45 |



| | |
|---------------------------|-----------|
| Model Unit | 88028401 |
| Weight (Pounds/Kilograms) | 1.44/0.65 |



| | |
|---------------------------|-----------|
| Model Unit | 88039701 |
| Weight (Pounds/Kilograms) | 1.44/0.65 |



| | |
|---------------------------|-----------|
| Model Unit | 88028901 |
| Weight (Pounds/Kilograms) | 1.50/0.68 |

- Heat-treated, aluminium alloy body and brass probe.
- Forged bronze cams and stainless steel pins.



| Part | Description |
|----------|----------------------------|
| 77421220 | 2" Cam and Groove Dust Cap |
| 77421240 | 4" Cam and Groove Dust Cap |





SIDE SEAL ADAPTOR

The Side Seal Adaptor is designed to give flexibility to top seal drop elbows. Your 4" top seal delivery elbow can now be used on a side 4" seal fill adapter. You don't have to bring a separate side seal elbow, which reduces cost and the number of fittings required on your truck.

Two lever clamps secure the adaptor to the station's side seal fitting and allow a 4" elbow to attach to the adapter. Special locking rings prevent accidental cam arm release during filling. Cast aluminium makes the side seal adaptor light and strong. The specially designed seal gives you the added insurance that no leaks will occur.

Highlights

- Designed for use with 4" side seal service station fittings.
- Lightweight.
- Cast aluminium body.
- Special innovative seal design.
- No separate side seal elbow to transport.
- Locking rings to prevent accidental cam arm release during filling.

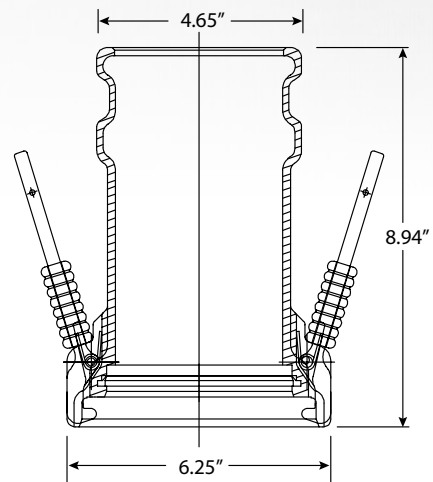
Specifications

| | |
|---------------------------|-----------|
| Model Unit | 88044501 |
| Weight (Pounds/Kilograms) | 10.0/4.58 |

Order Information

| Part | Description |
|----------|-------------------|
| 88044501 | Side Seal Adaptor |

| Part Name | Part |
|--------------------------------------|----------|
| Seal | 88120201 |
| Release Lever Spring | 88110301 |
| Release Lever Interlock | 88120100 |
| Pin, 0.125 x 0.875", Groove Type "E" | 1145901 |
| Release Lever | 88120001 |



If you wish to contact us about any of our products or services please contact the nearest Franklin Fueling Systems office.

For a list of local contacts please visit franklinfuelling.com for more information.

US and Canada

Franklin Fueling Systems
3760 Marsh Rd.
Madison, Wisconsin
53718, USA
T: +1 800 225 9787
F: +1 608 838 6433

UK

Franklin Fueling Systems Limited
Olympus Close, Whitehouse Industrial Estate,
Ipswich, Suffolk,
IP1 5LN, UK
T: +44 (0)1473 243 300
F: +44 (0)1473 243 301

Europe

Franklin Fueling Systems GmbH
Rudolf-Diesel-Str. 20,
54516, Wittlich,
Germany
T: +49 6571 105 380
F: +49 6571 105 510

Australia

Franklin Fueling Systems Australia
21 Aristoc Road - PO Box 47
Glen Waverley, Vic 3150
Australia
T: +61 3 9550 1874
F: +61 3 95 61 94 77

China

Franklin Fueling Systems (Beijing) Co., Ltd
A802, ChaoWaiMEN Centre, No. 26 Chaowai Street,
Chaoyang District,
Beijing 100020, China
T: +86 10 8565 4566
F: +86 10 8565 4766

India

Franklin Wadcorpp Pvt Ltd
C-10 / 1 Ranjangoan MIDC
Industrial Area, Tal. Shirur
Dist. Pune - 412220
T: +91 (0) 2138 610900

Brazil

Franklin Fueling Sistemas de Combustíveis Ltda
Rua Hans Dieter Schmidt, 1.501
Zona Industrial Norte
Joinville, Santa Catarina, Brazil, 89219-504
T: +55 0800 710 0300



TOTAL SYSTEM

S O L U T I O N S



Franklin Fueling Systems

franklinfueling.com

Franklin Fueling Systems GmbH
Rudolf-Diesel-Str. 20, 54516 Wittlich, Germany
Tel: +49-6571-105-380 • Fax: +49-6571-105-510
US/Can: +1 800 225 9787 • Mex: 001 800 738 7610
UK: +44 (0)1473 243300 • CN: +86 10 8565 4566



FFS-0440 TS 4-17

Global Product Catalogue