

ENAR

**World Leader
in Concrete Vibrators**



**VIBRATION
SURFACING
COMPACTION**





Our Commercial network spans across
all 5 continents

Subsidiaries in:

France

Mexico

Poland

China

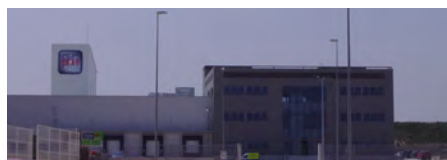
United States

OUR HISTORY

ENARCO is a Spanish company dedicated to manufacturing their own light construction machinery. ENARCO was founded in 1964 and through their dedication and success, they have become the leading company for light construction machinery both in the domestic and worldwide markets. ENARCO have grown and established a presence across all 5 continents through their exportation and the growth of commercial networks using subsidiaries in these 5 countries; France, Mexico, Poland, China & United States.



enarGroup



1964

Creation
Manufacturing pneumatic tools.

1978

Concrete Vibrators
ENAR begin manufacturing a range of Pneumatic, Pendulum and internal motor concrete vibrators.

1994

Light Compaction
The introduction of light compaction range. Making them the first Spanish company to manufacture their own tamping rammers and compaction plates.

1996

Surfacing Range/Electronic Concrete Vibrators
The creation of a complete range of vibrating screeds, both electric and petrol. The first electric concrete vibrators.

2002

Certified under ISO9001/International Expansion
The growth of ENAR creating subsidiaries in France, Poland and Mexico.

2008

ENAR Shanghai
The opening of an ENAR factory and Subsidiary in Asia.

2009

New Facility
ENAR invested and built their new 10,000m² factory in Zaragoza. Where they began the design, manufacturing and commercialisation of more than 50,000 products a year.

2018

New Boxel/New American Subsidiary Company
The introduction of the new Boxel, a revolutionary advance in technology and the start of the subsidiary in the United States.

CONTENTS TABLE

1. VIBRATION RANGE	
1.1 PORTABLE ELECTRIC VIBRATORS.....	1-6
1.2 PORTABLE PETROL VIBRATORS.....	7-10
1.3 HIGH FREQUENCY.	11-14
1.4 CONVERTERS	15-22
1.5 ELECTRONIC CONVERTERS	23-26
1.6 PENDULUM VIBRATORS	27-30
1.7 TPENDULUM TRANSMISSIONS & POKER HEADS	31-32
1.8 PNEUMATIC VIBRATORS	33-34
1.9 EXTERNAL VIBRATORS	35-36
2. SURFACING RANGE	
2.1 VIBRATING SCREEDS.....	37-50
2.2 BULL FLOATS	51-52
2.3 MANUAL TROWELS	53-54
2.4 POWER TROWELS	55-58
3. COMPACTION RANGE	
2.1 TAMPING RAMMERS	59-60
2.2 SINGLE DIRECTION COMPACTION PLATES	61-64
2.3 REVIERSIBLE COMPACTION PLATES	65-70
2.4 VIBRATING ROLLERS	71-74
4. NOTES	



PORTABLE ELECTRIC AVMU

The AVMU is a universal, single-phase, portable electric vibrator from Enar, perfect for jobs where freedom of movement is as important as the tool in hand. The AVMU range stands out for its simplicity, efficiency and easy connection of transmissions.

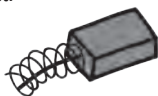
Designed & Manufactured in Europe to a high standard of quality
Manufactured using high quality materials ensures high resistance and waterproofing (IP44).



+ Rapid Start

Switch in handle for easy turn on and turn off.

Easy to get in motion thanks to its integrated switch in the handle. The switch is also (IP44) protected meaning it is waterproof and won't get any dirt stuck inside, improving the longevity of the product.



+ Carbon Brushes

With quick release system.

The complete range of portable electric Enar vibrators use quick release carbon brushes, making them easy to change. No need to take the product apart.



+ Light

Compact piece of equipment and easy to use with a highly resistant housing.

The AVMU (Motor Unit) only weighs 5kg, making it the lightest Enar portable concrete vibrator.



+ Air Filter

Easy to change filter.

The air filter is attached at the back of the product to avoid any dirt entering in from the front as you work and is super easy to change.



TECHNICAL DATA

MODEL	WEIGHT (Kg)	VOLTAGE (V)	FREQUENCY (Hz)	POWER (W)	DIMENSIONS (LxWxH)
AVMU 230V	5	230 1~	50-60	2,300 W	354x105x205
AVMU 115V	5	115 1~	50-60	2,300 W	354x105x205



» High resistant housing, also protected against dust and rain (IP44).

» Oversized motor and double insulation.

AX HEADS

MODEL	DIAMETER (mm)	LENGTH (mm)	WEIGHT (Kg)	SPEED (r.p.m)	PERFORMANCE m³/h
AX 25	25	285	0.8	14,000	10
AX 32	32	366	1.7	13,750	14
AX 40	40	335	2.2	13,500	17
AX 48	48	335	3.2	12,500	28
AX 58	58	344	4.5	12,000	35



» Oversized eccentric.

» Easily interchanged poker heads.

» 4 oil lubricated bearings with double lock.

» Double casket/seal.

FLEXIBLE TRANSMISSIONS

MODEL	LENGTH (m)	WEIGHT (Kg)
TAX 0,6 - TAXE 0.6	0.6	2.6
TAX 1 - TAXE 1	1	3
TAX 1.5 - TAXE 1.5	1.5	3.5
TAX 2 - TAXE 2	2	4
TAX 3 - TAXE 3	3	5
TAX 4 - TAXE 4	4	6
TAX 5 - TAXE 5	5	7
TAX 6 - TAXE 6	6	8



» Reinforced TAX transmission/Drive.

» The TAXE is only for poker sizes AX25 and AX32.

» Vulcanized transmission at the poker end, providing protection to the part of the transmission most likely to wear out or break.



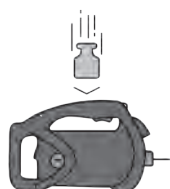
PORTABLE ELECTRIC FOX

The FOX is a single-phase, portable electric motor from ENAR which is protected by its sturdy, ergonomic housing.

It has been designed to transmit power through a transmission which turns, causing an eccentric inside the poker head to spin at 12,000 rpm and generate vibration.

Designed & manufactured in Europe to a high standard of quality.

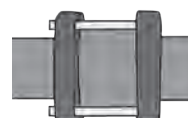
Manufactured using high quality materials ensures high resistance & protection (IP44). The FOX uses an oversized motor and double insulation to guarantee its performance in every job condition.



+ Robust & resistant

Against damage.

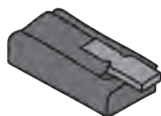
The material used in the housing of the FOX is resistant against impact, and also stable when the product reaches high temperatures from continuous use on heavy workloads.



+ Encased motor

made for maximum protection.

The FOX is the only concrete vibrator with an independent motor, mounted separately from the housing, using a small bespoke frame, providing additional protection and facilitates easy product maintenance with fewer spare parts.



+ Carbon brushes

With quick release system.

The complete range of portable electric ENAR vibrators use quick release carbon brushes. Making them easy to change. No need to take the product apart.



+ Manageable

Thanks to its two handles.

The FOX has one handle on top which incorporates a switch and is used to easily hold the motor while in use. Alternatively, the FOX also has a smaller handle at the back which is more comfortable for those using smaller transmissions.



TECHNICAL DATA

MODEL	WEIGHT (Kg)	VOLTAGE (V)	FREQUENCY (Hz)	POWER (W)	DIMENSIONS (LxWxH)
FOX 230V	5.8	230 1~	50-60	2,300 W	354x105x205
FOX 115V	5.8	115 1~	50-60	2,300 W	354x105x205



- » Highly resistant housing (IP44).
- » Oversized motor & double insulation.
- » Other couplings available.
- » Includes shoulder strap.

AX HEADS

MODEL	DIAMETER (mm)	LENGTH (mm)	WEIGHT (Kg)	SPEED (r.p.m)	PERFORMANCE m³/h
AX 25	25	285	0.8	14,000	10
AX 32	32	366	1.7	13,750	14
AX 40	40	335	2.2	13,500	17
AX 48	48	335	3.2	12,500	28
AX 58	58	344	4.5	12,000	35



- » Oversized eccentric.
- » 4 lubricated bearings with double lock.
- » Easily interchanged.

FLEXIBLE TRANSMISSIONS

MODEL	LENGTH (m)	WEIGHT (Kg)
TAX/TDX 0.6 - TAXE/TDXE 0.6	0.6	2.6
TAX/TDX 1 - TAXE/TDXE 1	1	3
TAX/TDX 1.5 - TAXE/TDXE 1.5	1.5	3.5
TAX/TDX 2 - TAXE/TDXE 2	2	4
TAX/TDX 3 - TAXE/TDXE 3	3	5
TAX/TDX 4 - TAXE/TDXE 4	4	6
TAX/TDX 5 - TAXE/TDXE 5	5	7
TAX/TDX 6 - TAXE/TDXE 6	6	8



- » Reinforced TAX/TDX transmissions.
- » TAXE/TDXE only for the AX25 & AX 32 poker heads.
- » Vulcanized transmission at the poker end, providing protection to the part of the transmission most likely to wear out or break.



PORTABLE ELECTRIC DINGO

The Dingo single-phase, portable, electronic vibrator from ENAR which is protected by its robust design and thanks to its eternal housing which surrounds the motor. It has been designed to transmit power through a transmission which turns, causing an eccentric inside the poker head to spin at 12,000rpm and generate vibration.

Designed & Manufactured in Europe to a high standard of quality
Manufactured using high quality materials ensures high resistance. The Dingo uses an oversized motor and double insulation to guarantee its performance in every job condition.



+ Robust & Resistant

Against Damage.

The Dingo from Enar uses 3 handles to protect the motor and housing against damage. On top of this, the housing itself is made from high quality materials for any unlikely scenario where the handles need additional help protecting the motor.



+ Secure

In any given situation.

The motor from the Dingo is has been double insulated and also has an oversized motor to guarantee a high performance in all working conditions.



+ Manageability

Whatever the job or testing situation may be.

Thanks to the 3 handles that surround the motor and housing, the Dingo is far more comfortable to hold regardless of the length of transmission/drive, unlike other concrete vibrators.



+ Ease of Use

In any given situation.

The switch for the DINGO is at the back of the housing, behind a handle. This means the switch is protected as well as also being watertight. It also provides the advantage that you can use long or short transmissions and the switch will be close to your hand unlike other models.



TECHNICAL DATA

MODEL	WEIGHT (Kg)	VOLTAGE (V)	FREQUENCY (Hz)	POWER (W)	DIMENSIONS (LxWxH)
DINGO 230V	5.8	230 1~	50-60	2,300 W	354x244x229
DINGO 115V	5.8	115 1~	50-60	2,300 W	354x244x229



- » High resistant housing, also protected against dust and rain (IP44).
- » Includes a shoulder strap.
- » Oversized motor and double insulation.
- » Other couplings available upon request.

AX HEADS

MODEL	DIAMETER (mm)	LENGTH (mm)	WEIGHT (Kg)	SPEED (r.p.m)	PERFORMANCE m³/h
AX 25	25	285	0.8	14,000	10
AX 32	32	366	1.7	13,750	14
AX 40	40	335	2.2	13,500	17
AX 48	48	335	3.2	12,500	28
AX 58	58	344	4.5	12,000	35



- » Oversized eccentric.
- » 4 oil lubricated bearings with double lock.
- » Easily interchanged poker heads.

FLEXIBLE TRANSMISSIONS

MODEL	LENGTH (m)	WEIGHT (Kg)
TDX 0.6 - TDXE 0.6	0.6	2.6
TDX 1 - TDXE 1	1	3
TDX 1.5 - TDXE 1.5	1.5	3.5
TDX 2 - TDXE 2	2	4
TDX 3 - TDXE 3	3	5
TDX 4 - TDXE 4	4	6
TDX 5 - TDXE 5	5	7
TDX 6 - TDXE 6	6	8



- » Reinforced TAX/TDX transmissions.
- » TAXE/TDXE only for the AX25 & AX 32 poker heads.
- » Vulcanized transmission at the poker end, providing protection to the part of the transmission most likely to wear out or break.



PORTABLE PETROL VIB-BAR

The Vib-Bar from ENAR is a simple but effective set up consisting of a motor, aluminium bar with a handle, a short flexible shaft and a poker.

As always, the transmission and poker are very easy to attach making life easier for the user.

No Restriction Of Movement.

The Vib-Bar provides the user with maximum freedom of movement. No electric cables, no pieces to pull along the floor, everything held on your shoulder and controlled using both hands. This product has been designed primarily for the user's comfort and ability to move around the



+ No surprise shocks!

Added safety for the user and work colleagues.

Thanks to its petrol motor, no plugs or electric cables are used on this product. This means no tripping over loose cables, no exposed damaged or exposed wires and no risk of electric shock.



+ Super Light

No overbearing back aches.

As well as being light thanks to its simple design, the Vib-Bar is also very compact while in use and even more so when disassembled to be stored away. Another reason why the product provides the user with exceptional movement across the jobsite.



+ Independence!

No need to fight for a plug socket!

Thanks to its light and compact design as well as running on petrol, this product provides independence to the user. No need to work within the area permitted by the length of the electric cable, no need to pay extra attention to cables knotting or tripping people up and no need to share due to the limited plug sockets. Start up the motor and walk wherever the job requires to be.



TECHNICAL DATA

MODEL	WEIGHT (Kg)	POWER (CV)	ENGINE	FUEL	ENGINE CAPACITY CC	SPEED (r.p.m)
VIB-BAR H	6	1.6	HONDA GX 35 4T	GASOLINE	35.8	10,000

- » Centrifugal clutch.
- » Throttle integrated into the handle.

AX HEADS

MODEL	DIAMETER (mm)	LENGTH (mm)	WEIGHT (Kg)	SPEED (r.p.m)	PERFORMANCE m³/h
AX 45	45	325	3	9.500	25

- » Oversized eccentric.
- » 4 bearings lubricated with oil and a double lock.
- » Multiple poker heads available but will reduce the performance of the equipment.



FLEXIBLE TRANSMISSIONS

MODEL	LENGTH (m)	WEIGHT (Kg)
TBX 0.5	0.5	2



- » High quality, reinforced transmission.
- » The exterior of the transmission is supported by a flexible metal coil.



PORTABLE PETROL BACKPACK

The Backpack from ENAR consists of a portable vibrator, powered by a petrol motor which is mounted securely onto a Metal frame. As per all of the connections from ENAR, the connection of transmissions and pokers are very simple and easy to attach allowing for the user to make quick changes.

Freedom of Movement Assured.

The backpack allows the user to move freely without any restriction from electric cables, this can be done in comfort thanks to the ergonomic and comfortable support of the Backpack. This product has been designed for comfort and for the use on horizontal work such as pavements and floors.



+ No surprise shocks!

Added safety for the user and work colleagues.

Thanks to its petrol motor, no plugs or electric cables are used on this product. This means no tripping over loose cables, no exposed damaged or exposed wires and no risk of electric shock.



+ Super Light

No overbearing back aches.

As well as being light thanks to its simple design, the Vib-Bar is also very compact while in use and even more so when disassembled to be stored away. Another reason why the product provides the user with exceptional movement across the jobsite.



+ Maneuverability

Independent work.

In many cases an electrical source is not available on the job site and in others it can be difficult to navigate long distances from the power source. With this in mind, the Backpack allows the user to independently move anywhere across the jobsite without this restriction.



TECHNICAL DATA

MODEL	WEIGHT (Kg)	POWER (CV)	MOTOR	FUEL	ENGINE CAPACITY CC	SPEED (r.p.m)
BACKPACK	7	1.6	HONDA GX 35 4T	GASOLINE	35.8	10,000

» Centrifugal Clutch.

AX HEADS

MODEL	DIAMETER (mm)	LENGTH (mm)	WEIGHT (Kg)	SPEED (r.p.m)	PERFORMANCE m³/h
AX 45	45	325	3	9,500	25



- » Oversized eccentric.
- » 4 bearings lubricated with oil and a double lock.
- » Alternative poker sizes are available for use with the Backpack but the performance will reduce slightly.

FLEXIBLE TRANSMISSIONS

MODEL	LENGTH (m)	WEIGHT (Kg)
TDX-TDXE 2	2	4
TDX-TDXE 3	3	5



- » High quality, reinforced hose.
- » The exterior of the hose has been vulcanized for added protection.



HIGH FREQUENCY M-AFP

The motor in head pokers from ENAR offer the following benefits:

- A safe voltage of 42v.
- Thermally protected stator.
- Oversized motor.
- Oil lubrication for high performance and longevity.
- Poker tip and bottle made with hardened metal.

Designed and manufactured in Europe for quality and efficiency

Manufactured using high quality materials guaranteed to provide high resistance and avoid loosening or air gaps.

Versatile

A complete range of models, all with a 10m cable and 5m drive shaft which can be connected to any ENAR converter for 42v. (For more information look at the AFE, AFG-AFD and BOXEL products) The high frequency vibrators are the only option available the surpass that of a standard mechanical poker and provide a precise and stable 12,000rpm.



+ IP67

Protection against rain and dust.

Air tight housing preventing dirt and rain from entering inside the motor or electronic board.



+ Effective

Optimum results.

The most powerful and stable vibration available, surpassing that of mechanical vibrators.



+ Adaptable

For every job type.

Available in differing models, sizes and lengths to cover your every working need.



+ High Performance

Consistent results.

A product that is ideal for long working hours and tough jobs that generates 45 m3/h.



TECHNICAL DATA

MODEL	DIAMETER (mm)	LENGH (mm)	AMPERAGE (A)	WEIGHT (Kg)	PERFORMANCE (m³/h)
M38 AFP	38	370	8	12	Up to 20
M5 AFP	50	365	10.5	14	Up to 30
M6 AFP	58	380	15	15	Up to 35
M7 AFP	65	370	22	18	Up to 40
M8 AFP	75	400	18	20	Up to 45

» Connection: 42V/3~200Hz .

» Vibration frequency: 12,000vpm.

» Lengths: 10m cable and 5m drive shaft with other lengths available upon requested

» Reinforced: optional rubber poker tip available.

» The 240Hz connection is also available upon requested.



HIGH FREQUENCY PISTOL

The Pistol vibrators from ENAR provide the same benefits as the AFP series.

- Thermal protection for the stator.
- Oversized motor.
- Lubricated using oil for high performance and benefits.
- Hardened head and neck on the concrete vibrator.
- No maintenance needed.

Versatility

The Pistol has a 15m electric cable and a 0.8m transmission shaft which can be connected to any 42v ENAR converter (for more information see our products: AFE, AFG-AFD, Boxel). This product is recommended for jobs requiring high vibration levels and the freedom to move easily around the jobsite.

Designed & manufactured in Europe

Manufactured using high quality materials which guarantee high resistance and protection.

The vibrations passed through to the user's hand are less than $2,5\text{m/s}^2$ which is reduced to less than $0,5\text{m/s}^2$ with the optional anti-vibration, DAMPER system.



+ Light and manageable

Ideal for horizontal work/forms.

Specially designed for the users comfort so that they may freely move around the jobsite while vibrating concrete.



+ IP67

Protected against dust and rain.

Resistant aluminium housing.

+ Ergonomic

Reduction of vibrations fed through to the user's hand.

The optional anti-vibration system that reduces the vibrations felt by the user to 0.5m/s^2 .



+ High performance

Motor in head, high performance vibrator.

Ideal for intensive jobs. Offering a high performance of $40\text{m}^3/\text{h}$.



TECHNICAL DATA

MODEL	DIAMETER (mm)	LENGTH (mm)	AMPAGE (A)	TOTAL WEIGHT (Kg)	VIBRATIONS TO HAND WITHOUT DAMPER (m/s ²)	VIBRATIONS TO HAND WITH DAMPER (m/s ²)	PERFORMANCE (m ³ /h)
MP38 AFP	38	370	8	10	1.18	0.34*	Up to 20
MP5 AFP	50	365	10.5	12	2.02	0.46*	Up to 30
MP6 AFP	58	380	15	14	1.95	0.39*	Up to 35
MP7 AFP	65	370	22	16	2.44	0.49*	Up to 40

» Connection: 42V/3~200Hz.

» Frequency: 12000 v.p.m.

» 0.8m transmission with 15m cable (other lengths available).

» Optional VAS for anti-vibration to counter white knuckle.

» Optional rubber head for the poker.

» Connections for 240Hz converter are also available.

*Optional anti-vibration system VAS



SUITCASE AFE

The AFE tubular converters are perfect for high intensive Jobs that require consistently high performing equipment. The ENAR range of AFE converters allow the user to use various sizes of power all at the same time. In order to meet the needs of several worksites, ENAR offers the Tubular AFE converter in single-phase (230v 1~50Hz) and three-phase (400v 3~50Hz).

Designed, developed and manufactured in Europe

Using high quality materials means that the user can use it confidently knowing it is resistant and well protected (IP44).



+ Great Motor Protection

Automated disconnection.

As well as protecting the motor through means of high quality housing, the motor also has a self-disconnecting switch. When the sensor detects an electrical surge, the switch disconnects to protect the motor, meaning it won't burn out.



+ Maneuverability

Small suitcase design.

It has the shape of a suitcase with a firm handle to carry around the jobsite. Making this converter much lighter and easier to transport than its competition.



+ Complete range

Both single-phase and 3-phase connections.

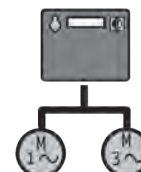
A range to cover all needs. With both single and 3-phase along with varying power levels and 1 or 2 plugs, the job can be completed without adapting to the limited capability of the converter.



+ Great Motor Protection

Automated disconnection.

As well as protecting the motor through means of high quality housing, the motor also has a self-disconnecting switch. When the sensor detects an electrical surge, the switch disconnects to protect the motor, meaning it won't burn out.



+ Complete range

Both single-phase and 3-phase connections.

Thanks to its high-quality materials and its robust cage, the AFE series means can survive even the toughest worksites. The cage also allows for comfortable transportation due to it being easier to lift and carry.

TECHNICAL DATA

MODEL	WEIGHT (Kg)	N° OUTPUT	INPUT		OUTPUT		Maximum Possible Connection of Pokers				
			POWER	VOLTAGE/FREQUENCY	POWER	VOLTAGE/FREQUENCY	M38	M5	M6	M7	M8
AFE 1000M P	17	1	1.3 KW 6A	230V 1~50Hz	1.0 KVA 15A	42 V3~200 Hz	1	1	1	-	-
AFE 2000M P	27	2	2.0 KW 9A	230V 1~50Hz	1.6 KVA 23A	42 V3~200 Hz	2	2	1	1	1
AFE 1000 P	15	1	1.3 KW 2.8A	400V 3~50Hz	1.0 KVA 15A	42 V3~200 Hz	1	1	1	-	-
AFE 2000 P	25	2	1.7 KW 4A	400V 3~50Hz	1.8 KVA 25A	42 V3~200 Hz	2	2	1	1	1

- › Input Voltage/Additional 3-phase options: 230v 3~ 50Hz / 230v 3~ 60Hz.
- › Input Voltage/Additional Single-Phase Options: 230v 1~ 60Hz / 110v 1~ 50Hz / 110v 1~ 60Hz.
- › Converter resistant to water splashes (IP44).
- › High quality magnets that do not demagnetise.
- › 5m cable.
- › Possibility to modify the product for the individuals needs.



AFE 1000



AFE 2000

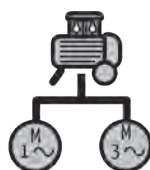


CONVERTER AFE

The AFE tubular converters are perfect for high intensive Jobs that require consistently high performing equipment. The ENAR range of AFE converters allow the user to use various sizes of power all at the same time. In order to meet the needs of several worksites, ENAR offers the Tubular AFE converter in single-phase (230v 1~50Hz) and three-phase (400v 3~50Hz).

Designed, developed and manufactured in Europe

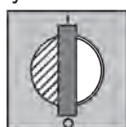
The reason for this is to ensure the high quality of the product. Using high quality materials means that the user can use it confidently knowing it is resistant and well protected (IP44).



+ Durability

It has been designed to be tough.

Thanks to its high-quality materials and its robust cage, the AFE series means can survive even the toughest worksites. The cage also allows for comfortable transportation due to it being easier to lift and carry.



+ Great Motor Protection

Automated disconnection.

As well as protecting the motor through means of high quality housing, the motor also has a self-disconnecting switch. When the sensor detects an electrical surge, the switch disconnects to protect the motor, meaning it won't burn out.



+ No waiting!

Low risk voltage levels.

The AFE range has the option of 1, 2, 3 and even 4 outlets, this means no need to stand around waiting for a socket.



+ SAFER!

Baja tensión de seguridad.

Although the input to the motor is either 230v or 400v, this clever motor separates the high and low voltages. This means that the output current going through the user's hands, is only 42v. No shocks, no problems.



+ Complete Range

For both single-phase & 3-phase.

Thanks to its varying motor sizes for both single and 3-phase, the ENAR range covers all your needs..



TECHNICAL DATA

MODEL	WEIHT (Kg)	N° OUTPUT	INPUT		OUTPUT		Maximum Possible Connection of Pokers				
			POWER	VOLTAGE/FREQUENCY	POWER	VOLTAGE/FREQUENCY	M38	M5	M6	M7	M8
AFE 1000MT	23	1	1.3 KW 6A	230V 1 ~ 50Hz	1.0 KVA 15A	42 V3 ~ 200 Hz	1	1	1	-	-
COMPACT 1000M	20	1	1.3 KW 6A	230V 1 ~ 50Hz	1.0 KVA 15A	42 V3 ~ 200 Hz	1	1	1	-	-
AFE 2000T	30	2	2.8 KW 4A	400V 3 ~ 50Hz	1.8 KVA 25A	42 V3 ~ 200 Hz	2	2	1	1	1
AFE 2000MT	32	2	2.0 KW 9A	230V 1 ~ 50Hz	1.6 KVA 23A	42 V3 ~ 200 Hz	2	2	1	1	1
AFE 2500T	34	3	4 KW 6A	400V 3 ~ 50Hz	2.5 KVA 35A	42 V3 ~ 200 Hz	5	3	2	2	2
AFE 3500	29	3	6KW 8A	400V 3 ~ 50Hz	3.5 KVA 50A	42 V3 ~ 200 Hz	8	4	3	2	2
AFE 4500	68	4	7 KW 10A	400V 3 ~ 50Hz	4.5 KVA 61A	42 V3 ~ 200 Hz	9	5	4	3	4
AFE 6000	75	4	8KW 12A	400V 3 ~ 50Hz	6 KVA 82A	42 V3 ~ 200 Hz	10	6	5	4	4

- » Optional customisation of input voltage/frequency 230v single-phase 60Hz, 110v single-phase 50Hz or 110v single-phase 60Hz.
- » Electronic junction box that is protected against splashed and dust (IP44).
- » High quality magnets that maintain their strength and don't weaken.
- » Imanes de alta calidad, no se desimantan.
- » 5m electric cable.
- » Steel protective frame with a width of 30mm diameter per tube.
- » Optional transport trolley available.



serie COMPACT



AFE 1000MT/2000T/2000MT/2500T



AFE 3500/4500/6000

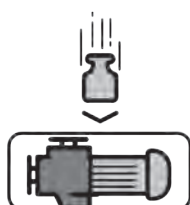


CONVERTER AFG-AFD

The AFG-AFD series from Enar offers equipment perfect for obtaining high performance and finishing on intensive jobs. It also allows for several pokers to be used simultaneously. The available models come as petrol (Honda) or Diesel (Yanmar, Lonbardini) meaning it covers more of the user's needs.

QUALITY & EFFICIENCY

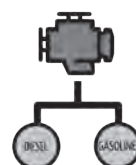
Oversized motors for intensive jobs. A cage built to protect the motor and allow easier transportation.



+ Robust

Designed to withstand pressure.

The cage and shock absorbers provide a high level of protection to the motor.



+ Complete Range

Both petrol and diesel motors.

The range of AFG-AFD motors cover the user's needs with both Petrol and Diesel motors available upon request.



+ No Plug Socket Needed

Improved movement on the job.

The AFG-AFD is ideal for jobs where electricity is not available.



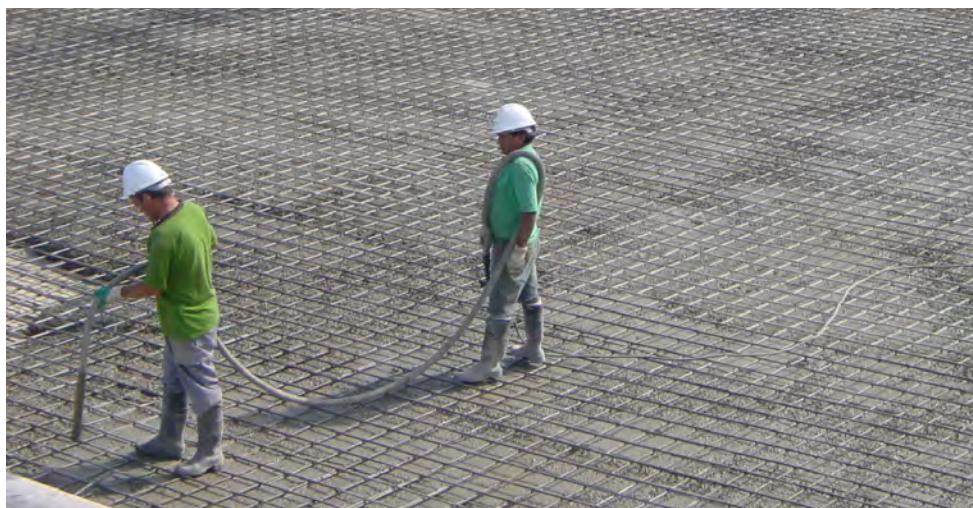
TECHNICAL DATA

MODEL	WEIGHT (Kg)	N° OUTPUT	ENGINE	OUTPUT		Maximum Possible Connection of Piers				
				POWER	VOLTAGE/FREQUENCY	M38	M5	M6	M7	M8
AFGH 2000	29	2	HONDA GX160 5.5 cv/Hp	1.8KVA 25A	42 V3~200Hz	2	2	1	1	1
AFDY 2000	31	2	YANMAR L48AE 4.7 cv/Hp	1.8KVA 25A	42 V3~200Hz	2	2	1	1	1
AFDL 2000	21	2	LOMBARDINI 225 4.8 cv/Hp	1.8KVA 25A	42 V3~200Hz	2	2	1	1	1
AFDL 6000	69	4	LOMBARDINI 15 LD440 9cv/Hp	6KVA 82A	42 V3~200Hz	10	6	5	4	4

» Generators with other motors are available on request.

» Low voltage at 42v.

» No electronic connection required .



CONVERTER BOXEL

Designed & Manufactured in Europe for Quality & Efficiency

The design and manufacturing of the Boxel comes after years of research and development, its first-class components along with the quality control it is put through make the Boxel fir the highest quality equipment to choose.

"Eco-friendly" Design

Thanks to its electronic conversion instead of the standard mechanical conversion in previous models, combined with parts that don't wear and tear nor need maintenance, this product wastes less energy and provides less noise pollution as it runs silently.



+ Robust

Resistant, shockproof, lightweight and easy to use.

Designed to be lightweight and robust at the same time. With a highly resistant hardened aluminium casing and a system that communicates with the user, this product.



+ Efficient & Ecological

Less Energy Wasted

Less environmental damage due to its high level of energy efficiency. Generating less heat, therefore needing less energy for ventilation means that the product has a reduced sized compared to other converters.



+ No Maintenance Required

No Spare Parts, No Wear & Tear.

The complete electronic conversion system simplifies the maintenance needed for the Boxel. This means that there is no scheduled maintenance after a set amount of hours or certain usage.



+ Light and Compact

Reduced weight and volume

The new Boxel comes in at 70% lighter than its mechanical converter competition as well as being smaller in size.



+ Performance

Intelligent system stabilising voltage and frequency.

The load generated by the concrete often creates pressure on the poker head and increases the amps. The unique Boxel system recognises when this happens and compensates for this maintain a secure frequency and voltage.



+ Reliable

No risk of electric shock.

The Boxel runs at 42v and has 3 protective measures against:

- ✓ Overvoltage.
- ✓ Overcharge.
- ✓ Overheating .



TECHNICAL DATA

MODEL	DIMENSIONS(cm)			WEIGHT	N° PLUGS	INPUT			OUTPUT		
	LEGTH	WIDTH	HEIGHT			POWER	CURRENT	VOLTAGE	POWER	CURRENT	VOLTAGE
BOXEL 215	48	31	18	9	2	1.7KW	7.5 A	230 V 1~50 Hz	1.5KVA	21 A	42 V 3~200 Hz
BOXEL 225	53	31	18	10	2	2.75KW	12.5 A	230 V 1~50 Hz	2.5KVA	35 A	42 V 3~200 Hz
BOXEL 325	53	31	18	10	3	2.8KW	12.5 A	230 V 1~50 Hz	2.5KVA	35 A	42 V 3~200 Hz

CONFIGURATION

MODEL	ENAR M38 AFP	ENAR M5 AFP	ENAR M6 AFP	ENAR M7 AFP	ENAR M8 AFP
BOXEL 215	2	2	1	1	1
BOXEL 225	2	2	2	1	2
BOXEL 325	3	3	2	1	2

- » The Boxel is an electronic system with waterproof protection (IP44).
- » The machine comes with a protective frame that used aluminium bars assembled with rubber ends
- » 5m cable (Other lengths available upon request).
- » Ability to use multiple pokers and sizes at the same time.
- » Product customization is available upon request.



ELECTRONIC CONVERTER SPYDER PRO

The high frequency Spyder Pro is a compact and cost efficient piece of equipment. Due to the converter and vibrator being an all in one package you don't need to purchase the equipment in 2 separate parts. The Spyder Pro offers many of the same features as the AFP high frequency series, but with the added benefit that it is a complete product that doesn't require an external converter. As per the AFP series.

VERSATILITY

The Spyder Pro comes with a standard 15m electric cable and a 5m transmission that connects directly into a 230v/110v power source. This is a very powerful piece of equipment which is also reliable and safe on the job site. Additionally, thanks to its size and weight, it is easy to move around the site while in use.



+ Safe & reliable

It's failsafe automatically turns the machine off to prevent electric shocks to the user.

Protection against:

- ✓ Overload/Overcurrent
- ✓ Overheating.
- ✓ Short-circuiting
- ✓ Phase Failure.
- ✓ Current Leakage (In the converter/software).
- ✓ Optional PRCD for added user protection (Detects current leakage before being converted).



+ Zero Maintenance

No spare parts needed, no waste generated.

Thanks to the Spyder's electronic converter system and IP67 design, there are no parts that need to be replaced unlike the standard mechanical vibrator. NO MORE CARBON BRUSHES!



+ Lightweight

Super compact and easy to handle.

Allowing it to be used in many different working conditions and job site layouts.



+ IP67

Protection against the rain and dust/dirt.

The aluminium housing provides protection against external agents such as dust, rain and dirt.



+ No Noise Pollution

Less than 80dB.

Making this an ideal piece of equipment for when noise pollution is a restriction. This can often be the case when working on sites that need to consider local residents.

TECHNICAL DATA

MODEL	DIAMETER (mm)	LENGTH (mm)	AMPAGE (A)	POWER INPUT (KW)	TOTAL WEIGHT (Kg)	PERFORMANCE (m³/h)
SPYDER PRO 230V-38*1	38	370	8	0.75	14.6	Up to 20
SPYDER PRO 230V-50*1	50	365	12	1.1	18.6	Up to 30
SPYDER PRO 230V-60*1	58	420	15	1.5	20.6	Up to 35
SPYDER PRO 230V-70*1	65	400	22	1.9	22	Up to 40

› *1 Input voltage/frequency: 230V~50/60Hz.

› 110V~50/60Hz is also available on request.

› Vibrations per minute at 12,000 rpm.

› Weight: 3.4Kg.

› Has a slow start up to avoid peaks in current, which prevents damage to the motor and poker when first turned on.



PRCD system (Protective Residual Current Device) is an optional addition, this option provides the added security that when an input leakage of 10mA is detected, the system will automatically switch off preventing the leak from reaching the hands of the user.



ELECTRONIC CONVERTER i-Spyder

The i-Spyder is a compact and efficient piece of equipment that has an electronic converter connected to a high frequency vibrator. The i-Spyder provides the same benefits as the AFP series but without the need for a separate generator/converter.

- Thermal protection for the stator.
- Oversized motor.
- Lubricated using oil for high performance and benefits.
- Hardened head and neck on the concrete vibrator.
- No maintenance needed.

VERSATILITY

The i-Spyder has a 15m electric cable and a 5m transmission shaft which connects directly into a single-phase 230v supply. This is a powerful, trustworthy and safe piece of equipment ideal for the jobsite. It's size and weight make it very manageable and easy to use in difficult to access places and also on the move.



+ Secure and reliable

Security shutdown.
Protected against electric shocks.

Protection against:

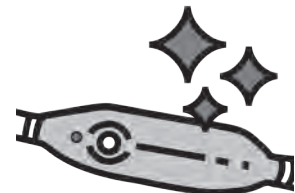
- ✓ Electrical surcharges/overload.
- ✓ Overheating.
- ✓ Short-circuiting
- ✓ False starts.
- ✓ Current leakage.
- ✓ PRCD Optional addition.



+ Zero maintenance

No maintenance required.
No environmental waste.

Thanks to the electronic conversion system, the i-Spyder has no parts that will wear out and require replacement.



+ Isolated housing

Clean, slick and ergonomic design.

The i-Spyder has a modern and stylish design which comes with the transmission shaft integrated into the design, which prevents the buildup of dry concrete affecting the performance of the machine.



+ IP67

Protected against dust and rain.

Resistant aluminium housing.



+ No noise complaints

Under 80dB of sound.

Perfect when working under the conditions of a job that has sound restrictions.



TECHNICAL DATA

MODEL	DIAMETER (mm)	LENGTH (mm)	AMPAGE (A)	POWER INPUT (KW)	TOTAL WEIGHT (Kg)	PERFORMANCE (m ³ /h)
I-SPYDER 230V-38	38	370	8	0.75	14.6	Up to 20
I-SPYDER 230V-50	50	365	12	1.1	18.6	Up to 30
I-SPYDER 230V-60	58	420	15	1.5	20.6	Up to 35
I-SPYDER 230V-70	65	400	22	1.9	22	Up to 40

» Power input/Frequency: 230v~50/60Hz.

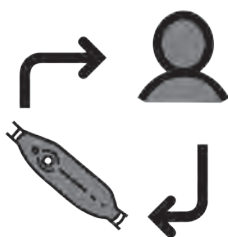
» Also, available in 110v~50/60Hz.

» 12,000 vpm.

» Progressive start up to prevent high current through the poker, avoiding damage.

» Converter weight: 3.4kg.

Also available with a push button instead of switch which comes with a tri-colour LED to communicate any issues to the user.



The PRCD system (protective residual current device) is optional. This system immediately disconnects the machine if there is a current leakage of 10mA. This is an additional protection available for the user and for the equipment.



PENDULAR VG

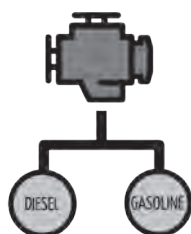
The VG series from ENAR for perfect for high performance under intensive working conditions.

The VG series is available with two differing couplings (bayonet or hexagonal).



Quality & Efficiency.

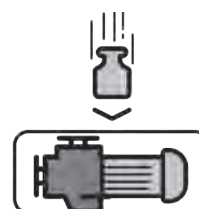
Oversized motors for intensive work. Fitted with a robust frame to protect the motor and to aide transportation. Comes with the option of varying motors: Petrol (Honda/Robin) and Diesel (Yanmar/Lombardini/Hatz/Robin), all adapted to the needs of the client.



+ Wide Range

Petrol & Diesel Motors.

The wide range of VG motors cover all of the user's needs. With the availability of both Petrol and Diesel.



+ Resistant

Shockproof design for strength and robustness.

Robust cage with shock absorbers incorporated for the best possible protection of the converter .



+ Performance

High performance motors.

The range of ENAR motors are oversized in order perform at optimum levels during intensive working loads.



+ No PLUGS!

Provides mobility.

The VG range is designed for jobs where no plug sockets or electrical ports are available.

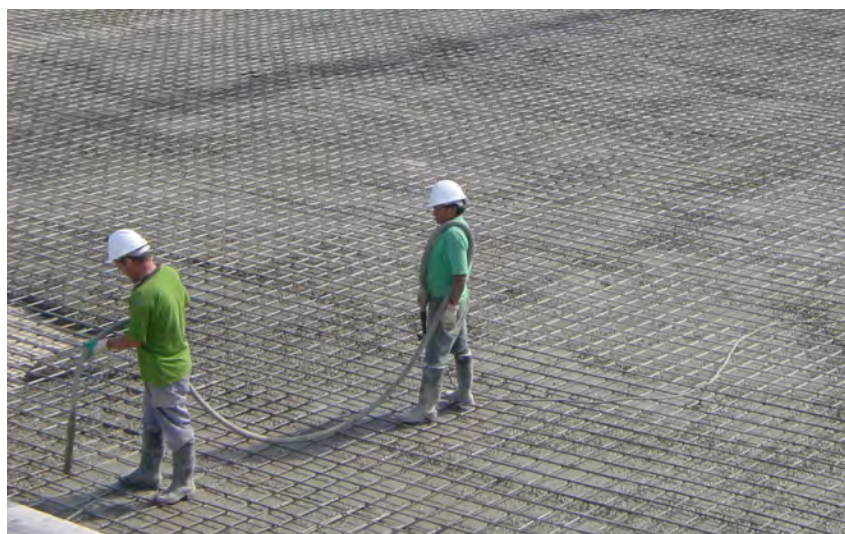


TECHNICAL DATA

MODEL	WEIGHT (Kg)	FUEL	MOTOR	POWER (CV)
VGR 4	19.5	Gasoline	ROBIN EY15 3D	3.5
VGH 5	21.5	Gasoline	HONDA GX 160	5.5
VGR 6	22	Gasoline	ROBIN EX-17 DU	6
VGE 5	21.5	Gasoline	ENAR G160	5.5
VHD	38	Diesel	HATZ IB 20	4.6
VYD	35	Diesel	YANMAR L48	4.7
VRD	38	Diesel	ROBIN DY 23	4.8
VLD	40	Diesel	LOMBARDINI 15LD-315	6.8
VED-D	30.5	Diesel	ENAR DIESEL	5.5



- » Oversized motors.
- » Doesn't require an electrical connection.
- » Strong steel frame.
- » Two types of coupling (Bayonet & Hexagonal), other types are also available.



PENDULUM VIBRATOR VPA

The VPA series offered by Enar are perfect machines for Jobs that require a pendulum poker as they provide the necessary performance needed for intensive work.

The machine comes with differing couplings that can be applied to the needs of the job.

QUALITY & EFFICIENCY

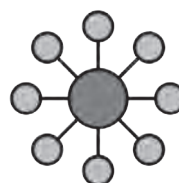
Oversized motors provide the capacity to work at a high level on intensive jobs. The housing is robust due to its resistance to falling from heights and things falling on it, plus it's IP44 standard meaning it will survive dust particles and water from splashes entering into the motor. It comes with a variety of plugs and motor drives adapting to each country (single-phase, 3-phase and 50/60Hz).



+ Robust!

Designed to withstand the work site.

Robust housing designed to withstand small falls and items falling on top of the motor as well as dust and water splashes entering into the motor.



+ Versatile

Thanks to its range.

The VPA range is available with several sizes of poker head from 25mm to 70mm meaning the user has a wide range of choices to complete their job to the best standard.

+ Secure

Isolated Motor.

The range of motors provided for the VPA come with a housing with a resistant plastic/glass fiber mix to provide maximum strength while avoiding added weight to the product.

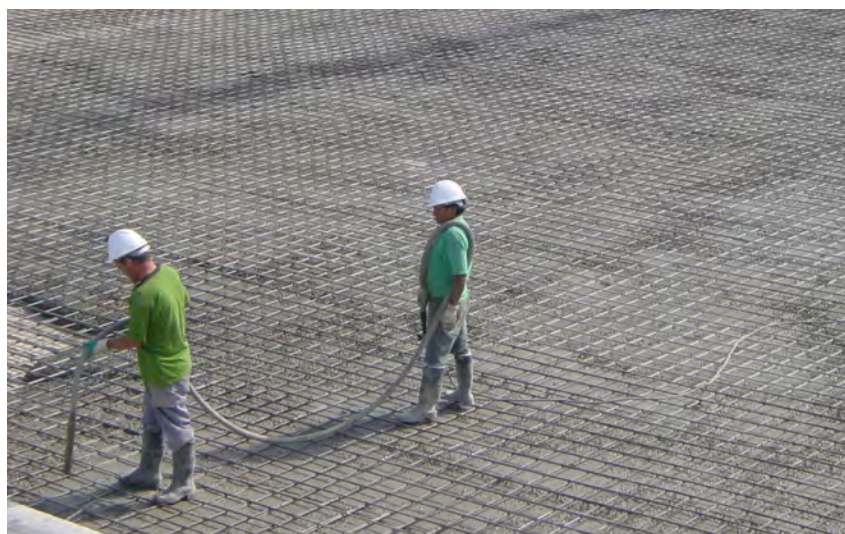


TECHNICAL DATA

MODEL	POWER (CV)	VOLTAGE (V)	FREQUENCY (Hz)	DIMENSIONS (LxWxH mm)
VPA D	1.5	400 3~	50	440x190x340
VPAM D	1.5	230 1~	50	440x190x340
VPAM H	1.5	230 1~	50	440x190x340
VPAME D	1.5	115 1~	50	440x190x340



- » 3-phase motor available at 400v 3-phase 50Hz, alternatively available upon request as 230v 3-phase 50Hz.
- » Motor speed: 3,000RPM.
- » Weight: 12.1Kg.
- » 60hz connection available upon request.
- » 3-phase motor provided with a clutch to prevent it from turning in the opposite direction.
- » Different plugs available upon request.



TRANSMISSIONS & POKER HEAD PENDULUM

The TNR Transmissions and ANR poker heads from ENAR provide the absolute optimal compaction of concrete, making it easier and quicker to vibrate the concrete to a high quality. The range is also provided with a variety of couplings which connect to electric, petrol and diesel motors.

Assured Range.

Every need is covered by ENAR as the ANR/TNR series ranges from 25mm to 75mm poker heads and 4m to 9m transmissions.



+ Adapts to the job!

Made to last.

The ANR pokers are available with a rubber tip to increase the durability and is also well protected against damage by the mechanical system.

+ Robust and Durable

Y robusto.

La gama ENAR incorpora refuerzo de caucho en los puntos de mayor esfuerzo.
Diseño robusto del sistema mecánico.

**GASOLINE/
DIESEL/
ELECTRIC**

+ Cost Effective

And quality assured.

The TNR/ANR range is cheaper than the High frequency range but offers all the quality in the finish of the concrete vibrated.



TECHNICAL DATA

POKER HEADS ANR

MODEL	DIAMETER (mm)	LENGTH (mm)	WEIGHT (Kg)	SPEED (r.p.m)	PERFORMANCE (m³/h)	TRANSMISSIONS
ANR25	25	350	1.2	16,000	10	TNR4-25/TNR6-25
ANR38	38	375	2.5	12,000	15	TNR4-38/TNR6-38
ANR48	48	445	4.3	12,000	25	TNR4-48/TNR6-48
ANR58	58	450	6.4	12,000	30	TNR4-58/TNR6-58
ANR70	70	510	7.5	12,000	35	TNR4-70/TNR6-70

» Axle rotates at 3,000RPM with the Pendular system reaching 12,000RPM.

» Wide range of connections.

TRANSMISSIONS TNR

MODEL	LENGTH (mm)	WEIGHT (Kg)
TNR4-25	4	6
TNR6-25	6	8
TNR4-38	4	11.1
TNR6-38	6	15.8
TNR4-48	4	11.1
TNR6-48	6	15.8
TNR4-58	4	11.1
TNR6-58	6	15.8
TNR4-70	4	11.1
TNR6-70	6	15.8



» Poker end of the transmission is vulcanized for poker heads 48, 58 and 70mm.

» High quality transmission hose, 26mm diameter (ANR25) and 36mm (all other sizes).

» Different couplings available on request.



TYPE D (universal)



TYPE A (Australia)



TYPE H (hexagonal 10mm)



PNEUMATIC VIBRATOR PNU

The pneumatic vibrators from ENAR are the best option for highly intensive Jobs when an air compressor is available. This piece of equipment is very practical as it has a universal connection and a metal valve which can be rotated to control the air pressure that powers the vibrating poker head. An oil deposit is integrated into the handle to ensure optimum lubrication of the vibrator.

No job too big or too small!

The PNU range offers the largest range of poker sizes with its dimensions ranging from 25mm to 100mm. Standard length hoses for the PNU are 2m but are available up to 10m.



+ No surprise shocks!

No electricity, no shock spare parts prices!

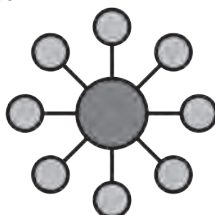
The simplicity of this product means that there are very few parts that require maintenance. Overall this is considered a safer product due to it being air pressured meaning you don't need a plug, thanks to its connection to a generator.



+ Durability

A robust and strong piece of equipment.

The parts for the PNU have been made specifically to perform at the highest level but also to be tough! With almost no gaps inside the poker itself it means that it is able to withstand more impacts.



+ Versatility

Widest range of sizes.

Our most versatile vibrator is the PNU due to its large range of sizes, this means it can be adapted entirely to the job at hand from small scale jobs to large scale.



TECHNICAL DATA

MODEL	DIAMETER (mm)	LENGTH (mm)	WEIGHT (kg)	SPEED (r.p.m)	CENTRIFUGAL FORCE (N)	CONSUMPTION (l/min)	PERFORMANCE (m ³ /h)
PNU 25	25	220	2.5	20,000	700	400	4
PNU 40	40	300	4.5	19,000	2,000	500	14
PNU 50	50	300	6.5	18,000	3,400	600	22
PNU 65	65	340	10	17,000	9,000	1,000	32
PNU 75	75	360	14	15,000	14,500	1,250	40
PNU 100	105	395	23	13,500	22,000	2,100	45

- » Standard transmission length is 2m, however other lengths are available.
- » 6 bars is the recommended pressure to work with.
- » No particular maintenance is required to for this product.
- » The PNU uses an oil deposit to extend the life span of the product (recommended to refill at least once a week).
- » Aluminium connection and pressure control.



EXTERNAL VIBRATORS

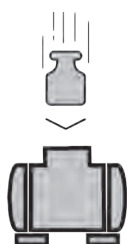
ENAR offers a wide range of external vibrators, individually designed for differing modes of application such as: formwork, prefabrication/ preforming concrete, the ease of materials being transported through funnels and belts for example and several other industrial uses.

The 3 ranges of External Vibrator offered by ENAR are:

- » Single-Phase external vibrators which plug directly into the mains supply.
- » 3-Phase external vibrators which plug directly into the mains supply.
- » External vibrators to be connected to high frequency converters .

QUICK CONNECTION CLAMPS

Available in 2 types of clamps, adapted to the main manufacturers of clamps.



+ Resistant

Designed to withstand falls and blows.

Highly resistant aluminium housing, allowing for a long-life span in tough working conditions.



+ IP65

Protection against dust and rain.

Insulated housing.



+ Complete range

A variety of models.

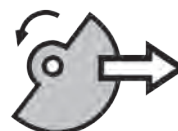
A complete range of single-phase, three-phase and high frequency external vibrators.



+ Quick coupling

Save time setting up the external vibrator.

Several clamps available which are compatible with multiple frameworks.



+ Centrifugal force

From 60kg to 1500kg.

The variety of models and modification of eccentrics meet the requirements of a wide range of working needs.

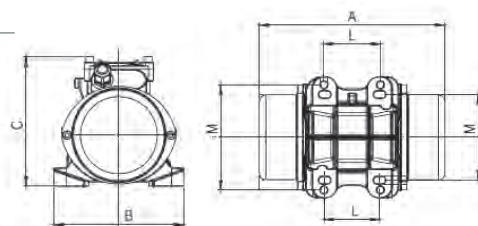


TECHNICAL DATA

VET RANGE

MODEL	OSCILLATIONS (rpm)	CENTRIFUGAL FORCE (Kg)	NOMINAL CURRENT (A)	DIMENSIONS AxBxC (mm)	FIXING DIMENSIONS LxM (mm)	CABLE LENGTH (m)	WEIGHT (Kg)
VET 150*	3000	187	0.35	212x150x150	70x106/130	1	5.3
VET 300*	3000	310	0.58	260x166x184	90x125/140	1	8.6
VET 600	3000	668	0.98	288x190x205	100x160	1	21

Connection: 400V 3~50Hz



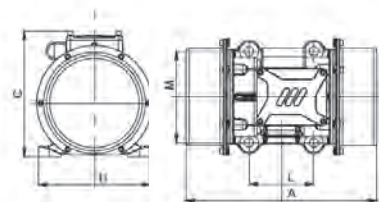
VEM RANGE

MODEL	OSCILLATIONS (rpm)	CENTRIFUGAL FORCE (Kg)	NOMINAL CURRENT (A)	DIMENSIONS AxBxC (mm)	FIXING DIMENSIONS LxM (mm)	CABLE LENGTH (m)	WEIGHT (Kg)
VEM 60	3000	66	0.68	177x125x120	63.5x85÷106 63.5x82÷102	2	4.75
VEM 150*	3000	187	0.73	212x150x150	70x106/130	2	5.3
VEM 300*	3000	310	1.15	260x166x184	90x125/140	2	8.6

Connection: 230V 1~50Hz

VEAF RANGE

MODEL	OSCILLATIONS (rpm)	CENTRIFUGAL FORCE (Kg)	NOMINAL CURRENT (A)	DIMENSIONS AxBxC (mm)	FIXING DIMENSIONS LxM (mm)	CABLE LENGTH (m)	WEIGHT (Kg)
VEAF 650*	6000	670	7.3	249x160x126	125x90	15	6.5
VEAFP 1500	6000	1511	26	314x216x218	100x180	1	21.8

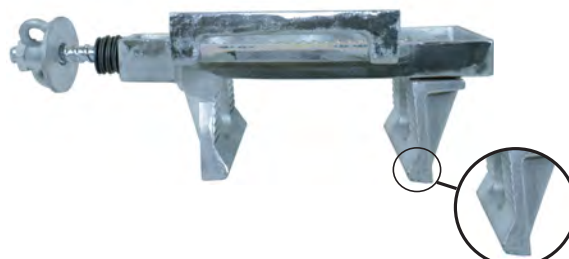


CLAMPS

The models which have a * are compatible with the connect coupling from ENAR.



Clamp A



Clamp B

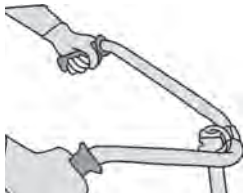


VIBRATING SCREED TORNADO

The Tornado vibrating screed is an exceptional option when choosing to vibrate concrete. Enar guarantees an optimum level of concrete compaction regardless of the type of concrete being vibrated. The profiles used on the Huracan are resistant and glide comfortably across concrete due to its floatability.

Designed & Manufactured in Europe for Quality and Efficiency

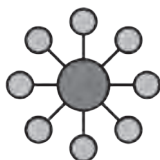
Robust, easy to use and ergonomic are words more frequently used when describing the Tornado from Enar. The rubber handles conform to many regulations and also provide a reduced level of vibrations to the user. The range includes either petrol or electric motors.



+ Comfortable to Manage

Reliably simple.

The Enar Tornado has handles that are designed to reduce the vibrations to the users hands making it more comfortable when being used.



+ Complete Range

Variety of models.

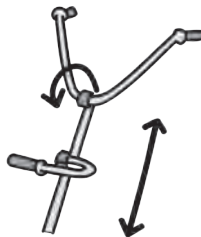
The range provided by Enar in the Tornado range means it is easier to facilitate the user's needs. This is achieved through its range of profile lengths and differing motors.



+ Light

And easy to use.

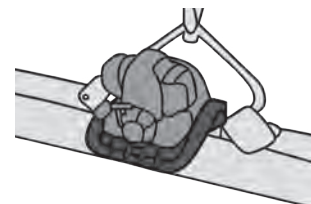
This product is easily used by one person on a job site thanks to its size and weight. This also allows for better transportation of the product.



+ Economic

In price and quality.

The handle for the Tornado is adjustable in height making it better suited to the individuals needs and also easier to store away/transport.



+ Motor Support

Restricted Vibrations.

As well as providing protection to the screed, the motor support reduces vibration by up to 50% increasing the product life and reducing the vibrations passed onto the user.



TECHNICAL DATA

PETROL SCREEDS

MODEL	ENGINE	POWER (cv)	FUEL	FUEL TANK (L)	FREQUENCY (vib/min)	CENTRIFUGAL FORCE (N)	WEIGHT (Kg)
TORNADO H	HONDA GX25 4t/st	1.1	Gasoline	0.5	Up to 9,000	1,500	15

ELECTRIC SCREEDS

MODEL	ENGINE	POWER (W)	FREQUENCY (vib/min)	CENTRIFUGAL FORCE (N)	WEIGHT (Kg)
TORNADO E	External Vibrator 230V 1~	125	3,000	700	10.5
TORNADO E TURBO 230V	Vibrator 230V 1~	500	12,000	1,300	12
TORNADO E TURBO 115V	Vibrator 115V 1~	500	12,000	1,300	12



PROFILES

LENGTH (m)	WEIGHT (Kg)
1.5	4.6
2	6.2
2.5	7.8
3	9.3
4	12.5



- » High resistance, aluminium profiles.
- » Rounded ends to the profiles.
- » Strict flatness control while in use.
- » Profile base of 200mm/20cm to obtain a greater control and glide.
- » Profiles available from 1.5m to 4m .

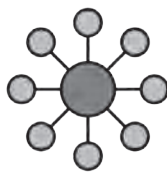


VIBRATING SCREED QX

The QX from Enar is the perfect selection for a product with a great price to quality ratio. The profiles for the QX are lightweight and highly resistant ensuring a long life. They glide comfortably across the concrete surface and thanks to its lightweight physique and shape it provides greater coverage across the surface area.

Designed & Manufactured in Europe for Quality and Efficiency

The Mistral stands out most for its very lightweight design. Providing high performance and results from a cost effective and lightweight product. As well as being provided with a Honda GX25 petrol motor, the QX is available with various electric motors too ideal for the profiles ranging from 1.5m to 4m.



+ Complete Range

Variety of models.

The options provided by Enar in the QX range means it is easier to facilitate the user's needs. This is achieved through its range of profile lengths and differing motors.



+ Economic

In price and quality.

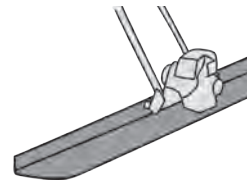
The price of this product is far greater economically than its counterparts as it has a basic design without losing the quality finish of the concrete. Furthermore, thanks to its simple design a range of electric motors is also available making the adaptability of this product one of its key features.



+ Light

And easy to use.

This product is easily used by one person on a job site thanks to its size and weight. This also allows for better transportation of the product.



+ Without Restrictions

Easy to manoeuvre in small spaces.

Thanks to its design and range of profile lengths it is easy to work with this product while close to walls and pillars.



TECHNICAL DATA

PETROL SCREEDS

MODEL	ENGINE	POWER (CV)	FUEL	FUEL TANK (L)	FREQUENCY (vib/min)	CENTRIFUGAL FORCE (N)	WEIGHT (Kg)
QX H	HONDA EH025 4t/st	1.1	Gasoline	0.5	Up to 9,000	1,500	9.8

ELECTRIC SCREEDS

MODEL	ENGINE	POWER (W)	FREQUENCY (vib/min)	CENTRIFUGAL FORCE (N)	WEIGHT (Kg)
QX E	External Vibrator 230V 1~	125	3,000	700	8
QX E TURBO 230V	Vibrator 230V 1~	500	12,000	1,300	12
QX E TURBO 115V	Vibrator 115V 1~	500	12,000	1,300	12



PROFILES

LENGTH (m)	WEIGHT (Kg)
1.5	4.6
2	6.2
2.5	7.8
3	9.3
4	12.5



- » High resistance, aluminium profiles.
- » Rounded ends to the profiles.
- » Strict flatness control while in use.
- » Profile base of 200mm/20cm to obtain a greater control and glide.
- » Profiles available from 1.5m to 4m.



VIBRATING SCREED MISTRAL

The Mistral from Enar is the perfect selection for a product with a great price to quality ratio. The profiles for the Mistral are lightweight and highly resistant ensuring a long life. They glide comfortably across the concrete surface and thanks to its lightweight physique and shape it provides greater coverage across the surface area.

Designed & Manufactured in Europe for Quality and Efficiency

The Mistral has been designed to have a long-life span. The motor's housing, apart from protecting the motor against damage, also helps to prevent splashes of water and wet concrete from the job getting into the motor. The Mistral comes with a Honda GX25 motor with a range of lightweight profiles from 1.5m to 4m lengths.



+ Durable & Reliable

Thanks to its motor support.

The motor support helps to increase the life span of the Mistral it prevents damage to the motor from water and wet concrete entering the GX Honda motor.



+ Easy to Manage

A simple product structure.

The Mistral is made up of few parts meaning you can disconnect the shaft from the bracket and easily store or transport the product.



+ Easy Access Throttle

Mounted to the shaft close to the user.

The shaft connecting to the bracket of the Mistral is adjustable meaning each user can also adjust how close or far away the throttle is. This is to improve the comfort provided while working on the job site.



TECHNICAL DATA

PETROL SCREEDS

MODEL	ENGINE	POWER (CV)	FUEL	FUEL TANK (L)	FREQUENCY (vib/min)	CENTRIFUGAL FORCE (N)	WEIGHT (Kg)
MISTRAL H	HONDA GX25 4t/st	1.1	Gasoline	0.5	Up to 9,000	1,500	10.7



PROFILES

LENGTH (m)	WEIGHT (Kg)
1.5	4.6
2	6.2
2.5	7.8
3	9.3
4	12.5



- » High Resistant, aluminium profiles.
- » Rounded ends to each profile.
- » Strict control of the profile flatness while working.
- » Profile base of 200mm/20cm to obtain a greater control and glide.
- » Profiles available from 1.5m to 4m .

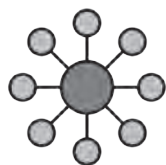


VIBRATING SCREED QZ

The QZ screed works in two different ways thanks to its oscillating system. With a simple twist of the handle, the screed can rotate the profile to be forward or backward facing. The profiles used on the QZ are resistant and glide comfortably across concrete due to its floatability.

Designed & Manufactured in Europe for Quality and Efficiency

The QZ stands out most for its very lightweight design. Providing high performance and results from a cost effective and lightweight product. As well as being provided with a Honda GX25 petrol motor, the QZ is available with various electric motors too, ideal for the profiles ranging from 1.5m to 4m.



+ Complete Range

Variety of models.

The options provided by Enar in the QX range means it is easier to facilitate the user's needs. This is achieved through its range of profile lengths and differing motors.



+ Without Restrictions

Easy to manoeuvre in small spaces.

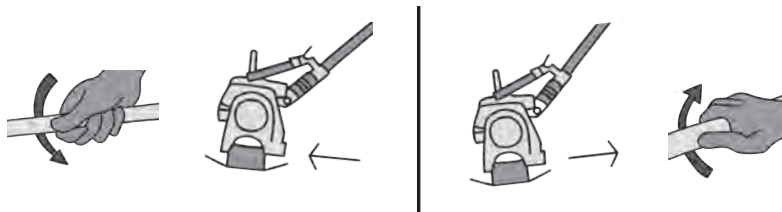
Thanks to its design and range of profile lengths it is easy to work with this product while close to walls and pillars.



+ Better Performance

Thanks to its adaptability.

The screed reduces working time and manoeuvrability thanks to it being able to work in two directions at the twist of a handle.



+ Unique Profile

Oscillating technology.

The uniqueness of this screed is not only the ability to choose between petrol and electric motors but also the multi-directional profile. The handle requires a very simple twist as shown in the pictures to change direction on the spot.



TECHNICAL DATA

PETROL SCREEDS

MODEL	ENGINE	POWER (CV)	FUEL	FUEL TANK (L)	FREQUENCY (vib/min)	CENTRIFUGAL FORCE (N)	WEIGHT (Kg)
QZ H	HONDA GX25 4t/st	1.1	Gasoline	0.5	Up to 9,000	1,500	12.5



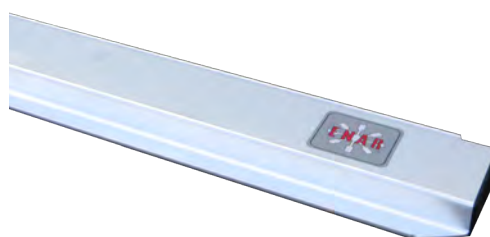
ELECTRIC SCREEDS

MODEL	ENGINE	POWER (W)	FREQUENCY (vib/min)	CENTRIFUGAL FORCE (N)	WEIGHT (Kg)
QZ E	External Vibrator 230V 1~	125	3,000	700	10.5
QZ E TURBO 230V	Vibrator 230V 1~	500	12,000	1,300	12
QZ E TURBO 115V	Vibrator 115V 1~	500	12,000	1,300	12



PROFILES

LENGTH (m)	WEIGHT (Kg)
2	6.2
2.5	7.8
3	9.3
4	12.5



- » High Resistance, aluminium profile.
- » A curved base to allow both the pushing and pulling of the screed.
- » The twist system that allows for the change of direction is simply implemented into the handle.
- » Profiles available from 1.5m to 4m.

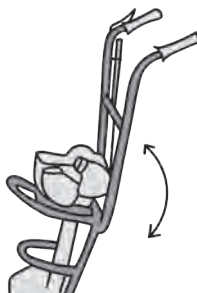


VIBRATING SCREED HURACAN

The Huracan from Enar is the perfect choice, in terms of quality and performance, for the most demanding jobs. The profiles used on the Huracan are resistant and glide comfortably across concrete due to its floatability.

Designed & Manufactured in Europe for Quality and Efficiency

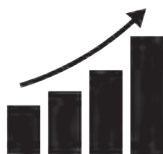
The Huracan is equipped with a powerful and reliable Honda GX35 petrol engine. The closed profile has been designed to work from 2m to 5m providing exceedingly high quality.



+ Ergonomic

Fold away handles.

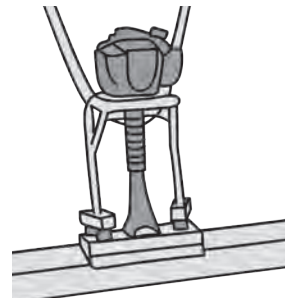
The Huracan has fold away handles for easy storage and transportation and they are isolated from vibration making the use of the product more comfortable for the user.



+ Performance

Two eccentrics instead of one.

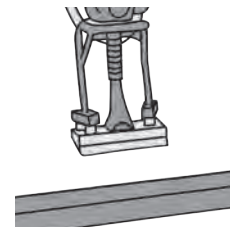
Two eccentrics joined together allow control of the eccentric force. 3 possible adaptations of the eccentrics allow the user to work to his own needs.



+ Durability

Elevated Motor for protection.

The motor attached to Huracan is elevated to avoid any water or concrete splashed damaging it, reducing the risk of damage and also keeping the motor clean.



+ Comfortable to Manage

Reliably simple.

Along with the fold away handles, the profile and the chassis are easily separated and put back together for easy, manageable set up and transportation. It takes up less storage space than a normal screed and is simple to set up.



TECHNICAL DATA

PETROL SCREEDS

MODEL	ENGINE	POWER (CV)	FUEL	FUEL TANK (L)	FREQUENCY (vib/min)	CENTRIFUGAL FORCE (N)	WEIGHT (Kg)
HURACAN H	HONDA GX35 4t/st	1.6	Gasoline	0.7	Up to 9,500	2,000	14.5

PROFILES

LENGTH (m)	WEIGHT (Kg)
2	8.2
3	12.6
4	16.8
5	21
4	12.5



- » High resistance, aluminium profiles.
- » Rounded ends to the profiles.
- » Strict flatness control while in use.
- » Symmetrical profile allows for a longer life span, as you can use both sides.
- » Profiles available from 2m to 5m.

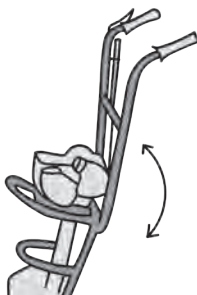


VIBRATING SCREED HURACAN L

The Huracan from Enar is the perfect choice, in terms of quality and performance, for the most demanding jobs. The profiles used on the Huracan are resistant and glide comfortably across concrete due to its floatability.

Designed & Manufactured in Europe for Quality and Efficiency

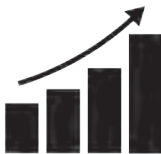
The Huracan is equipped with a powerful and reliable Honda GX35 petrol engine. The profile has been designed to work from 1.5m to 4m providing exceedingly high quality.



+ Ergonomic

Fold away handles.

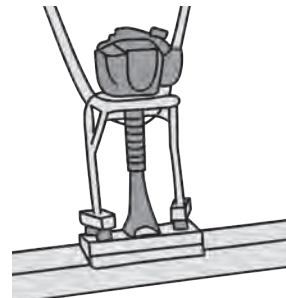
The Huracan has fold away handles for easy storage and transportation and they are isolated from vibration making the use of the product more comfortable for the user.



+ Performance

Two eccentrics instead of one.

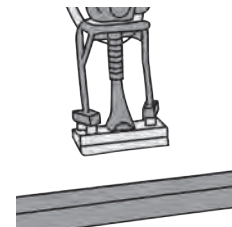
Two eccentrics joined together allow control of the eccentric force. 3 possible adaptations of the eccentrics allow the user to work to his own needs.



+ Durability

Elevated Motor for protection.

The motor attached to Huracan is elevated to avoid any water or concrete splashed damaging it reducing the risk of damage and also keeping the motor clean.



+ Comfortable to Manage

Reliably simple.

Along with the fold away handles, the profile and the chassis are easily separated and put back together for easy, manageable set up and transportation. It takes up less storage space than a normal screed and is simple to set up.



TECHNICAL DATA

PETROL SCREEDS

MODEL	ENGINE	POWER (CV)	FUEL	FUEL TANK (L)	FREQUENCY (vib/min)	CENTRIFUGAL FORCE (N)	WEIGHT (Kg)
HURACAN H	HONDA GX35 4t/st	1.6	Gasoline	0.7	Up to 9,500	2,000	14.5

PROFILES

LENGTH (m)	WEIGHT (Kg)
1.5	4.6
2	6.2
2.5	7.8
3	9.3
4	12.5



- » High resistance, aluminium profiles.
- » Rounded ends to the profiles.
- » Strict flatness control while in use.
- » Profile base of 200mm/20cm to obtain a greater control and glide.
- » Profiles available from 1.5m to 4m.

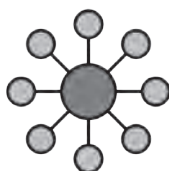


DOUBLE BEAM SCREED QP/QG

The Double Beam screeds from ENAR are available with both Electric and petrol motors. Additionally, ENAR offers both extendable and fixed screeds depending on the job at hand.

Designed and Manufactured in Europe for Assured Quality

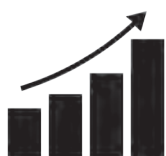
The screeds have been designed to last using quality control checks in the manufacturing process and also using sturdy materials. They were also designed for differing length surfaces. Screeds are manufactured using either steel for robustness or aluminium which is light and can be used with guides. The steel screeds come in sizes from 3.5m to 6m and the aluminium screeds from 2.5m to 4.5m.



+ Wide Selection

Many models, materials and motors.

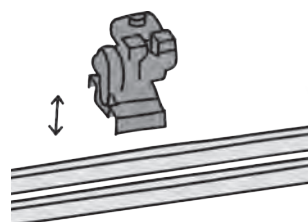
Gama completa de reglas adaptadas a cada cliente, motorización adecuada para todas necesidades.



+ High Performance

Consistent performance on every surface type.

Enar Double Beam screeds have been designed to work intensively on both wide surfaces while maintaining a quality and narrow finish.



+ Disassemble, Pack and Go

No time wasting! Easy to assemble/disassemble.

Despite its size, this piece of equipment is easy to put together and transport. It is very simple to attach the motor to the beam and just as simple to remove it, ready to be taken to the next job.



+ Power!

High vibrations & High Centrifugal Force.

The QP/QG beams have the capacity to vibrate up to a depth of 300mm due to their Weight (kg), Frequency (Vib/Min) and Centrifugal Force (N).



TECHNICAL DATA

DOUBLE BEAM SCREEDS- PETROL MOTOR

MODEL	ENGINE	POWER (CV)	FUEL	FUEL TANK (L)	FREQUENCY (vib/min)	CENTRIFUGAL FORCE (N)	WEIGHT (Kg)
QG H	HONDA GX160 4t/st	5.4	Gasoline	3.1	Up to 6,000	3,000	47.2



DOUBLE BEAM SCREEDS-ELECTRIC MOTOR

MODEL	ENGINE	POWER (W)	FREQUENCY (vib/min)	CENTRIFUGAL FORCE (N)	WEIGHT (Kg)
QP	EXTERNAL VIBRATOR 380V 3~	270	3,000	3,000	29.8
QP M	EXTERNAL VIBRATOR 230V 1~	250	3,000	3,000	30



EXTENDABLE DOUBLE BEAM PROFILES

TYPE	LENGTH (m)	WEIGHT (Kg)	DISTANCE BETWEEN PROFILES (mm)
Aluminum	2.5-4.5	30	270
Steel	2.5-4.5	48	270
Steel	3.5-6	64	270

FIXED DOUBLE BEAM PROFILES

TYPE	LENGTH (m)	WEIGHT (Kg)	DISTANCE BETWEEN PROFILES (mm)
Aluminum	2.7	15	270
Steel	3	24	270
Steel	4	32	270

- › The extendable screeds are adapted to the width of the surface without changing profiles.
- › They have been designed to work using levelling guides.
- › Each handle has a hook to attach aluminium rods, so that users can pull the beam in comfort.

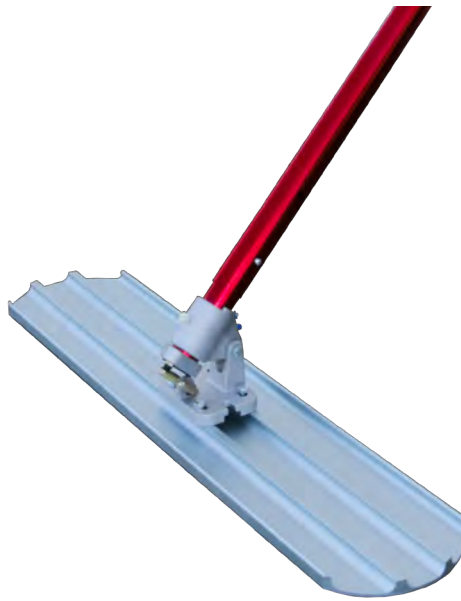


SURFACING BULL FLOATS

The bull floats have been designed to perfect the concrete after the use of a vibrating screed by eliminating any imperfections on the surface of the wet concrete.

On floors where concrete is not vibrated, but a professional finish is required, these bull floats provide the perfect result.

The ENAR bull floats are available in 0.9m, 1.2m and 1.8metres. The handle is also available as fixed or oscillating depending on the job at hand. The new aluminium handle is also interchangeable with both models and can be extended.



ALUMINIUM HANDLE



FIXED BULL FLOAT



OSCILLATING BULL FLOAT



TECHNICAL DATA

OSCILLATING BULL FLOAT

MODEL	LENGTH (m)	WEIGHT (kg)	PROFILE WIDTH (mm)
TRO 900 MG	0.9	4.6	205
TRO 1200 MG	1.2	5.8	205
TRO 1800 MG	1.8	7	205

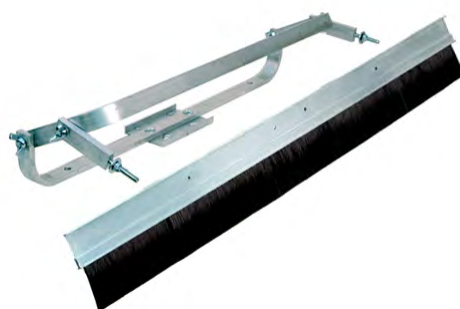
FIXED BULL FLOAT

MODEL	LENGTH (m)	WEIGHT (kg)	PROFILE WIDTH (mm)
TR 900 MG	0.9	4.4	205
TR 1200 MG	1.2	5.6	205
TR 1800 MG	1.8	6.8	205

ACCESSORIES

Brush kit for both oscillating and fixed bull floats

The brush can be installed for both fixed and oscillating bull floats. It allows the user to smooth and clean the concrete for a better finish.



MODEL	DESCRIPTION
BR AD	UNIVERSAL SUPPORT
B 900	BRUSH 0.9m
B 1200	BRUSH 1.2m
B 1800	BRUSH 1.8m



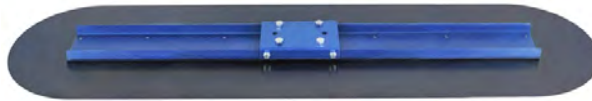
SURFACING TROWELS

The range of ENAR trowels allows the user to fill many needs depending on the job type. The trowels come as steel, magnesium, fixed, oscillating and also with the handle which is interchangeable and extendable. The lengths of these trowels range from 0.6m, 0.75m, 0.9m and 1.2m with a standard width of 1.2m for the magnesium Blue glider.

TROWEL



BLUE GLIDER



ALUMINIUM HANDLE



FIXED BULL TROWEL



OSCILLATING BULL TROWEL



TECHNICAL DATA

OSCILLANTING TROWELS

MODEL	LENGTH (m)	WEIGHT (kg)	PROFILE WIDTH (mm)
LRO 600 A	0.6	4.1	127
LRO 750 A	0.75	4.3	127
LRO 900 A	0.9	4.5	127
LRO 1200 A	1.2	6	127

FIXED TROWELS

MODEL	LENGTH (m)	WEIGHT (kg)	PROFILE WIDTH (mm)
LR 600 A	0.6	4.1	127
LR 750 A	0.75	4.3	127
LR 900 A	0.9	4.5	127
LR 1200 A	1.2	6	127

BLUE GLIDER

MODEL	LENGTH (m)	WEIGHT (kg)	PROFILE WIDTH (mm)
BG 1200	1.2	7.4	315

ACCESSORIES

EXTENDABLE HANDLE

A tool designed to spread and level the wet concrete. The handle and profile are both aluminium.

MODEL	LENGTH (mm)	WEIGHT (kg)
EAL 50	500x100	0.55



EXTENDABLE HANDLE

To increase the length of the handle for every type of paving tool offered by ENAR.

MODEL	LENGTH (m)	WEIGHT (kg)
ALUMINIUM HANDLE 1,8m	1.8	0.55



POWER TROWELS 600/900/1200

The wide range of power trowels from Enar is perfect for all the users' needs thanks to their differing sizes.

Designed Europe for Quality & Efficiency

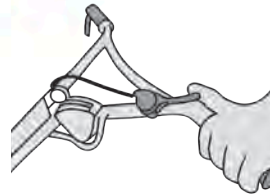
These power trowels were designed to provide coverage across varying floor sizes. This means they are offered as 600mm and 1200mm as easy to use power trowels. They all have adjustable handles, a dead man's switch and control of the height of the trowels for varying surface levels.



+ Eye Bolt

For lifting and transportation.

Every power trowel from Enar comes with an eye bolt allowing the user to lift the machinery and also allowing for easier transport.



+ Throttle

Comfortable to control.

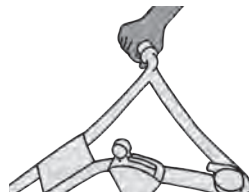
Each machine has a throttle to control the acceleration of the power trowel which is comfortably placed on the handle of the power trowel.



+ Adjustable Handles

Height for each user.

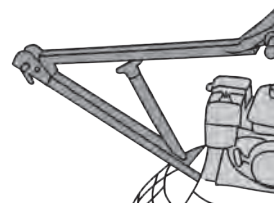
With the adjustable handle each user can freely move with the product without the stress as the trowel is at the preferred height.



+ Dead Man's Switch

Safety First.

The dead man's switch system is incorporated in each power trowel. This is the automatic disconnection of the power in the machine when the handle is released.



+ Foldable Handle

Storage made easy.

Designed to fold the handle in a position that makes transport and storage easier.



TECHNICAL DATA

MODEL	ENGINE	POWER (CV)	r.p.m.	DIAMETER (mm)	WEIGHT (Kg)
TIFON 600H	HONDA GX120	4	130	60	67
TIFON 600E	Electrical motor 230V 1~	2.2	130	60	71
TIFON 900HF	HONDA GX160	5.4	130	90	96
TIFON 900EF	Electrical motor 400V 3~	2.2-2.6 kw	130	90	94
TIFON 900HD	HONDA GX690	24	125	90	310
TIFON 1200HF	HONDA GX270	9	140	120	112



ACCESSORIES

- » Resting mat for the power trowel to protect the trowels.
- » Set of 4 trowels.
- » Tifon 900/1200: 4 set of combined trowels.



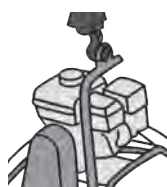
POWER TROWELS

601/901/1201

The wide range of power trowels from Enar is perfect for all the users' needs thanks to their differing sizes.

Designed Europe for Quality & Efficiency

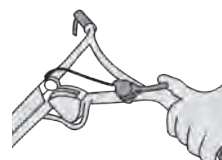
These power trowels were designed to provide coverage across varying floor sizes. This means they are offered as 600mm and 1200mm as easy to use power trowels. They all have adjustable handles, a dead man's switch and control of the height of the trowels for varying surface levels.



+ Eye Bolt

For lifting and transportation.

Every power trowel from Enar comes with an eye bolt allowing the user to lift the machinery and also allowing for easier transport.



+ Throttle

Comfortable to control.

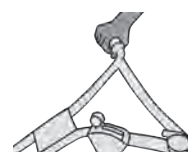
Each machine has a throttle to control the acceleration of the power trowel which is comfortably placed in the handle of the power trowel.



+ Adjustable Handles

Height for each user.

With the adjustable handle each user can freely move with the product without the stress as the trowel is at the preferred height.



+ Dead Man's Switch

Safety First.

The dead man's switch system is incorporated in each power trowel. This is the automatic disconnection of the power in the machine when the handle is released.



TECHNICAL DATA

MODEL	ENGINE	POWER (CV)	r.p.m.	DIAMETER (mm)	WEIGHT (Kg)
TIFON 601	HONDA GX160	5.5	120	600	52
TIFON 901	HONDA GX160	5.5	127	900	73
TIFON 1201	HONDA GX270	9	135	1200	104



ACCESSORIES

- » Resting mat for the power trowel to protect the trowels.
- » Set of 4 trowels.
- » Tifon 901/1201: 4 set of combined trowels.



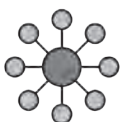
TAMPING RAMMERS DEEP

DEEP ENAR Series is easy to handle, reliable and easy to handle and transport.
They the best choice for works in trenches and narrow sites.

Variety and Efficiency

DEEP ENAR Series offers a range from 70 up to 90kg with different engine configuration and options according to the needs of each client.

The robust and ergonomic handle includes a set of wheels and makes it easy to load and unload in transportation.



+ Full range

A variety of models.

DEEP rammers come in a complete range of engines for the needs of each client.



+ Light foot

& strong.

The foot is light and wear resistant. It provides an optimal compaction of soil.



+ Air filter

3 stage.

DEEP ENAR rammers has a 3-stage filter that holds particles according to their size in a progressive way.



+ Comfort

In use.

Stroke is balanced for a better use of the equipment by user.



+ Economic

Cost saving.

DEEP ENAR range is designed for a low cost in maintenance. It has elements as a low cost spares.



TECHNICAL DATA

MODEL	WEIGHT WITHOUT FUEL (Kg)	JUMPING STROKE (mm)	IMPACT FORCE (Kg)	ENGINE	r.p.m.	POWER (cv)	OUTPUT (m²)	FUEL
PH 60H	64	60	1,300	HONDA GX100	4,000	3	190	Gasoline
PH 70E	70	70	1,540	HONDA GXR120RT KR EE	3,600	4	210	Gasoline
PH 70R	74	70	1,540	ROBIN EH 12 DU	3,600	4	210	Gasoline
PH 70LC	74	70	1,540	ENAR G165F	3,600	4	210	Gasoline
PH 80YD	81	70	1,510	YANMAR L 48 AE	3,600	4	205	Diesel

- » Dimensions: 770x398x1038 mm.
- » Foot dimensions: 332x280 mm.
- » Frequency: 700 r.p.m.
- » Tachymeter for recording operation hours and engine r.p.m as an option.
- » Saturation sensor for air filter as an option.



Single Direction Vibrating CompactorZEN

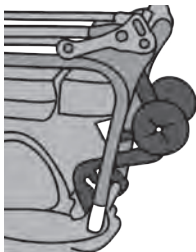
The ENAR ZEN single direction vibrating compactor Series are economical, easy to handle and can easily be transport.

The Enar Zen series are users' number one choice for compacting mixed soil in restricted areas, cohesive materials and paving stones.

Variety and Efficiency.

The Enar Zen Series offers a range up to 100kg with different engine configuration and options according to the needs of each client.

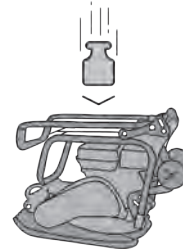
The Robust and ergonomic handle, the incorporation of wheels to the plate makes it easy to transport to any desired location on the construction site.



+ Transportation

easy.

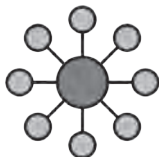
With the incorporation of a wheel set, we've made it easier than ever to transport vibrating plates at the construction site.



+ Robust

Resistant.

The base of the Enar Zen Series is made of high quality resistant cast iron to provide a long lasting operational life. It also comes with a heavy duty frame that protects the engine.



+ Full range

A variety of models.

The single direction vibrating compactor comes in a complete range of engines for the needs of each client.



+ Ergonomics

of use.

The handle is completely foldable on the compactor plate and it included as vibration absorption system to a higher comfort users.



TECHNICAL DATA

MODEL	WEIGHT WITHOUT FUEL (Kg)	CENTRIFUGAL FORCE (N)	SPEED (m/min)	DIMENSIONS (WidexLongxHigh)	ENGINE
ZEN 16CG	90	16,000	0-22	430X1165X958	HONDA GX 160 CE HONDA GX 160 ENAR G 160F ROBIN SUBARU EX17 CE
ZEN 16DG	94	16,000	0-22	500x1165x958	
ZEN 20CG	91	20,000	0-23	430x1165x958	
ZEN 20DG	95	20,000	0-23	500x1165x958	
ZEN 16CD	106	16,000	0-22	430X1165X958	HATZ 1B 20
ZEN 16DD	110	16,000	0-22	500X1165X958	
ZEN 20CD	107	20,000	0-23	430X1165X958	
ZEN 20DD	111	20,000	0-23	500X1165X958	

- » Vibration frequency : 5,600 vib/min.
- » Accelerator integrated in handle.
- » Centrifugal clutch driven and easy start.
- » Option of polyurethane sheet for the base plate, for works on paving stones.
- » Option of a 9-liter tank capacity is suitable for both asphalt works and dusty environment. It is easily removable for filling.



Single Direction Vibrating Compactor ZEN-E

The ENAR ZEN single direction vibrating compactor Series are an economical option without giving up a good performance.

The Enar Zen series are users' number one choice for compacting mixed soil in restricted areas, cohesive materials and paving stones.

Variety and Efficiency

The Enar Zen Series offers a range up to 100kg with different engine configuration and options according to the needs of each client.

The Robust and ergonomic handle, the incorporation of wheels to the plate makes it easy to transport to any desired location on the construction site.



+ Simplicity

of design.

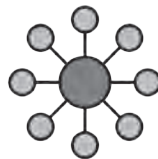
ZEN-E vibrating compactor is an economic version of the Zen Series without any change to compaction performance.



+ Resistant

plate base.

The base of the ZEN-E Vibrating compactor is made of high quality resistant cast iron to provide a long lasting operational life.



+ Full range

A variety of models.

The single direction vibrating compactor comes in a complete range of engines for the needs of each client.



TECHNICAL DATA

MODEL	WEIGHT WITHOUT FUEL (Kg)	CENTRIFUGAL FORCE (N)	SPEED (m/min)	DIMENSIONS (WidexLongxHigh)	ENGINE
ZEN 16CGE	82	16,000	0-22	430X952X890	HONDA GX 160 CE HONDA GX 160 ENAR G 160F ROBIN SUBARU EX17 CE
ZEN 16DGE	86	16,000	0-22	500X952X890	
ZEN 20CGE	83	20,000	0-23	430X952X890	
ZEN 20DGE	87	20,000	0-23	500X952X890	

- » Vibration frequency : 5,600 vib/min.
- » Centrifugal clutch driven and easy start.
- » Option of polyurethane sheet for the base plate, for works on paving stones.
- » Option of a 9-liter tank capacity is suitable for both asphalt works and dusty environment. It is easily removable for filling.



REVERSIBLE PLATE COMPACTORS CRENA

CRENA ENAR reversible plate compactors are robust, reliable and easy operating equipment.
They provide a high performance in jobs on granular soils.

VARIETY AND EFFICIENCY.

Plate compactors with a reversible drive from 150kg to 500kg. There is availability of different engines and other options according to the needs of each client.

Driving assembly makes operation easy.



+ Adaptability

For each work.

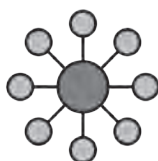
CRENA plate compactors allow adjustment to any work by means of a progressive drive.



+ Resistance

High.

CRENA ENAR range are plate compactors are the best in high requirement works.



+ Full range

Variety of models.

Full range of reversible plate compactor adapted to each client. Different engines can be selected for every need.



TECHNICAL DATA

MODEL	WEIGHT WITHOUT FUEL (Kg)	CENTRIFUGAL FORCE (N)	SPEED (m/min)	FREQUENCY (vib/min)	DIMENSIONS (WidthxLongxHigh)	ENGINE	FUEL	POWER (cv)
CRENA 26GH	160	26,000	0-22	5,700	450X700	HONDA GX200	Gasolina	5.5
CRENA 26DH	170	26,000	0-22	5,700	450x700	HAZT IB 20	Diesel	4.6
CRENA 32GH	210	32,000	0-22	5,400	500x750	HONDA GX200	Gasolina	5.5
CRENA 32DH	215	32,000	0-22	5,400	500x750	HAZT IB 20	Diesel	4.6
CRENA 52GH	330	52,000	0-22	4,500	600x859	HONDA GX 270	Gasolina	9
CRENA 63GH	430	63,000	0-20	4,200	750x900	HONDA iGX 440	Gasolina	12
CRENA 63DH	440	63,000	0-20	4,200	750x900	HAZT ID 50	Diesel	11
CRENA 63GHE*	430	63,000	0-23	4,200	750x900	HONDA iGX 440	Gasolina	12
CRENA 63 DHE*	460	63,000	0-23	4,200	750x900	HAZT ID 50	Diesel	11

- » Electric starter as an option.
- » Dead man system.
- » Superb maneuvering capacity.



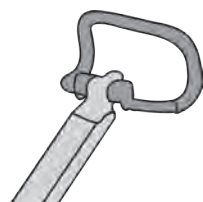
REVERSIBLE PLATE COMPACTORS TEN 25/30

TEN 25/30 reversible plate compactors are an excellent option for jobs on granular soils, due to its high performance.

VARIETY AND EFFICIENCY.

Plate compactors with a reversible drive from 100kg to 150kg. There is availability of different engines and other options according to the needs of each client.

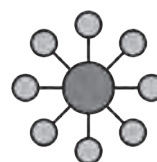
Driving assembly makes operation easy.



+ Ergonomics

Comfortable use.

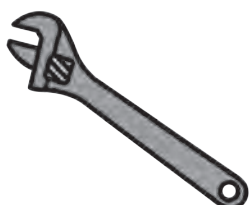
TEN 25/30 ENAR range is designed for an ergonomic work by user. The handle includes a shock-absorber device.



+ Full range

Variety of models.

Full range of reversible plate compactor adapted to each client. Different engines can be selected for every need.



+ Adaptability

For each work.

TEN 25/30 ENAR plate compactors allow adjustment to any work by means of a progressive drive.



+ Maintenance

easy.

TEN 25/30 ENAR range is designed for a low cost maintenance.



TECHNICAL DATA

MODEL	WEIGHT WITHOUT FUEL (Kg)	CENTRIFUGAL FORCE (N)	SPEED (m/min)	FREQUENCY (vib/min)	DIMENSIONS (WidthxLongxHigh)	ENGINE	FUEL	POWER (cv)
TEN 2540GR	134	24,500	0-22	5,400	400x1171	ROBIN EX17	Gasoline	5,7
TEN 2540GH	134	24,500	0-22	5,400	400x1171	HONDA GX160	Gasoline	5,4
TEN 2550GR	140	24,500	0-22	5,400	500x1171	ROBIN EX17	Gasoline	5,7
TEN 2550GH	140	24,500	0-22	5,400	500x1171	HONDA GX160	Gasoline	5,4
TEN 3040DH	148	29,500	0-20	5,300	500x1171	HATZ DIESEL 1B20	Diesel	4,6
TEN 3050DH	156	29,500	0-20	5,300	500x1171	HATZ DIESEL 1B20	Diesel	4,6

- » Optimal frequency and amplitude for compaction.
- » Dead man system.
- » Tensioning system for easy assembly of transmission band.
- » Light weigh for maneuvering and transportation.
- » Wheel set for transportation as an option.



REVERSIBLE PLATE COMPACTORS

TEN 35

TEN 35 reversible plate compactors are an excellent option for jobs on granular soils, due to its high performance.

VARIETY AND EFFICIENCY.

Plate compactors with a reversible drive from 150kg to 500kg. There is availability of different engines and other options according to the needs of each client.

Driving assembly makes operation easy.



+ Ergonomics

Comfortable use.

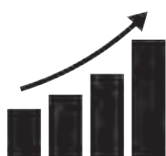
TEN 35 range is designed for an ergonomic work by user. The handle includes a shock-absorber device.



+ Noise level

low.

TEN 35 range produce a low noise level, improving user's comfort during operation.



+ High

performance.

TEN 35 plate compactors reach a high performance in cohesive and non-cohesive soils.



+ Robust

& resistant.

TEN 35 range is tested under the hardest work conditions.



TECHNICAL DATA

MODEL	WEIGHT WITHOUT FUEL (Kg)	CENTRIFUGAL FORCE (N)	SPEED (m/min)	FREQUENCY (vib/min)	DIMENSIONS (WidthxLongxHigh)	ENGINE	FUEL	POWER (cv)
TEN 35DH	215	35	0-22	5,400	90x55x110	HAZT IB 30	Diesel	7.4
TEN 35 DHEL	220	35	0-22	5,400	90x55x110	HAZT IB 30	Diesel	7.4
TEN 35GHEL	210	35	0-22	5,400	90x55x110	HONDA GX270	Gasoline	8.6
TEN 35GH	205	35	0-22	5,400	90x55x110	HONDA GX270	Gasoline	8.6
TEN 35DHT	215	35	0-22	5,400	90x55x110	HAZT 1B30	Diesel	9.1

- » Optimal frequency and amplitude for compaction.
- » Dead man system.
- » Tensioning system for easy assembly of transmission band.
- » Choice of different covers for protecting engine.
- » Engine oil easily drainable.
- » Engine selection for accomplishing even the highest demanding jobs.
- » Option of electric starter for both oil and Diesel engines.



DUPLEX HYDRAULIX ROLLERS REN

REN DUPLEX hydraulic rollers are an excellent choice for compaction jobs in granular filling, asphalt laying, foundations, layers and embankments.

VARIETY AND EFFICIENCY

REN range offers hydraulic rollers up to 600kg, with different engines and other options according to each user's needs.



+ Simply design.

REN range has a cost-saving design without giving up a high performance in compaction.



+ Sprinkler system.

REN range rollers have a water tank and distribution pipes for both rolling drums.



+ Safety for the user.

REN rollers keep user safer by their dead man system.



TECHNICAL DATA

MODEL	WEIGHT (Kg)	CENTRIFUGAL FORCE (kN)	SPEED (m/min)		POWER (kW)	ENGINE	FUEL	START	STOP
			Go ahead	Back					
REN 550 GH	550	12	0-5	0-2	4.8	HONDA GX 200	Gasoline	Manual	Electric
REN 600 DH	585	12	0-5	0-2	3.2	HAZT IB 20	Diesel	Electric	Manual

» Frequency: 60Hz.

» Water tank capacity: 45l.

» Access to narrow sites.

» Transmission system by chain.



HYDRAULIC ROLLERS REN

REN hydraulic rollers are an excellent choice for compaction jobs in granular filling, asphalt laying, foundations, layers and embankments.

VARIETY AND EFFICIENCY.

REN range offers hydraulic rollers up to 650kg, with different engines and other options according to each user's needs.



+ Robust

& resistant.

REN range rollers have a shock-proof structure to protect engine and provide a long life span.



+ Safety

for the user.

REN rollers keep user safer by their dead man system.



+ Maintenance

low.

Maintenance routines are few and easy because of a simple design.



+ Sprinkler

system.

REN range rollers have a water tank and distribution pipes for both rolling drums.



TECHNICAL DATA

MODEL	WEIGHT (Kg)	CENTRIFUGAL FORCE (kN)	SPEED (m/min)	POWER (kW)	ENGINE	START
REN 650 DK	640	10.8	0-3,5	4	KUBOTA E75NB3	Eléctrico

- » Frequency: 60Hz.
- » Water tank capacity: 45l.
- » Access to narrow sites.
- » Handle with shock absorbing system.
- » Transmission system by an independent hydraulic engine for each drum.



NOTES





ESPAÑA

ENARCO, S.A.

Plataforma Logística de Zaragoza , PLAZA C/ Burtina, 16
50197 ZARAGOZA (España/ Spain)

Tel: +34 976 464 090 / +34 976 464 091

Fax: +34 976 471 470

e-mail: comercial@enar.es

web: www.enar.es

Teléfono Servicio Asistencia Técnica: +34 976 464 094

Technical Assistance Phone: +34 976 464 091

FRANCIA

ENARFRANCE

ZAC du Perigord

2 Avenue du Perigord, Bureau n° 5
33370 POMPIGNAC (Francia/ France)

Tel: +33 (0)5 56 50 35 35

Fax: +33 (0)5 56 39 58 30

e-mail: enar@enarfrance.com

web: www.enarfrance.com

MÉXICO

MOPYCSA

Avda. F. Carrillo Pto n° 1001-2ª

El Benito Juárez

76120 QUERÉTARO Qro. (Mexico / Mexico)

Tel: +52 442 210 90 81

Fax: +52 442 217 69 42

e-mail: mopycsa@mopycsa.com.mx

web: www.mopycsa.com.mx

POLONIA

ENARPOL

Ul. Portowa, 22

30-709 KRAKÓW (Polonia/ Poland)

Tel: +48124189151

Fax: +48 12 418 9150

e-mail: biuro@enarpol.pl

web: www.enarpol.pl

CHINA

ENAR SHANGHAI

Building N° 4, N° 533 Yuanzhong Road,
Nanhui District.

201300 SHANGHAI (China/ China)

Tel: +86 21 33895190

Fax: +86 21 33895194

e-mail: enarshanghai@enarshanghai.com.cn

web: www.enarshanghai.com.cn

E.E.U.U

ENAR USA

ENAR USA

774 GA Highway 11 SW

Monroe, GA 30655

Tel: +1 770-266-5700

e-mail: enar@enar.us

web: www.enar.us

EN-1809

